

City of Los Angeles Bridge to Jobs and Targeted Local Hire Program Information

WLAC Career Center

Program Overview

TLH and BRIDGE are alternate pathways into City civil service positions, these programs were developed to remove barriers to civil service for historically underrepresented populations. They provide individuals with an *opportunity to be randomly selected for referral* to City departments in order to *participate in their hiring process and be considered* for entry-level or semi-skilled jobs. If hired as a City employee through the Program, candidates will have an initial 6 month on-the-job training period (full-time, paid, benefits), followed by a 6 month probationary period. Once the probationary period is successfully completed, the candidate is transitioned to full-time regular civil service employment.

Application Process

- ☐ Register for the Work Ready Program here:

<https://forms.office.com/r/zCU4zEyU5u>

This requirement may be waived if you already have a career portfolio. Please email wlac-careercenter@lacc.edu with your resume and cover letter.

- ☐ Receive a Referral form after completing a career portfolio
- ☐ Schedule an appointment at an Application Site where you will receive an orientation for the program and submit an application.
Bridge to Jobs candidates should make sure to bring a copy of their High School diploma or equivalent, or approved certification, to their Application Site session.
- ☐ If you're selected for referral to a City Department, you'll receive an email with further instructions and to schedule an interview.

You can schedule an appointment with the Career Center to help you prepare for an interview! Go to <https://www.collegecentral.com/wlac/> to make an appointment.

Target Local Hire Requirements

- Interest in one of the Targeted Local Hire career pathways below
- To be deemed "job ready" by one of the [TLH Program's Referral Agencies](#)
- Legal right to work in the U.S.
- In accordance with Los Angeles City Ordinance 187134, candidates must meet the minimum requirement of being fully vaccinated against COVID-19 or receive an exemption and report their vaccination status prior to being hired by the hiring City department. The ordinance is available at https://clkrep.lacity.org/online/docs/2021/21-0921_ord_187134_8-24-21.pdf
- *Additional requirements may apply*

Bridge to Jobs Requirements

- Interest in one of the Bridge to Jobs career pathways below
- To be deemed "job ready" by one of the [BRIDGE Program's Referral Agencies](#)
- Legal right to work in the U.S.
- Proof of one (1) of the following four (4) requirements:
 - Graduation from a U.S. high school, G.E.D. or equivalent from a U.S. institution
 - Approved Certification
 - Passing score on the CASAS test

- Passing score on the City's Aptitude test
- In accordance with Los Angeles City Ordinance 187134, candidates must meet the minimum requirement of being fully vaccinated against COVID-19 or receive an exemption and report their vaccination status prior to being hired by the hiring City department. The ordinance is available at https://clkrep.lacity.org/online/docs/2021/21-0921_ord_187134_8-24-21.pdf
- *Additional requirements may apply*

Target Populations for Both Programs

Though anyone may apply, the programs seek to target and recruit individuals from the vulnerable and underserved populations below:

TARGETED POPULATIONS



Veterans



PERSONS
with
Disabilities



Transgender
Individuals



Older Workers
protected under the
Age Discrimination
in Employment Act
of 1967



Disconnected
Youth,
Foster Youth,
Transition Age
Youth



Former Gang
Members
including those
affected by the
City's Rodriguez
settlement



Unhoused
and Formerly
Unhoused



Designated
ZIP Codes
including those
with limited but
sufficient English
proficiency



Formerly
Incarcerated
including those on
parole or probation

Pay and Benefits Information

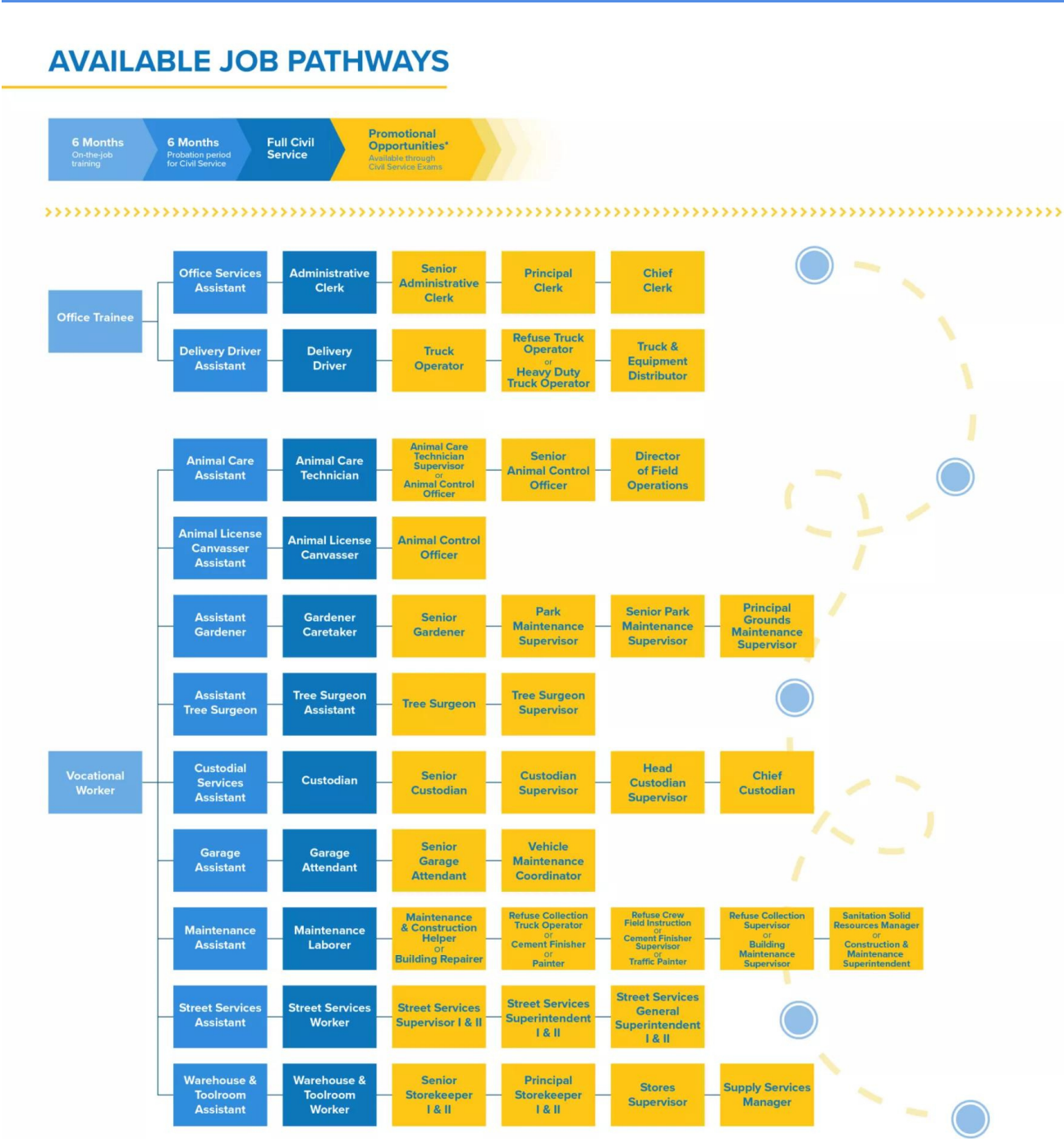
TLH - Initial hire is to a *Vocational Worker* or *Office Trainee* position, which offers:

- Full-time employment
- At least \$15.00 an hour
- Benefits (health, retirement, and commute options)
- On the job training & development

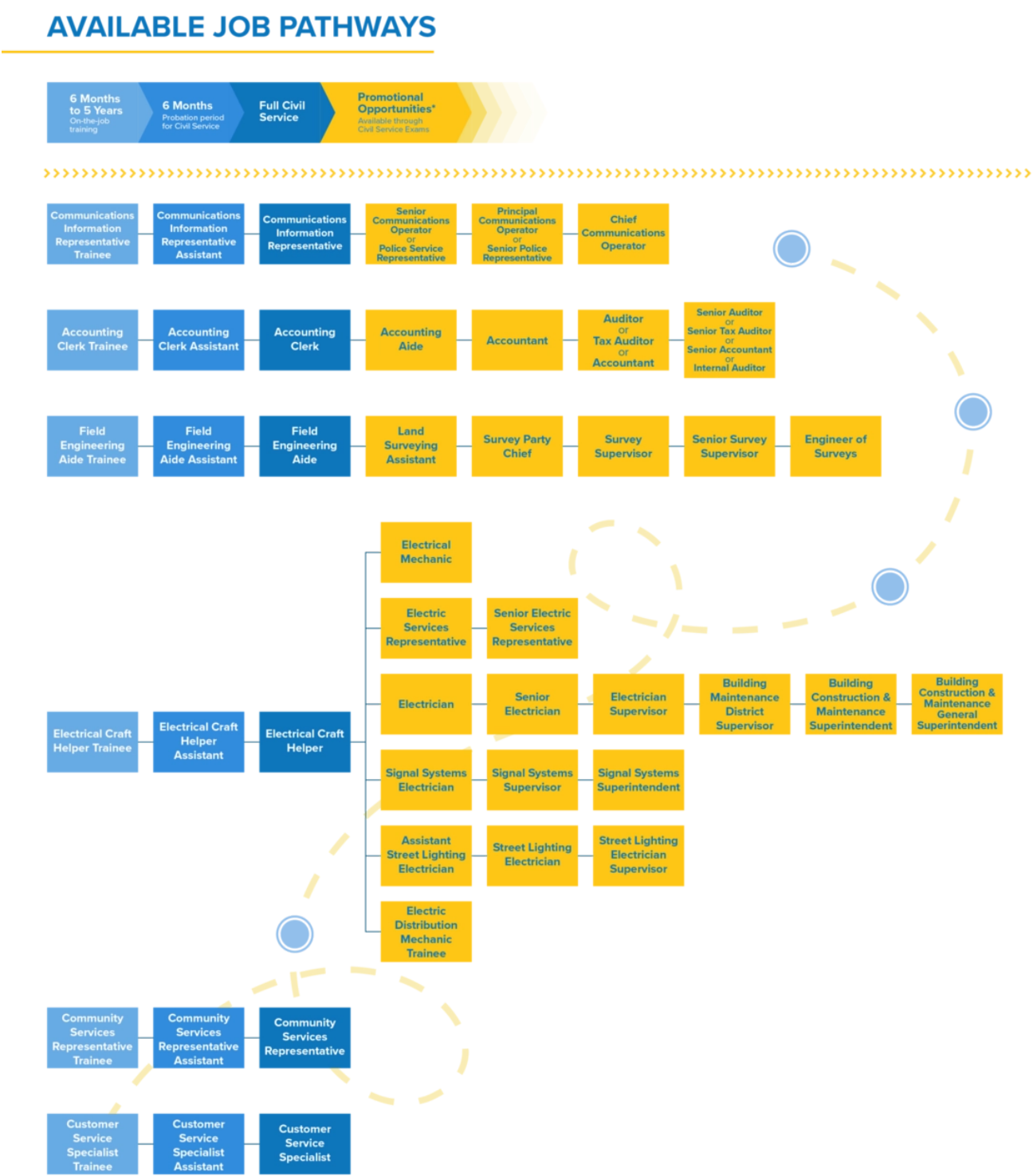
BRIDGE - Initial hire to any of these positions offers:

- Full-time employment
- At least \$19.00 an hour
- Benefits (health, retirement, and commute options)
- On the job training & development

Targeted Local Hire Available Pathways



Bridge to Jobs Available Pathways





Questions?

Email us at wlac-careercenter@laccd.edu with your question and we'll be happy to help you!