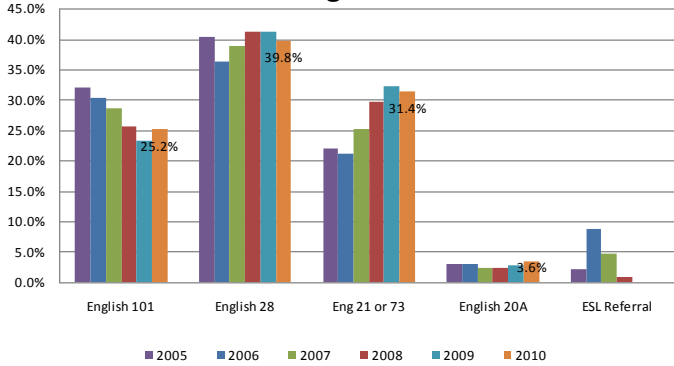
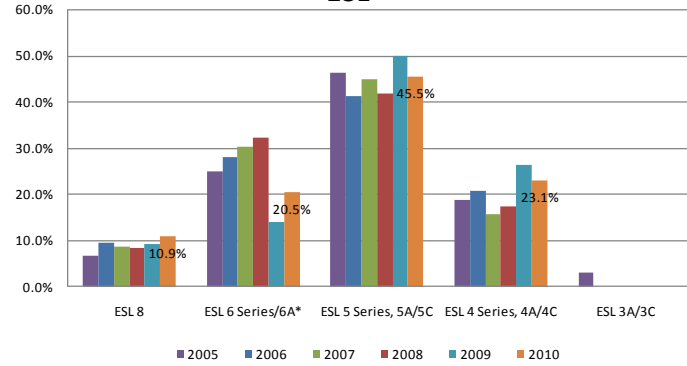


Assessment and Placement Summary Math, English, and ESL 2005-2010

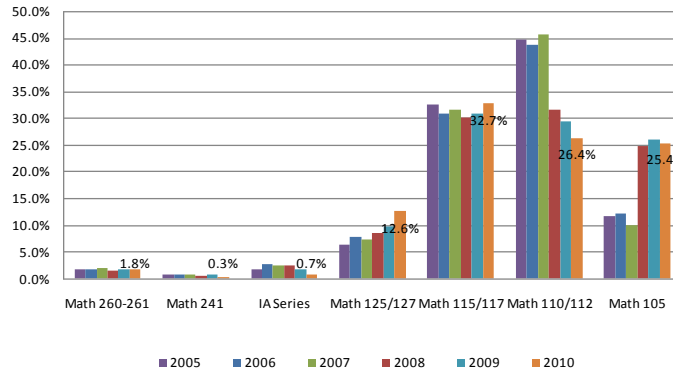
English



ESL



Math



		MATH PLACEMENT															
Course Level	Recommended Placement	2003		2004		2005		2006		2007		2008		2009		2010	
College Level	Math 260-261	39	1.6%	44	2.0%	44	1.9%	39	1.8%	54	2.0%	44	1.5%	51	1.7%	50	1.8%
College Level	Math 241	19	0.8%	25	1.2%	20	0.9%	17	0.8%	23	0.9%	17	0.6%	21	0.7%	9	0.3%
Pre-College Level	IA Series	69	2.8%	59	2.7%	44	1.9%	60	2.8%	63	2.4%	75	2.5%	49	1.7%	21	0.7%
Pre-College Level	Math 125/127	164	6.7%	137	6.3%	148	6.3%	168	7.7%	192	7.3%	260	8.6%	287	9.7%	360	12.6%
Pre-College Level	Math 115/117	759	31.1%	688	31.8%	763	32.6%	672	30.9%	836	31.6%	914	30.3%	916	30.9%	933	32.7%
Basic Skills	Math 110/112	1,090	44.6%	957	44.2%	1,046	44.7%	955	43.9%	1,207	45.7%	954	31.6%	872	29.4%	752	26.4%
Basic Skills	Math 105	304	12.4%	255	11.8%	277	11.8%	265	12.2%	267	10.1%	752	24.9%	771	26.0%	725	25.4%
Total		2,444	100%	2,165	100%	2,342	100%	2,176	100%	2,642	100%	3,016	100%	2,967	100%	2,850	100%
		ENGLISH PLACEMENT															
Course Level	Recommended Placement	2003		2004		2005		2006		2007		2008		2009		2010	
College Level	English 101	637	25.7%	511	25.3%	612	32.2%	583	30.3%	652	28.7%	689	25.6%	606	23.4%	653	25.2%
Pre-College Level	English 28	984	39.6%	808	40.0%	770	40.5%	700	36.3%	884	38.9%	1,114	41.3%	1,068	41.3%	1,032	39.8%
Basic Skills	Eng 21 or 73	780	31.4%	639	31.6%	419	22.1%	411	21.3%	574	25.3%	803	29.8%	840	32.4%	814	31.4%
Basic Skills	English 20A	82	3.3%	64	3.2%	58	3.1%	60	3.1%	53	2.3%	64	2.4%	75	2.9%	92	3.6%
Basic Skills	ESL Referral					41	2.2%	172	8.9%	109	4.8%	26	1.0%				
Total		2,483	100%	2,022	100%	1,900	100%	1,926	100%	2,272	100%	2,696	100%	2,589	100%	2,591	100%
		ESL PLACEMENT															
Course Level	Recommended Placement	2003		2004		2005		2006		2007		2008		2009		2010	
ESL	ESL 8					27	6.8%	40	9.7%	40	8.7%	22	8.4%	16	9.4%	17	10.9%
ESL	ESL 6 Series/6A*	67	25.5%	50	24.6%	99	25.1%	116	28.2%	140	30.4%	85	32.3%	24	14.1%	32	20.5%
ESL	ESL 5 Series, 5A/5C	116	44.1%	102	50.2%	183	46.3%	170	41.3%	208	45.1%	110	41.8%	85	50.0%	71	45.5%
ESL	ESL 4 Series, 4A/4C	67	25.5%	42	20.7%	74	18.7%	86	20.9%	73	15.8%	46	17.5%	45	26.5%	36	23.1%
ESL	ESL 3A/3C	13	4.9%	9	4.4%	12	3.0%										
Total		263	100%	203	100%	395	100%	412	100%	461	100%	263	100%	170	100%	156	100%

Source: The Los Angeles Community College District Student Information System (SIS)