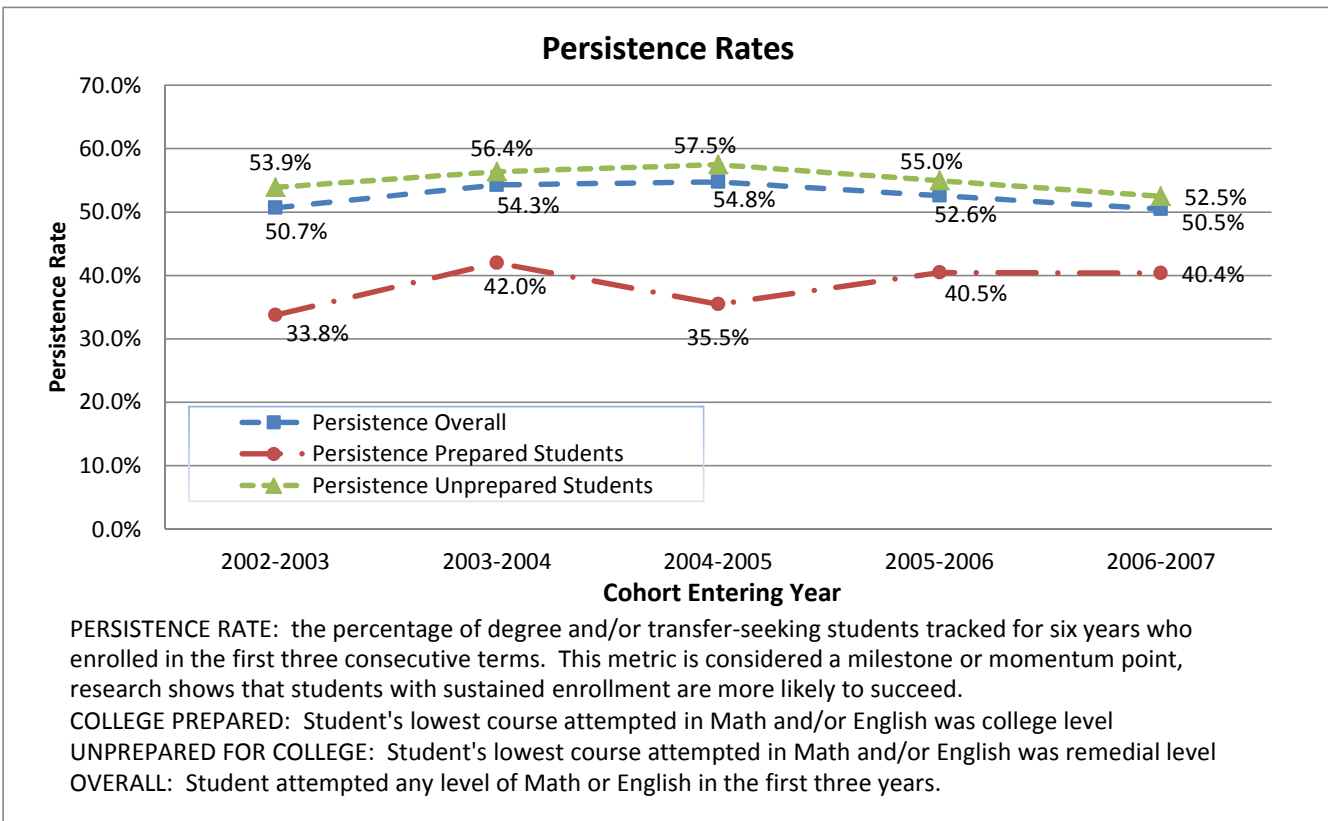
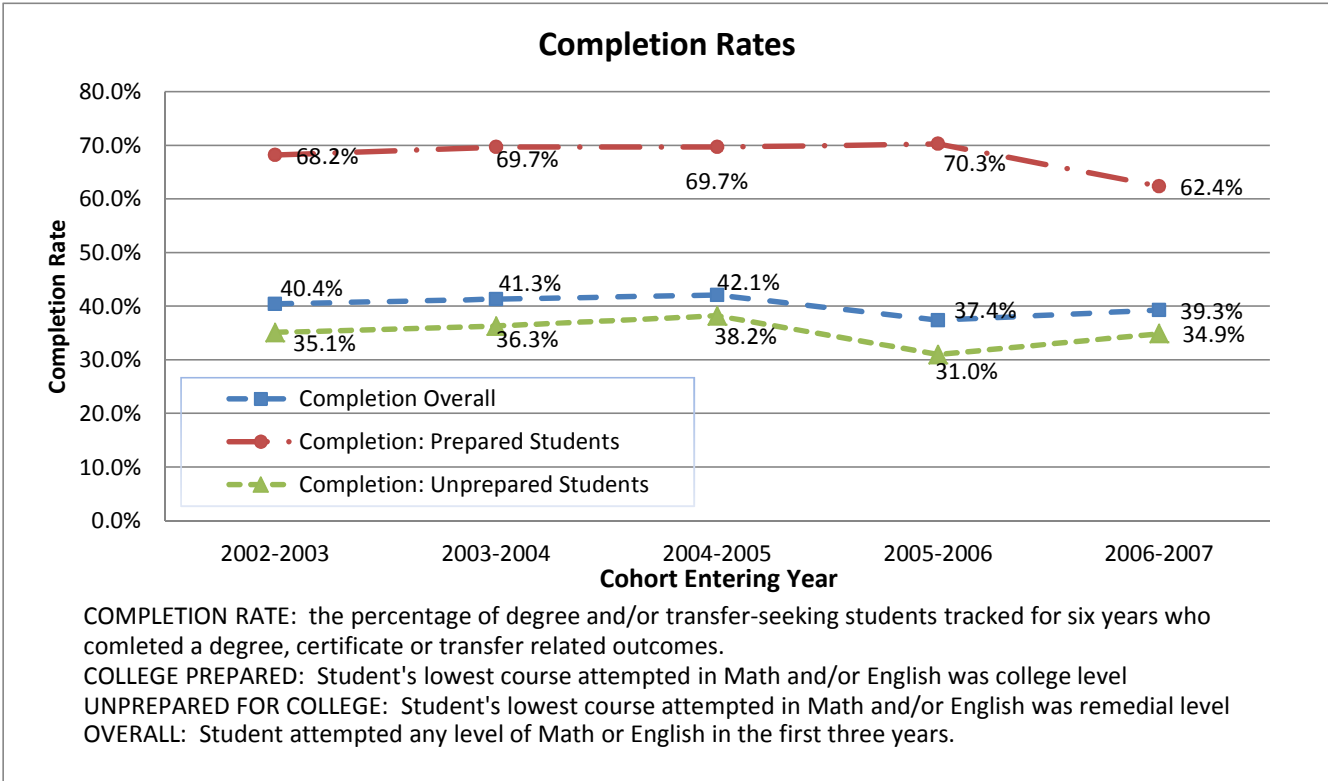
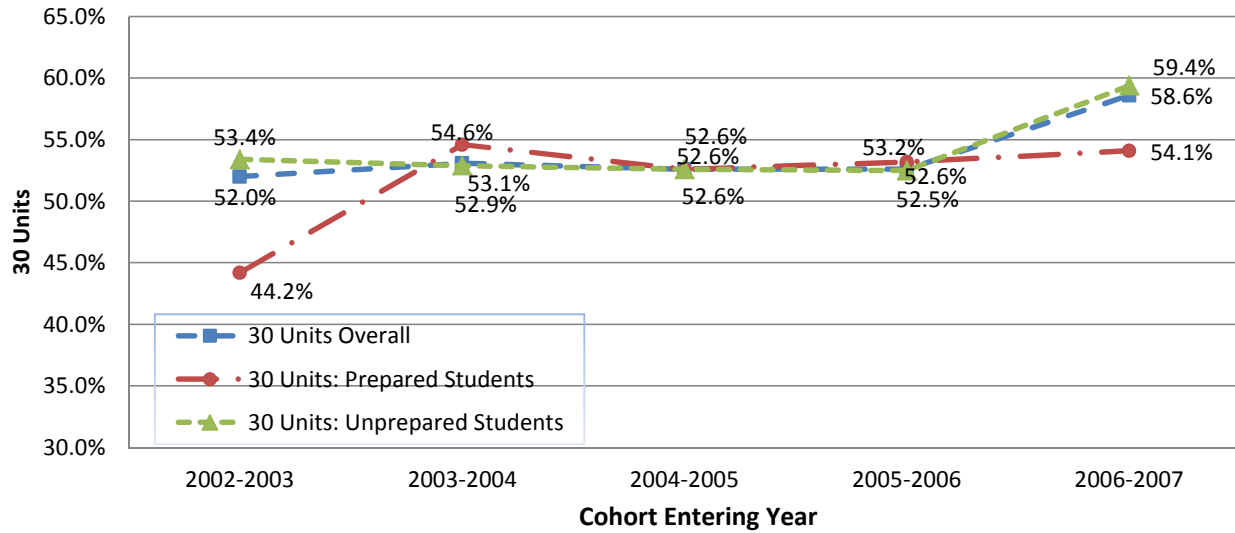


## West Los Angeles College 2013 Student Success Scorecard: Five Year Trends



### 30 Units



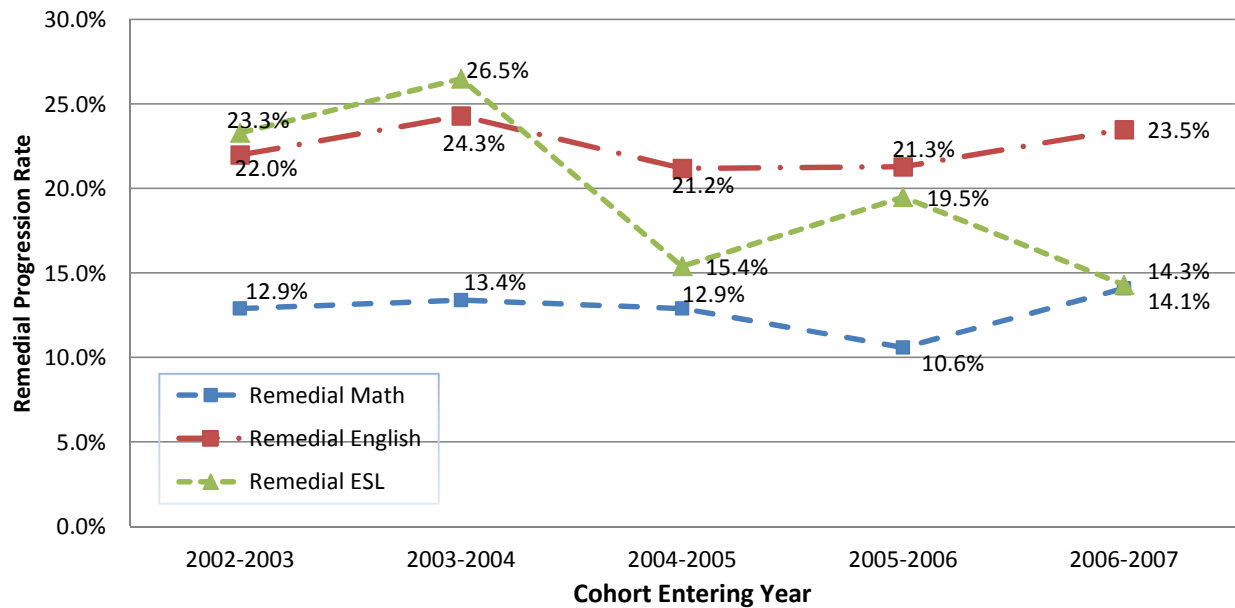
30 UNITS: the percentage of degree and/or transfer-seeking students tracked for six years who achieved at least 30 units. Credit accumulation, 30 units specifically, tends to be positively correlated with completion and wage gain.

COLLEGE PREPARED: Student's lowest course attempted in Math and/or English was college level

UNPREPARED FOR COLLEGE: Student's lowest course attempted in Math and/or English was remedial level

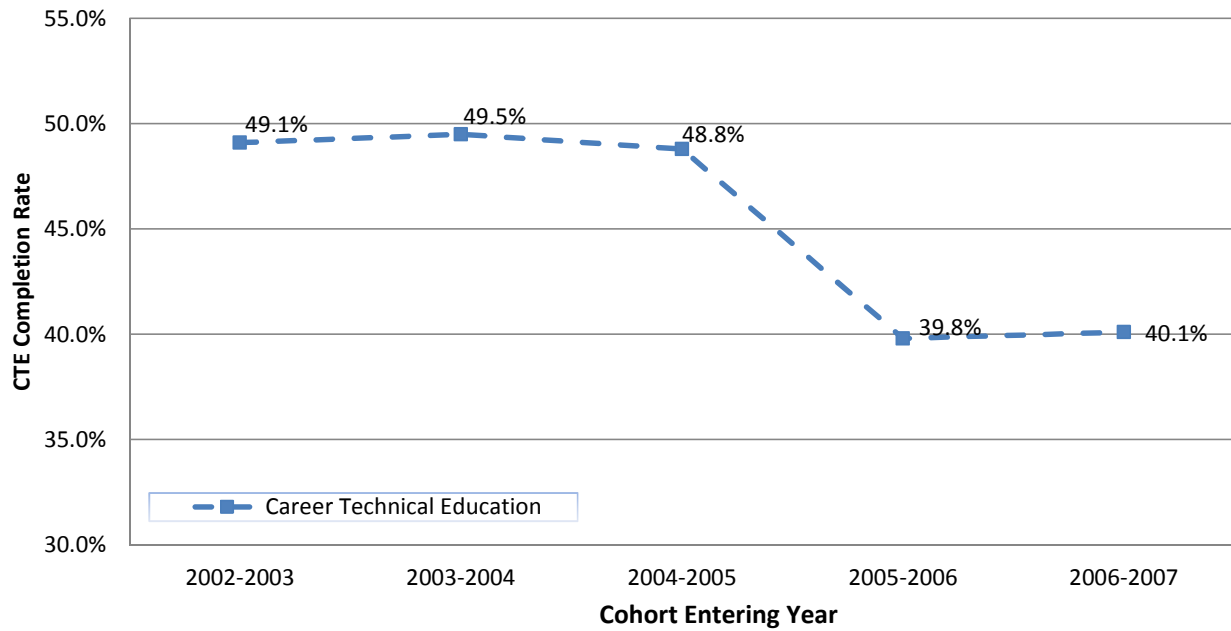
OVERALL: Student attempted any level of Math or English in the first three years.

### Remedial Progression



REMEDIAL PROGRESSION RATE: the percentage of credit students tracked for six years who started below transfer level in English, mathematics, and/or ESL and completed a college-level course in the same discipline.

### Career Technical Education Completion



CTE COMPLETION RATE: the percentage of students tracked for six years who completed several courses classified as career technical education (or vocational) in a single discipline and completed a degree, certificate or transferred.

Cohort Sizes					
Student Success Metric	Entering Year				
	2002-2003	2003-2004	2004-2005	2005-2006	2006-2007
<b>Completion/ Persistence/ 30 Units</b>					
Overall	966	796	608	682	671
Prepared Students	154	119	76	111	109
Unprepared Students	812	677	532	571	562
<b>Remedial English</b>	902	838	699	639	510
<b>Remedial Math</b>	989	1,131	910	772	746
<b>Remedial ESL</b>	60	49	39	77	28
<b>Career Technical Education</b>	962	822	687	1,258	1,213