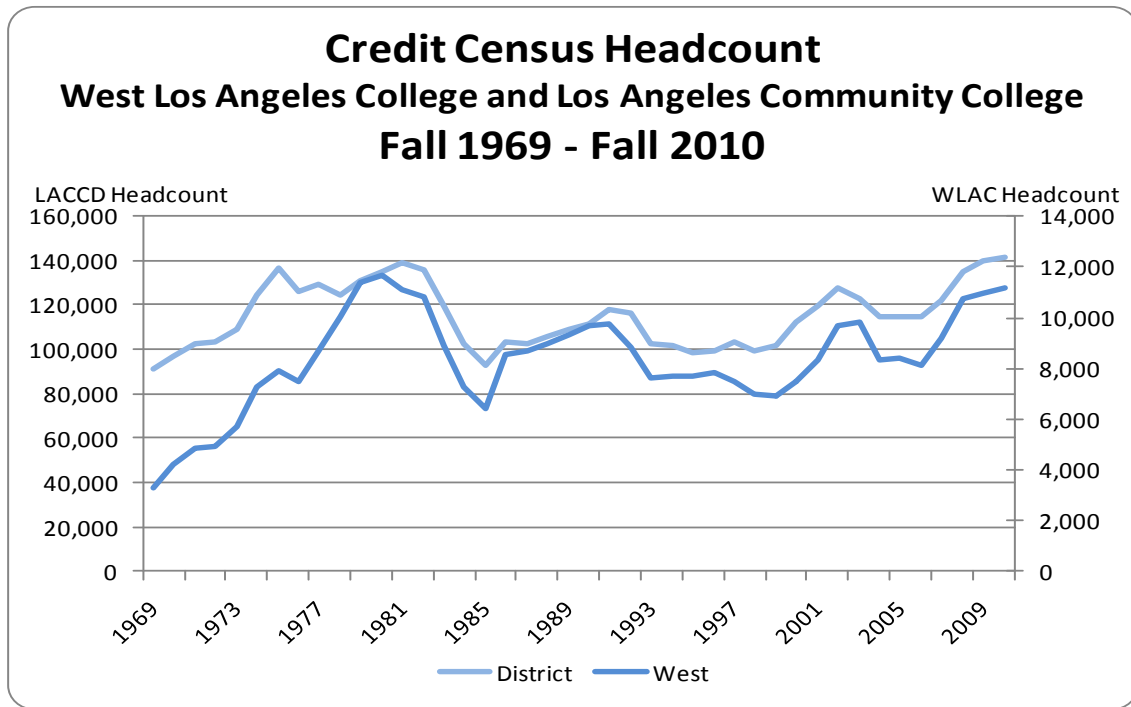


Fall	# of Students	% Chg	Fall	# of Students	% Chg
1969	3,282		1990	9,677	3.6%
1970	4,239	29.2%	1991	9,768	0.9%
1971	4,832	14.0%	1992	8,852	-9.4%
1972	4,954	2.5%	1993	7,617	-14.0%
1973	5,700	15.1%	1994	7,716	1.3%
1974	7,240	27.0%	1995	7,727	0.1%
1975	7,893	9.0%	1996	7,869	1.8%
1976	7,483	-5.2%	1997	7,466	-5.1%
1977	8,712	16.4%	1998	6,955	-6.8%
1978	10,041	15.3%	1999	6,927	-0.4%
1979	11,407	13.6%	2000	7,499	8.3%
1980	11,640	2.0%	2001	8,313	10.9%
1981	11,085	-4.8%	2002	9,718	16.9%
1982	10,825	-2.3%	2003	9,804	0.9%
1983	8,921	-17.6%	2004	8,305	-15.3%
1984	7,268	-18.5%	2005	8,390	1.0%
1985	6,436	-11.4%	2006	8,088	-3.6%
1986	8,553	32.9%	2007	9,216	13.9%
1987	8,682	1.5%	2008	10,780	17.0%
1988	9,003	3.7%	2009	10,932	1.4%
1989	9,341	3.8%	2010	11,140	1.9%

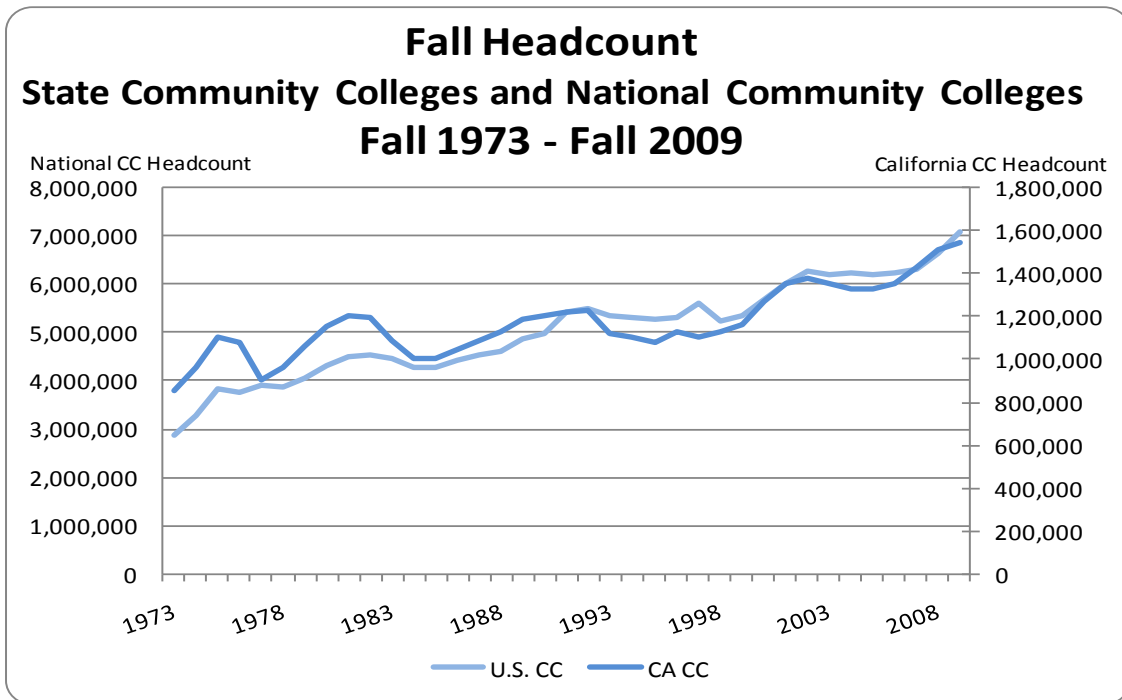
*Note: Headcount is the number of individual students (unduplicated).*

*Source: The Los Angeles Community College District Office Student Information System (SIS).*



Fall	West	District	Fall	West	District	Fall	West	District
1969	3,282	91,469	1983	8,921	119,569	1997	7,466	103,251
1970	4,239	97,176	1984	7,268	102,313	1998	6,955	99,165
1971	4,832	102,256	1985	6,436	93,026	1999	6,927	102,075
1972	4,954	103,456	1986	8,553	103,336	2000	7,499	112,155
1973	5,700	108,922	1987	8,682	102,912	2001	8,313	119,433
1974	7,240	124,839	1988	9,003	105,678	2002	9,718	128,013
1975	7,893	137,031	1989	9,341	108,880	2003	9,804	122,441
1976	7,483	126,143	1990	9,677	111,485	2004	8,305	114,681
1977	8,712	129,296	1991	9,768	117,994	2005	8,390	114,701
1978	10,041	124,523	1992	8,852	116,251	2006	8,088	114,777
1979	11,407	130,896	1993	7,617	102,800	2007	9,216	122,060
1980	11,640	134,622	1994	7,716	101,378	2008	10,780	135,103
1981	11,085	139,168	1995	7,727	98,104	2009	10,932	139,990
1982	10,825	135,644	1996	7,869	99,654	2010	11,140	141,586

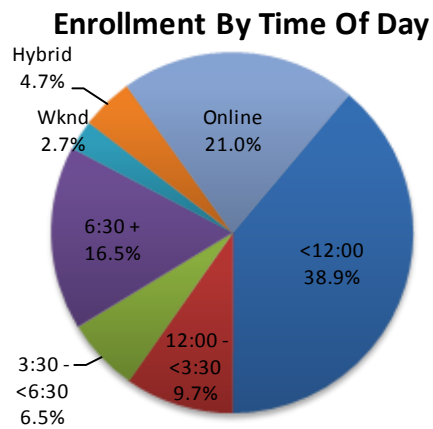
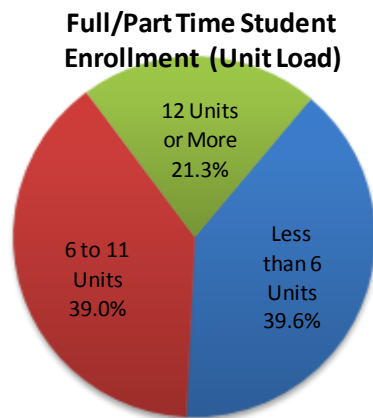
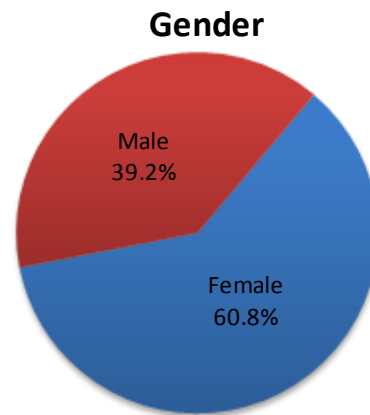
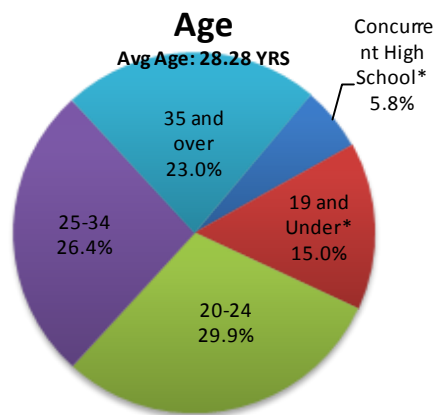
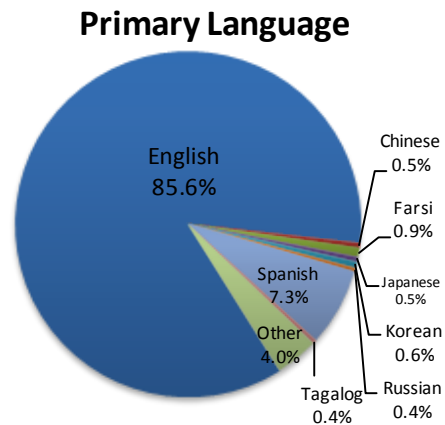
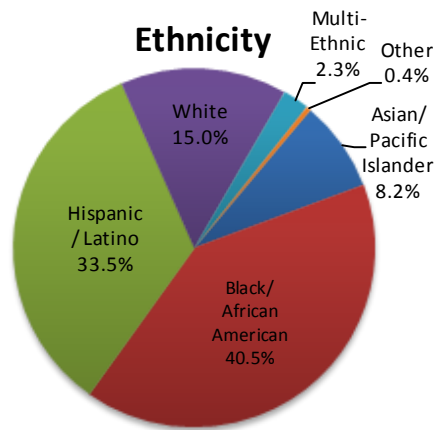
**Note:** Headcount is the number of individual students (unduplicated).  
**Source:** The Los Angeles Community College District Office Student Information System (SIS).



Fall	CA CC	U.S. CC	Fall	CA CC	U.S. CC
1973	852,900	2,889,621	1992	1,228,515	5,485,484
1974	959,700	3,285,482	1993	1,117,058	5,337,328
1975	1,104,000	3,836,366	1994	1,102,212	5,308,366
1976	1,074,700	3,751,786	1995	1,076,752	5,272,056
1977	906,522	3,901,769	1996	1,127,843	5,314,463
1978	958,409	3,873,690	1997	1,104,163	5,605,569
1979	1,065,346	4,056,810	1998	1,125,172	5,245,963
1980	1,154,896	4,328,782	1999	1,161,370	5,339,449
1981	1,202,682	4,480,708	2000	1,269,706	5,697,388
1982	1,191,366	4,519,653	2001	1,351,027	5,996,701
1983	1,087,425	4,459,330	2002	1,377,198	6,270,380
1984	1,005,576	4,279,097	2003	1,355,853	6,207,618
1985	1,006,686	4,269,733	2004	1,332,253	6,243,576
1986	1,046,099	4,414,129	2005	1,326,995	6,184,229
1987	1,089,011	4,541,054	2006	1,350,492	6,225,120
1988	1,124,498	4,615,487	2007	1,424,938	6,324,119
1989	1,184,861	4,883,660	2008	1,514,867	6,640,344
1990	1,205,565	4,996,471	2009	1,542,644	7,101,445
1991	1,218,614	5,404,815	2010	*	*

Sources: California Postsecondary Education Commission (CPEC): [www.cpec.ca.gov/OnLineData/OnLineData.asp](http://www.cpec.ca.gov/OnLineData/OnLineData.asp)  
 National Center for Educational Statistics (NCES): [nces.ed.gov/programs/digest/d10/tables/dt10\\_198.asp](http://nces.ed.gov/programs/digest/d10/tables/dt10_198.asp)  
 Fall 2010 not available at time of report.

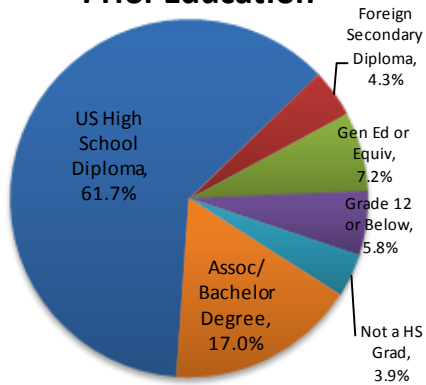
### Fall 2010 Headcount 11,140



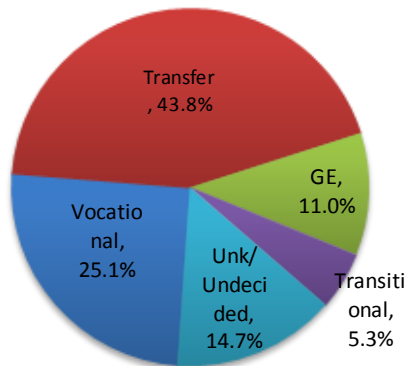
Source: The Los Angeles Community College District Student Information System (SIS)

**Fall 2010**  
Headcount 11,140

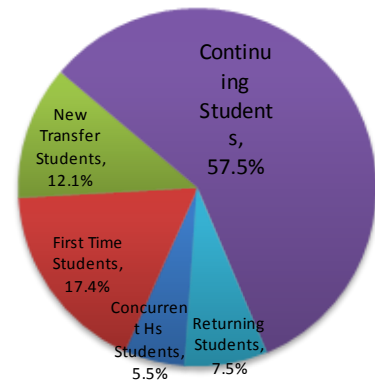
**Prior Education**



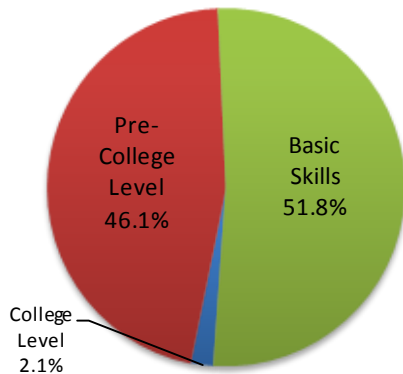
**Educational Goal**



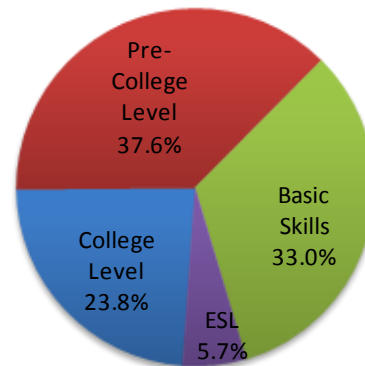
**Entering Status**



**Math Placement Level**

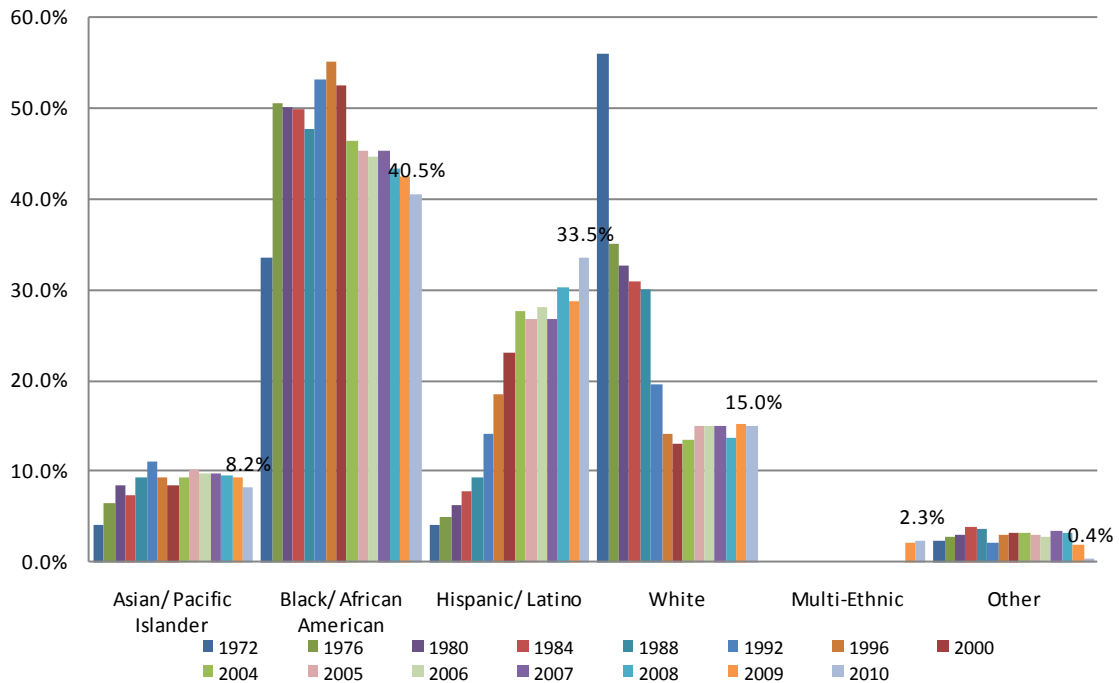


**English/ESL Placement Level**



Source: The Los Angeles Community College District Student Information System (SIS)

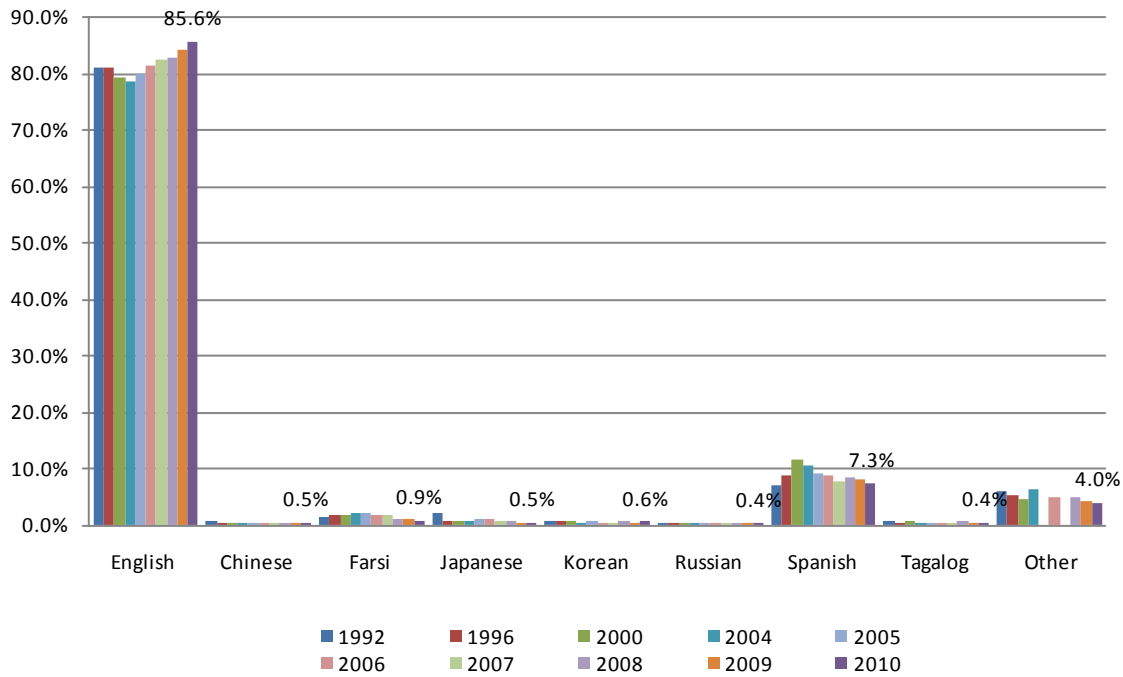
### Ethnicity Distribution



	Asian/ Pacific Islander		Black/ African American		Hispanic/ Latino		White		Multi-Ethnic		Other		Total
1972	198	4.0%	1,660	33.5%	203	4.1%	2,779	56.1%			114	2.3%	4,954
1973	232	4.1%	2,282	40.0%	245	4.3%	2,819	49.5%			121	2.1%	5,700
1974	394	5.4%	3,098	42.8%	332	4.6%	3,250	44.9%			166	2.3%	7,240
1975	447	5.7%	3,591	45.5%	388	4.9%	3,254	41.2%			213	2.7%	7,893
1976	485	6.5%	3,784	50.6%	370	4.9%	2,629	35.1%			214	2.9%	7,483
1977	558	6.4%	4,768	54.7%	440	5.1%	2,761	31.7%			185	2.1%	8,712
1978	792	7.9%	4,748	47.3%	571	5.7%	3,680	36.7%			250	2.5%	10,041
1979	939	8.2%	5,401	47.4%	738	6.5%	4,001	35.1%			327	2.9%	11,407
1980	969	8.3%	5,825	50.0%	720	6.2%	3,791	32.6%			335	2.9%	11,640
1981	828	7.5%	5,474	49.4%	703	6.3%	3,738	33.7%			343	3.1%	11,085
1982	821	7.6%	5,628	52.0%	641	5.9%	3,387	31.3%			347	3.2%	10,825
1983	679	7.6%	4,655	52.2%	584	6.5%	2,693	30.2%			310	3.5%	8,921
1984	536	7.4%	3,636	50.0%	572	7.9%	2,247	30.9%			277	3.8%	7,268
1985	539	8.4%	3,221	50.0%	491	7.6%	1,962	30.5%			223	3.5%	6,436
1986	772	9.0%	4,159	48.6%	707	8.3%	2,610	30.5%			304	3.6%	8,553
1987	802	9.2%	4,238	48.8%	698	8.0%	2,635	30.3%			308	3.6%	8,682
1988	845	9.4%	4,295	47.7%	839	9.3%	2,700	30.0%			325	3.6%	9,003
1989	976	10.4%	4,484	48.0%	983	10.5%	2,529	27.1%			368	3.9%	9,341
1990	1,008	10.4%	4,851	50.1%	1,209	12.5%	2,336	24.1%			273	2.8%	9,677
1991	1,071	11.0%	5,076	52.0%	1,368	14.0%	2,034	20.8%			219	2.2%	9,768
1992	974	11.0%	4,699	53.1%	1,253	14.2%	1,731	19.6%			194	2.2%	8,852
1993	808	10.6%	4,092	53.7%	1,188	15.6%	1,321	17.3%			208	2.7%	7,617
1994	788	10.2%	4,227	54.8%	1,249	16.2%	1,255	16.3%			198	2.6%	7,716
1995	739	9.6%	4,303	55.7%	1,289	16.7%	1,201	15.5%			195	2.5%	7,727
1996	725	9.2%	4,345	55.2%	1,453	18.5%	1,113	14.1%			233	3.0%	7,869
1997	724	9.7%	4,138	55.4%	1,386	18.6%	1,037	13.9%			181	2.4%	7,466
1998	662	9.5%	3,852	55.4%	1,370	19.7%	894	12.9%			177	2.5%	6,955
1999	693	10.0%	3,753	54.2%	1,393	20.1%	882	12.7%			207	3.0%	6,927
2000	625	8.3%	3,938	52.5%	1,721	23.0%	977	13.0%			237	3.2%	7,499
2001	757	9.1%	3,967	47.7%	2,121	25.5%	1,175	14.1%			293	3.5%	8,313
2002	912	9.4%	4,724	48.6%	2,351	24.2%	1,432	14.7%			300	3.1%	9,718
2003	985	10.0%	4,537	46.3%	2,497	25.5%	1,481	15.1%			304	3.1%	9,804
2004	779	9.4%	3,855	46.4%	2,297	27.7%	1,117	13.4%			258	3.1%	8,305
2005	851	10.1%	3,804	45.3%	2,241	26.7%	1,252	14.9%			242	2.9%	8,390
2006	786	9.7%	3,607	44.6%	2,268	28.0%	1,206	14.9%			221	2.7%	8,088
2007	889	9.6%	4,178	45.3%	2,459	26.7%	1,375	14.9%			314	3.4%	9,216
2008	1,015	9.4%	4,682	43.4%	3,264	30.3%	1,477	13.7%			342	3.2%	10,780
2009	916	9.4%	4,133	42.5%	2,794	28.7%	1,492	15.3%	207	2.1%	184	1.9%	9,726
2010	833	8.2%	4,112	40.5%	3,395	33.5%	1,521	15.0%	238	2.3%	42	0.4%	10,141

**Note:** Totals exclude unknowns. The question about Ethnicity was modified starting Fall 2009.  
**Source:** The Los Angeles Community College District Office Student Information System (SIS).

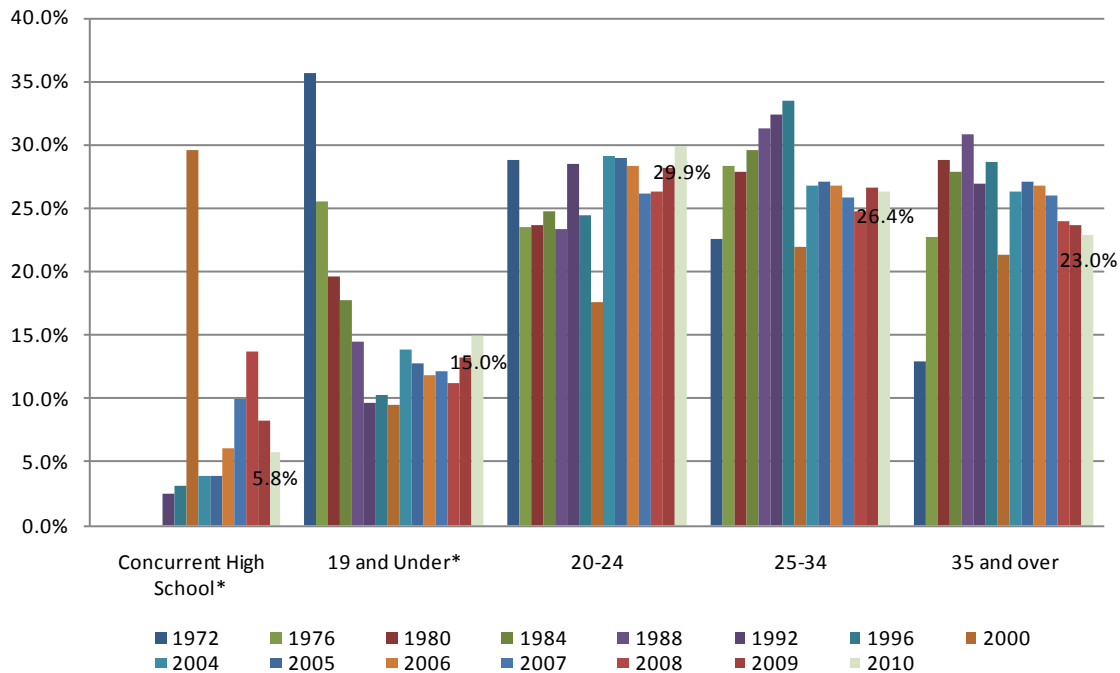
### Primary Language Distribution



Fall	English	Chinese	Farsi	Japanese	Korean	Russian	Spanish	Tagalog	Other	Total									
1992	7,178	81.1%	65	0.7%	142	1.6%	179	2.0%	65	0.7%	30	0.3%	609	6.9%	66	0.7%	520	5.9%	8,852
1993	6,115	80.3%	44	0.6%	169	2.2%	131	1.7%	55	0.7%	43	0.6%	562	7.4%	33	0.4%	466	6.1%	7,617
1994	6,211	80.5%	47	0.6%	153	2.0%	103	1.3%	47	0.6%	33	0.4%	610	7.9%	49	0.6%	464	6.0%	7,716
1995	6,289	81.4%	44	0.6%	153	2.0%	80	1.0%	38	0.5%	36	0.5%	613	7.9%	44	0.6%	429	5.6%	7,727
1996	6,394	81.3%	38	0.5%	127	1.6%	66	0.8%	46	0.6%	39	0.5%	692	8.8%	38	0.5%	429	5.4%	7,869
1997	6,017	80.6%	42	0.6%	132	1.8%	79	1.1%	50	0.7%	29	0.4%	635	8.5%	40	0.5%	443	5.9%	7,466
1998	5,552	79.8%	40	0.6%	116	1.7%	73	1.0%	45	0.7%	26	0.4%	646	9.3%	41	0.6%	417	6.0%	6,955
1999	5,436	78.5%	37	0.5%	120	1.7%	60	0.9%	35	0.5%	26	0.4%	813	11.7%	43	0.6%	357	5.2%	6,927
2000	5,957	79.4%	30	0.4%	123	1.6%	42	0.6%	48	0.6%	25	0.3%	881	11.7%	43	0.6%	350	4.7%	7,499
2001	6,425	77.3%	32	0.4%	131	1.6%	50	0.6%	35	0.4%	24	0.3%	1,156	13.9%	47	0.6%	412	5.0%	8,313
2002	7,815	80.4%	35	0.4%	183	1.9%	73	0.8%	37	0.4%	33	0.3%	938	9.6%	55	0.6%	548	5.6%	9,718
2003	7,813	79.7%	63	0.6%	196	2.0%	87	0.9%	53	0.5%	33	0.3%	907	9.2%	57	0.6%	596	6.1%	9,804
2004	6,532	78.7%	39	0.5%	165	2.0%	70	0.8%	41	0.5%	34	0.4%	863	10.4%	40	0.5%	522	6.3%	8,305
2005	6,716	80.0%	42	0.5%	173	2.1%	82	1.0%	48	0.6%	35	0.4%	774	9.2%	44	0.5%	476	5.7%	8,390
2006	6,594	81.5%	36	0.4%	140	1.7%	93	1.1%	44	0.5%	35	0.4%	700	8.6%	38	0.5%	408	5.0%	8,088
2007	7,601	82.5%	47	0.5%	155	1.7%	81	0.9%	48	0.5%	32	0.3%	705	7.7%	44	0.5%	503	5.5%	9,216
2008	8,929	82.8%	52	0.5%	118	1.1%	70	0.7%	70	0.7%	46	0.4%	910	8.4%	60	0.6%	523	4.9%	10,780
2009	9,084	84.4%	51	0.5%	101	0.9%	51	0.5%	59	0.5%	43	0.4%	864	8.0%	48	0.4%	467	4.3%	10,768
2010	9,435	85.6%	54	0.5%	95	0.9%	50	0.5%	62	0.6%	41	0.4%	804	7.3%	44	0.4%	438	4.0%	11,023

**Note:** Totals exclude unknowns. The question about Primary Language was added to the application for Admission in Fall 1992.  
**Source:** The Los Angeles Community College District Student Information System (SIS)

### Age Distribution



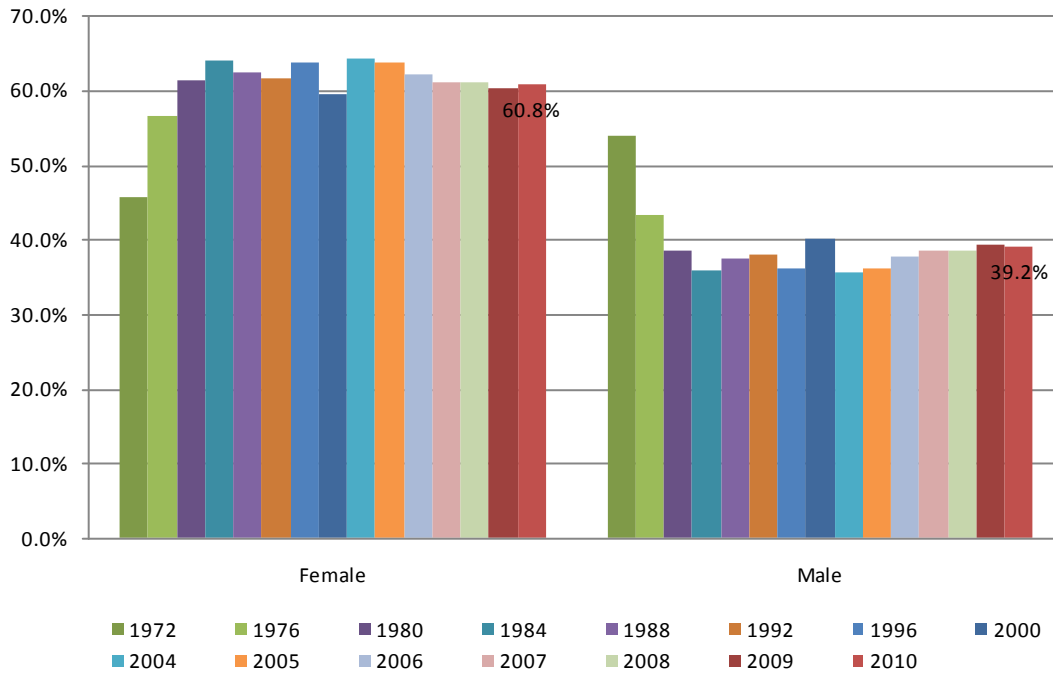
	Concurrent High School*		19 and Under*		20-24		25-34		35 and over		Total
Fall											
1972			1,768	35.7%	1,428	28.8%	1,121	22.6%	638	12.9%	4,954
1973			1,889	33.1%	1,567	27.5%	1,370	24.0%	874	15.3%	5,700
1974			2,214	30.6%	1,894	26.2%	1,843	25.5%	1,289	17.8%	7,240
1975			2,213	28.0%	1,960	24.8%	2,121	26.9%	1,599	20.3%	7,893
1976			1,907	25.5%	1,759	23.5%	2,116	28.3%	1,701	22.7%	7,483
1977			2,057	23.6%	2,040	23.4%	2,499	28.7%	2,117	24.3%	8,712
1978			2,002	19.9%	2,311	23.0%	2,691	26.8%	3,037	30.2%	10,041
1979			2,197	19.3%	2,747	24.1%	3,234	28.4%	3,230	28.3%	11,407
1980			2,285	19.6%	2,748	23.6%	3,248	27.9%	3,359	28.9%	11,640
1981			1,945	17.5%	2,626	23.7%	3,140	28.3%	3,374	30.4%	11,085
1982			1,988	18.4%	2,754	25.4%	3,087	28.5%	2,996	27.7%	10,825
1983			1,685	18.9%	2,227	25.0%	2,601	29.2%	2,409	27.0%	8,921
1984			1,295	17.8%	1,804	24.8%	2,146	29.5%	2,023	27.8%	7,268
1985			1,036	16.1%	1,562	24.3%	1,902	29.6%	1,936	30.1%	6,436
1986			1,343	15.7%	2,034	23.8%	2,634	30.8%	2,542	29.7%	8,553
1987			1,344	15.5%	1,972	22.7%	2,785	32.1%	2,581	29.7%	8,682
1988			1,301	14.4%	2,101	23.3%	2,819	31.3%	2,782	30.9%	9,003
1989			1,319	14.1%	2,385	25.5%	2,941	31.5%	2,696	28.9%	9,341
1990			1,283	13.3%	2,560	26.5%	3,106	32.1%	2,728	28.2%	9,677
1991	329	3.4%	1,045	10.7%	2,815	28.8%	3,025	31.0%	2,553	26.1%	9,768
1992	222	2.5%	854	9.6%	2,524	28.5%	2,873	32.5%	2,380	26.9%	8,852
1993	213	2.8%	728	9.6%	2,190	28.8%	2,594	34.1%	1,891	24.8%	7,617
1994	165	2.1%	776	10.1%	2,039	26.4%	2,642	34.2%	2,093	27.1%	7,716
1995	164	2.1%	834	10.8%	1,930	25.0%	2,649	34.3%	2,150	27.8%	7,727
1996	247	3.1%	809	10.3%	1,925	24.5%	2,630	33.4%	2,259	28.7%	7,869
1997	243	3.3%	751	10.1%	1,812	24.3%	2,498	33.5%	2,161	28.9%	7,466
1998	315	4.5%	683	9.8%	1,684	24.2%	2,236	32.1%	2,037	29.3%	6,955
1999	1,757	25.4%	555	8.0%	1,223	17.7%	1,728	25.0%	1,664	24.0%	6,927
2000	2,223	29.6%	708	9.4%	1,321	17.6%	1,647	22.0%	1,599	21.3%	7,499
2001	2,310	27.8%	791	9.5%	1,591	19.1%	1,803	21.7%	1,818	21.9%	8,313
2002	627	6.4%	1,079	11.1%	2,454	25.3%	2,827	29.1%	2,732	28.1%	9,718
2003	415	4.2%	1,308	13.3%	2,758	28.1%	2,696	27.5%	2,627	26.8%	9,804
2004	321	3.9%	1,148	13.8%	2,420	29.1%	2,223	26.8%	2,192	26.4%	8,305
2005	334	4.0%	1,075	12.8%	2,435	29.0%	2,273	27.1%	2,273	27.1%	8,390
2006	489	6.0%	963	11.9%	2,291	28.3%	2,173	26.9%	2,173	26.9%	8,088
2007	922	10.0%	1,121	12.2%	2,405	26.1%	2,378	25.8%	2,391	25.9%	9,216
2008	1,478	13.7%	1,212	11.2%	2,833	26.3%	2,672	24.8%	2,585	24.0%	10,780
2009	906	8.3%	1,451	13.3%	3,088	28.2%	2,909	26.6%	2,578	23.6%	10,932
2010	649	5.8%	1,666	15.0%	3,327	29.9%	2,941	26.4%	2,557	23.0%	11,140

Source: The Los Angeles Community College District Student Information System (SIS). Age is as defined in MIS.

\* Before 1991, Concurrent High School students were included in '19 and Under' counts.



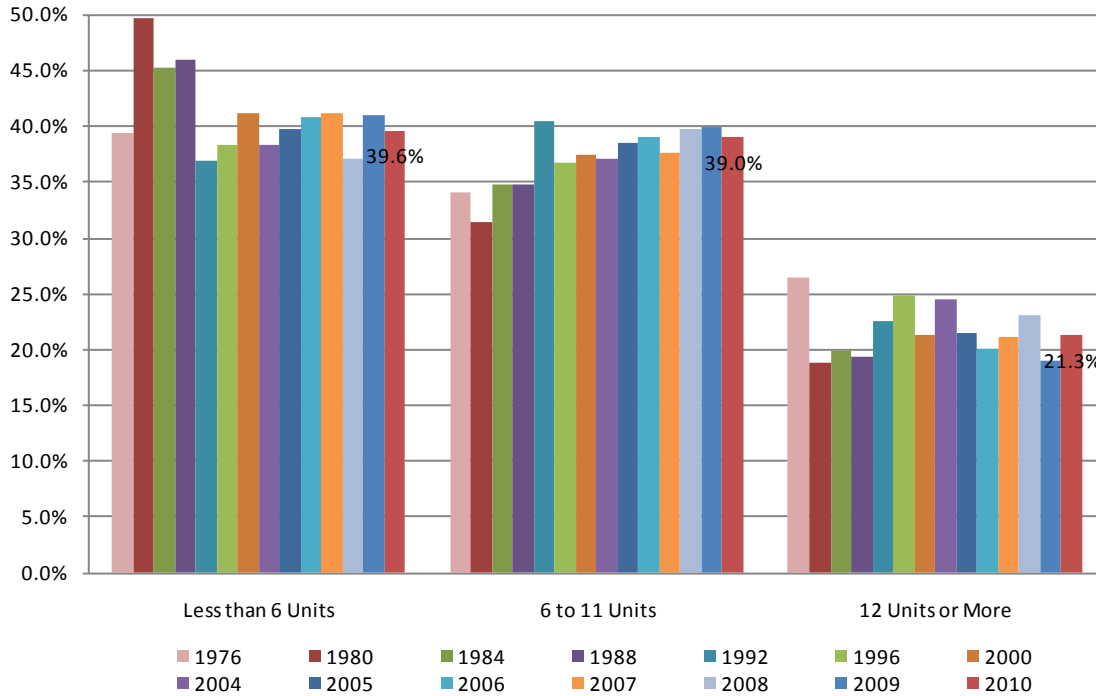
### Gender Distribution



Fall	Female		Male		Total
1972	2,273	45.9%	2,681	54.1%	4,954
1973	2,845	49.9%	2,855	50.1%	5,700
1974	3,766	52.0%	3,474	48.0%	7,240
1975	4,177	52.9%	3,716	47.1%	7,893
1976	4,231	56.5%	3,252	43.5%	7,483
1977	5,085	58.4%	3,627	41.6%	8,712
1978	6,060	60.4%	3,981	39.6%	10,041
1979	6,915	60.6%	4,492	39.4%	11,407
1980	7,153	61.5%	4,487	38.5%	11,640
1981	6,866	61.9%	4,219	38.1%	11,085
1982	6,636	61.3%	4,189	38.7%	10,825
1983	5,460	61.2%	3,461	38.8%	8,921
1984	4,659	64.1%	2,609	35.9%	7,268
1985	4,134	64.2%	2,302	35.8%	6,436
1986	5,392	63.0%	3,161	37.0%	8,553
1987	5,525	63.6%	3,157	36.4%	8,682
1988	5,619	62.4%	3,384	37.6%	9,003
1989	5,700	61.0%	3,641	39.0%	9,341
1990	5,936	61.3%	3,741	38.7%	9,677
1991	5,943	60.8%	3,825	39.2%	9,768
1992	5,472	61.8%	3,380	38.2%	8,852
1993	4,731	62.1%	2,886	37.9%	7,617
1994	4,880	63.3%	2,836	36.7%	7,716
1995	4,959	64.2%	2,768	35.8%	7,727
1996	5,023	63.8%	2,846	36.2%	7,869
1997	4,823	64.6%	2,643	35.4%	7,466
1998	4,572	65.7%	2,383	34.3%	6,955
1999	4,147	59.9%	2,780	40.1%	6,927
2000	4,478	59.7%	3,021	40.3%	7,499
2001	4,832	58.1%	3,481	41.9%	8,313
2002	6,110	62.9%	3,608	37.1%	9,718
2003	6,271	64.0%	3,533	36.0%	9,804
2004	5,342	64.3%	2,963	35.7%	8,305
2005	5,357	63.9%	3,033	36.1%	8,390
2006	5,025	62.1%	3,063	37.9%	8,088
2007	5,677	61.3%	3,584	38.7%	9,261
2008	6,606	61.3%	4,174	38.7%	10,780
2009	6,611	60.5%	4,321	39.5%	10,932
2010	6,777	60.8%	4,363	39.2%	11,140

Source: The Los Angeles Community College District Student Information System (SIS).

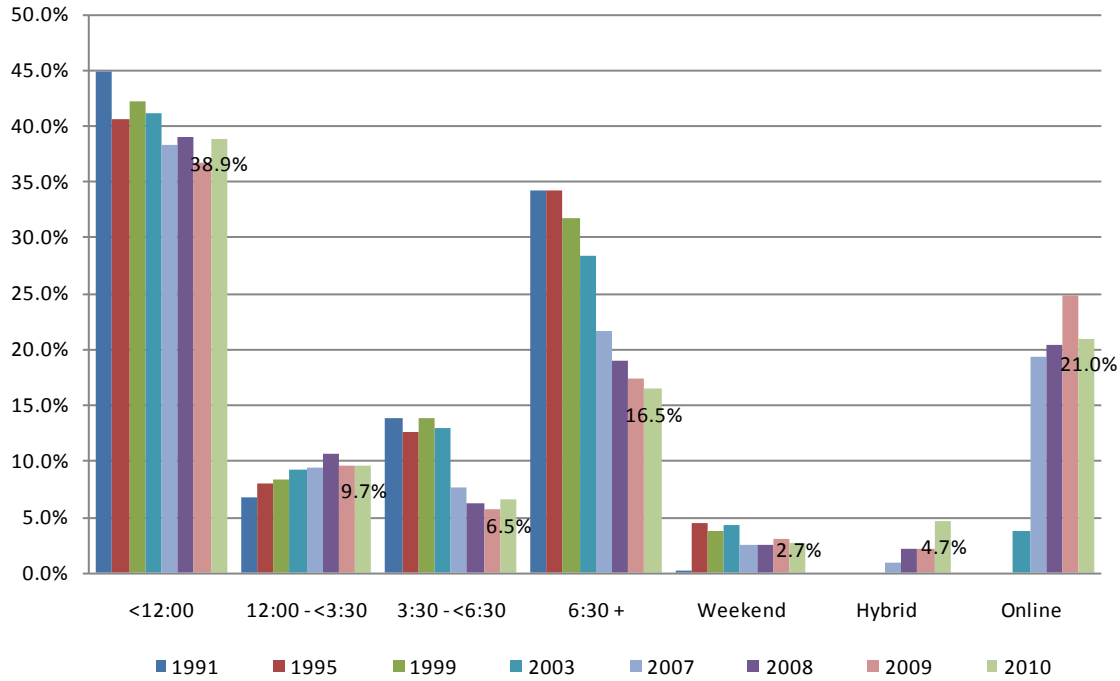
### Unit Load Distribution



Fall	Less than 6 Units	6 to 11 Units	12 Units or More	Total			
1976	2,950	39.4%	2,550	34.1%	1,983	26.5%	7,483
1977	3,587	41.2%	3,029	34.8%	2,096	24.1%	8,712
1978	4,418	44.0%	3,636	36.2%	1,987	19.8%	10,041
1979	5,756	50.5%	3,246	28.5%	2,405	21.1%	11,407
1980	5,786	49.7%	3,668	31.5%	2,185	18.8%	11,640
1981	5,682	51.3%	3,634	32.8%	1,769	16.0%	11,085
1982	5,173	47.8%	3,782	34.9%	1,870	17.3%	10,825
1983	3,802	42.6%	3,396	38.1%	1,722	19.3%	8,921
1984	3,296	45.4%	2,531	34.8%	1,441	19.8%	7,268
1985	2,920	45.4%	2,188	34.0%	1,328	20.6%	6,436
1986	4,095	47.9%	2,759	32.3%	1,699	19.9%	8,553
1987	4,229	48.7%	2,764	31.8%	1,689	19.5%	8,682
1988	4,137	45.9%	3,127	34.7%	1,739	19.3%	9,003
1989	4,133	44.2%	3,303	35.4%	1,905	20.4%	9,341
1990	4,020	41.5%	3,437	35.5%	2,221	22.9%	9,677
1991	3,744	38.3%	3,698	37.9%	2,326	23.8%	9,768
1992	3,264	36.9%	3,590	40.6%	1,998	22.6%	8,852
1993	2,811	36.9%	2,959	38.8%	1,848	24.3%	7,617
1994	2,811	36.4%	3,112	40.3%	1,794	23.2%	7,716
1995	2,889	37.4%	3,001	38.8%	1,837	23.8%	7,727
1996	3,026	38.5%	2,888	36.7%	1,955	24.8%	7,869
1997	2,836	38.0%	2,918	39.1%	1,711	22.9%	7,466
1998	2,890	41.6%	2,505	36.0%	1,560	22.4%	6,955
1999	2,868	41.4%	2,484	35.9%	1,575	22.7%	6,927
2000	3,086	41.2%	2,808	37.4%	1,605	21.4%	7,499
2001	3,482	41.9%	3,158	38.0%	1,673	20.1%	8,313
2002	3,863	39.8%	3,812	39.2%	2,043	21.0%	9,718
2003	3,790	38.7%	3,745	38.2%	2,268	23.1%	9,804
2004	3,185	38.3%	3,089	37.2%	2,031	24.5%	8,305
2005	3,343	39.8%	3,241	38.6%	1,806	21.5%	8,390
2006	3,304	40.8%	3,157	39.0%	1,627	20.1%	8,088
2007	3,794	41.2%	3,469	37.6%	1,953	21.2%	9,216
2008	4,005	37.2%	4,281	39.7%	2,494	23.1%	10,780
2009	4,480	41.0%	4,363	39.9%	2,089	19.1%	10,932
2010	4,417	39.6%	4,348	39.0%	2,375	21.3%	11,140

**Note:** Student course load is the number of units in which a student is enrolled; used for determining full-time/part-time status.  
**Source:** The Los Angeles Community College District Student Information System (SIS).

### Enrollment Distribution By Time of Day

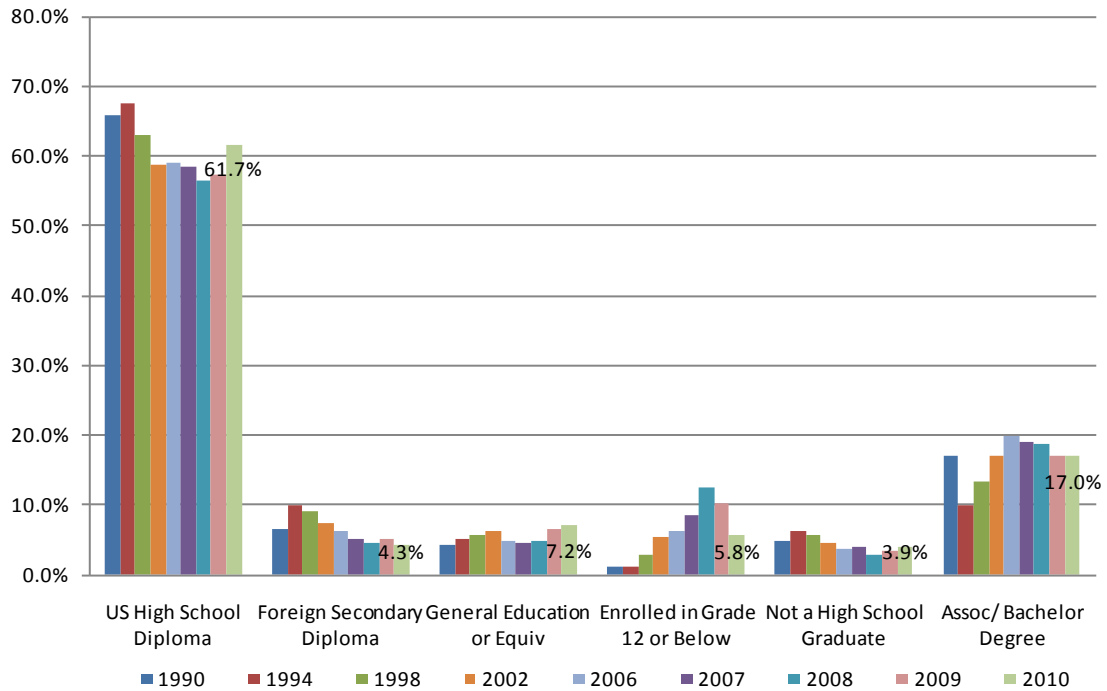


Fall	<12:00	12:00 - <3:30	3:30 - <6:30	6:30 +	Weekend	Hybrid	Online	Total
1991	45.0%	6.8%	13.9%	34.3%	0.1%			100.0%
1992	44.4%	7.4%	13.1%	35.1%	0.0%			100.0%
1993	45.5%	6.9%	13.0%	34.4%	0.2%			100.0%
1994	41.5%	7.3%	12.2%	34.2%	4.8%			100.0%
1995	40.7%	8.1%	12.6%	34.2%	4.4%			100.0%
1996	39.1%	9.2%	13.5%	29.3%	9.0%			100.0%
1997	39.9%	8.2%	13.9%	32.7%	5.3%			100.0%
1998	41.9%	8.9%	13.4%	32.2%	3.6%			100.0%
1999	42.2%	8.4%	13.9%	31.7%	3.7%			100.0%
2000	43.7%	8.2%	14.6%	29.6%	3.9%			100.0%
2001	39.8%	11.2%	14.8%	28.0%	5.4%		0.8%	100.0%
2002	40.5%	9.3%	12.9%	30.7%	4.1%		2.5%	100.0%
2003	41.2%	9.3%	12.9%	28.5%	4.3%		3.8%	100.0%
2004	42.7%	9.9%	10.3%	26.5%	4.2%		6.4%	100.0%
2005	40.9%	9.3%	8.9%	24.2%	3.0%		13.7%	100.0%
2006	39.5%	8.6%	8.6%	23.6%	3.0%		16.7%	100.0%
2007	38.3%	9.4%	7.7%	21.7%	2.6%	1.0%	19.3%	100.0%
2008	39.0%	10.6%	6.2%	19.0%	2.5%	2.1%	20.5%	100.0%
2009	36.8%	9.7%	5.8%	17.4%	3.1%	2.2%	24.9%	100.0%
2010	38.9%	9.7%	6.5%	16.5%	2.7%	4.7%	21.0%	100.0%

Note: Totals exclude TBAs.

Source: The Los Angeles Community College District Student Information System (SIS).

### Prior Education Distribution

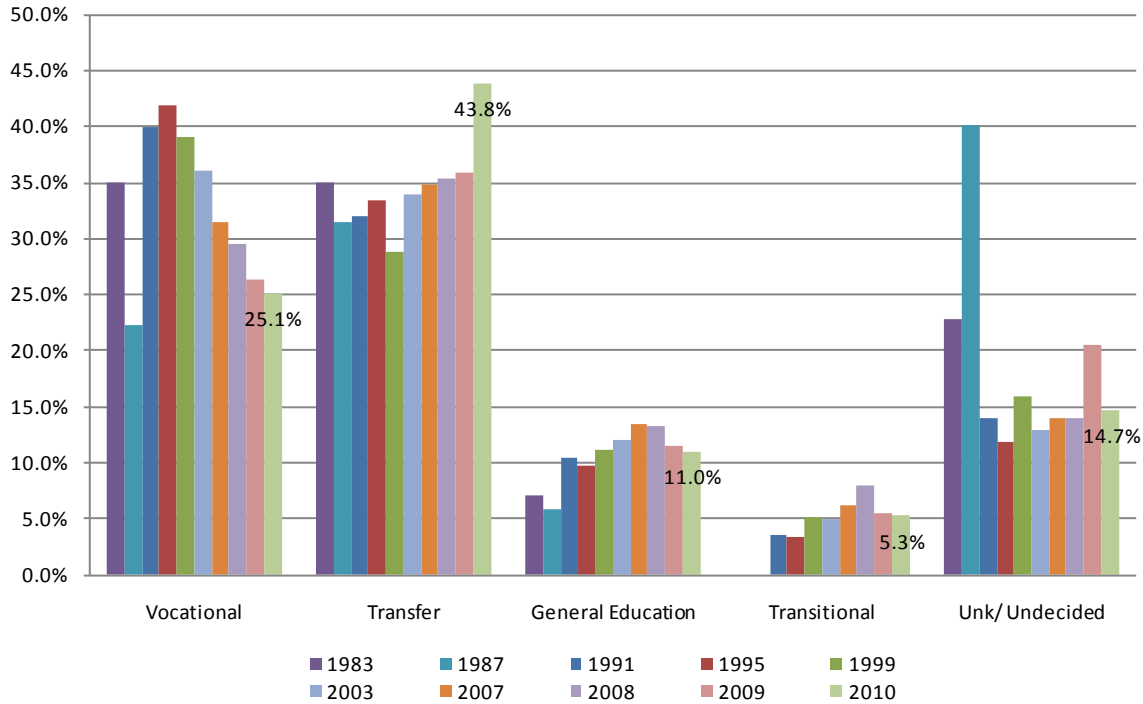


	US High School Diploma		Foreign Secondary Diploma		General Education or Equiv		Enrolled in Grade 12 or Below		Not a High School Graduate		Assoc/Bachelor Degree		Total
Fall	Count	%	Count	%	Count	%	Count	%	Count	%	Count	%	
1990	6,381	65.9%	625	6.5%	428	4.4%	129	1.3%	469	4.8%	1,645	17.0%	9,677
1991	6,197	63.4%	769	7.9%	445	4.6%	166	1.7%	510	5.2%	1,682	17.2%	9,768
1992	5,676	64.1%	750	8.5%	399	4.5%	105	1.2%	469	5.3%	1,453	16.4%	8,852
1993	5,111	67.1%	715	9.4%	388	5.1%	96	1.3%	485	6.4%	822	10.8%	7,617
1994	5,211	67.5%	762	9.9%	395	5.1%	93	1.2%	478	6.2%	777	10.1%	7,716
1995	5,348	69.2%	710	9.2%	416	5.4%	61	0.8%	412	5.3%	781	10.1%	7,727
1996	5,203	66.1%	715	9.1%	406	5.2%	86	1.1%	464	5.9%	995	12.6%	7,869
1997	4,828	64.7%	646	8.6%	440	5.9%	111	1.5%	432	5.8%	1,009	13.5%	7,466
1998	4,394	63.2%	630	9.1%	404	5.8%	196	2.8%	400	5.8%	931	13.4%	6,955
1999	4,366	63.0%	625	9.0%	381	5.5%	263	3.8%	360	5.2%	932	13.5%	6,927
2000	4,619	61.6%	577	7.7%	408	5.4%	440	5.9%	362	4.8%	1,093	14.6%	7,499
2001	4,825	58.0%	657	7.9%	494	5.9%	550	6.6%	433	5.2%	1,355	16.3%	8,313
2002	5,723	58.9%	735	7.6%	615	6.3%	526	5.4%	460	4.7%	1,659	17.1%	9,718
2003	5,933	60.5%	729	7.4%	593	6.0%	434	4.4%	442	4.5%	1,674	17.1%	9,804
2004	5,197	62.6%	629	7.6%	530	6.4%	321	3.9%	353	4.3%	1,274	15.3%	8,305
2005	5,100	60.8%	575	6.9%	430	5.1%	312	3.7%	314	3.7%	1,658	19.8%	8,390
2006	4,772	59.0%	499	6.2%	394	4.9%	504	6.2%	305	3.8%	1,614	20.0%	8,088
2007	5,381	58.4%	475	5.1%	432	4.7%	801	8.7%	366	4.0%	1,761	19.1%	9,216
2008	6,095	56.5%	482	4.5%	518	4.8%	1,351	12.5%	299	2.8%	2,035	18.9%	10,780
2009	5,162	57.3%	481	5.3%	594	6.6%	938	10.4%	302	3.4%	1,528	17.0%	9,005
2010	6,864	61.7%	483	4.3%	799	7.2%	641	5.8%	438	3.9%	1,896	17.0%	11,121

**Note:** Totals exclude unknowns.

**Source:** The Los Angeles Community College District Student Information System (SIS).

### Educational Goal Distribution



Fall	Vocational		Transfer		General Education		Transitional		Unk/ Undecided		Total
1983	3,121	35.0%	3,132	35.1%	631	7.1%	0	0.0%	2,037	22.8%	8,921
1984	2,282	31.4%	2,545	35.0%	471	6.5%	0	0.0%	1,970	27.1%	7,268
1985	1,763	27.4%	2,269	35.3%	391	6.1%	0	0.0%	2,013	31.3%	6,436
1986	2,053	24.0%	2,342	27.4%	431	5.0%	0	0.0%	3,727	43.6%	8,553
1987	1,940	22.3%	2,741	31.6%	509	5.9%	0	0.0%	3,492	40.2%	8,682
1988	1,761	19.6%	2,730	30.3%	518	5.8%	0	0.0%	3,994	44.4%	9,003
1989	1,992	21.3%	3,102	33.2%	611	6.5%	0	0.0%	3,636	38.9%	9,341
1990	3,471	35.9%	3,303	34.1%	1,122	11.6%	214	2.2%	1,566	16.2%	9,677
1991	3,909	40.0%	3,119	31.9%	1,024	10.5%	347	3.5%	1,369	14.0%	9,768
1992	3,620	40.9%	2,779	31.4%	955	10.8%	335	3.8%	1,163	13.1%	8,852
1993	3,150	41.4%	2,494	32.7%	699	9.2%	316	4.1%	959	12.6%	7,617
1994	3,209	41.6%	2,585	33.5%	736	9.5%	308	4.0%	878	11.4%	7,716
1995	3,232	41.8%	2,579	33.4%	746	9.7%	258	3.3%	912	11.8%	7,727
1996	3,397	43.2%	2,470	31.4%	829	10.5%	344	4.4%	829	10.5%	7,869
1997	3,075	41.2%	2,378	31.8%	857	11.5%	301	4.0%	855	11.5%	7,466
1998	2,859	41.1%	2,178	31.3%	793	11.4%	281	4.0%	843	12.1%	6,955
1999	2,702	39.0%	1,999	28.9%	770	11.1%	358	5.2%	1,097	15.8%	6,927
2000	2,786	37.2%	2,188	29.2%	811	10.8%	461	6.1%	1,253	16.7%	7,499
2001	2,869	34.5%	2,317	27.9%	915	11.0%	506	6.1%	1,706	20.5%	8,313
2002	3,695	38.0%	3,079	31.7%	1,232	12.7%	547	5.6%	1,165	12.0%	9,718
2003	3,537	36.1%	3,332	34.0%	1,179	12.0%	493	5.0%	1,263	12.9%	9,804
2004	2,917	35.1%	2,851	34.3%	990	11.9%	458	5.5%	1,089	13.1%	8,305
2005	3,094	36.9%	2,781	33.2%	957	11.4%	423	5.0%	1,135	13.5%	8,390
2006	2,906	35.9%	2,571	31.8%	1,079	13.3%	435	5.4%	1,097	13.6%	8,088
2007	2,906	31.5%	3,203	34.8%	1,242	13.5%	576	6.2%	1,289	14.0%	9,216
2008	3,177	29.5%	3,805	35.3%	1,423	13.2%	863	8.0%	1,512	14.0%	10,780
2009	2,891	26.4%	3,924	35.9%	1,255	11.5%	606	5.5%	2,256	20.6%	10,932
2010	2,801	25.1%	4,882	43.8%	1,230	11.0%	588	5.3%	1,639	14.7%	11,140

**Note:** The Major Goal Categories are inclusive of the following responses to the question on the Application for Admission:  
**Vocational** includes: Preparing New Career (Old Category = Job Skills); Advance in Job/Career; Discover Career Goals; Maintain License, Vocational Degree without Transfer; and Vocational Certificate without Transfer.

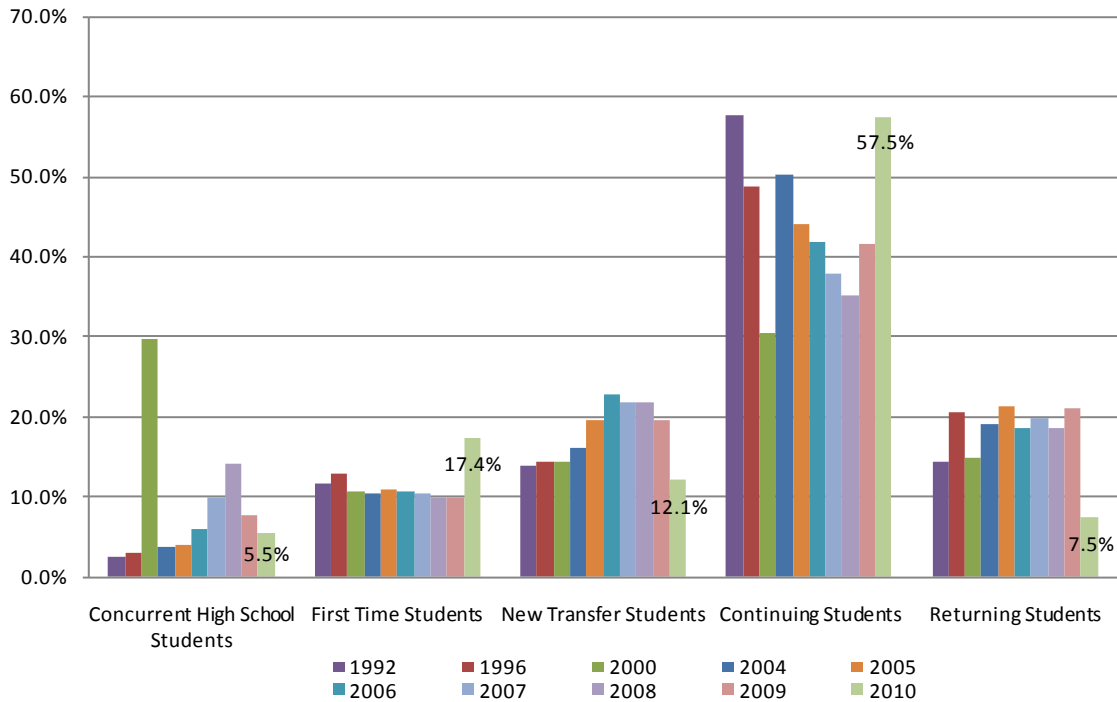
**Transfer** includes: Transfer with Degree, Complete 4-year college requirement, Transfer without Degree.

**General Education** includes: Associate Degree without Transfer and Personal Enrichment.

**Transitional** includes: Improve Basic Skills, Complete High School Diploma, and Move from noncredit to credit coursework

**Source:** The Los Angeles Community College District Student Information System (SIS).

### Entering Status Distribution



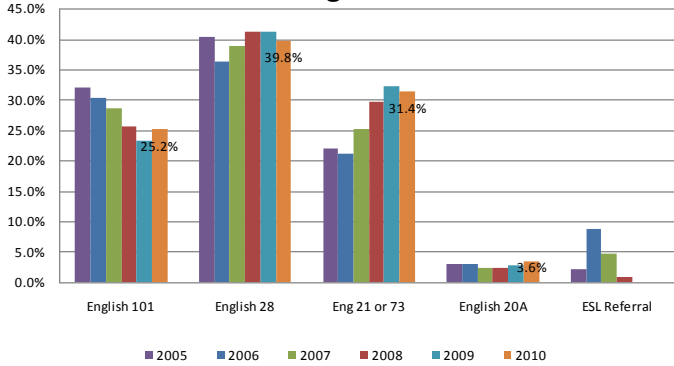
	Concurrent High School Students		First Time Students		New Transfer Students		Continuing Students		Returning Students		Total
Fall	Students	%	Students	%	Students	%	Students	%	Students	%	
1992	222	2.5%	1,024	11.6%	1,227	13.9%	5,102	57.6%	1,278	14.4%	8,852
1993	213	2.8%	932	12.2%	951	12.5%	4,306	56.5%	1,215	15.9%	7,617
1994	165	2.1%	981	12.7%	1,104	14.3%	4,101	53.2%	1,364	17.7%	7,716
1995	164	2.1%	1,043	13.5%	1,063	13.8%	3,899	50.5%	1,558	20.2%	7,727
1996	247	3.1%	1,020	13.0%	1,131	14.4%	3,843	48.8%	1,628	20.7%	7,869
1997	243	3.3%	918	12.3%	1,226	16.4%	3,625	48.5%	1,454	19.5%	7,466
1998	315	4.5%	873	12.6%	1,146	16.5%	3,265	46.9%	1,357	19.5%	6,955
1999	1,757	25.4%	688	9.9%	921	13.3%	2,445	35.3%	1,116	16.1%	6,927
2000	2,223	29.6%	797	10.6%	1,078	14.4%	2,279	30.4%	1,121	15.0%	7,499
2001	2,310	27.8%	853	10.3%	1,272	15.3%	2,657	32.0%	1,221	14.7%	8,313
2002	627	6.4%	1,129	11.6%	2,110	21.7%	3,932	40.5%	1,921	19.8%	9,718
2003	415	4.2%	1,168	11.9%	1,999	20.4%	4,460	45.5%	1,762	18.0%	9,804
2004	321	3.9%	867	10.4%	1,348	16.2%	4,177	50.3%	1,591	19.2%	8,305
2005	334	4.0%	921	11.0%	1,649	19.6%	3,701	44.1%	1,786	21.3%	8,390
2006	489	6.0%	857	10.6%	1,842	22.8%	3,389	41.9%	1,511	18.7%	8,088
2007	922	10.0%	970	10.5%	2,016	21.9%	3,483	37.8%	1,826	19.8%	9,216
2008	1,520	14.1%	1,078	10.0%	2,350	21.8%	3,795	35.2%	2,016	18.7%	10,780
2009	842	7.7%	1,093	10.0%	2,132	19.5%	4,548	41.6%	2,318	21.2%	10,932
2010	618	5.5%	1,942	17.4%	1,344	12.1%	6,406	57.5%	830	7.5%	11,140

*Note: Totals exclude unknowns.*

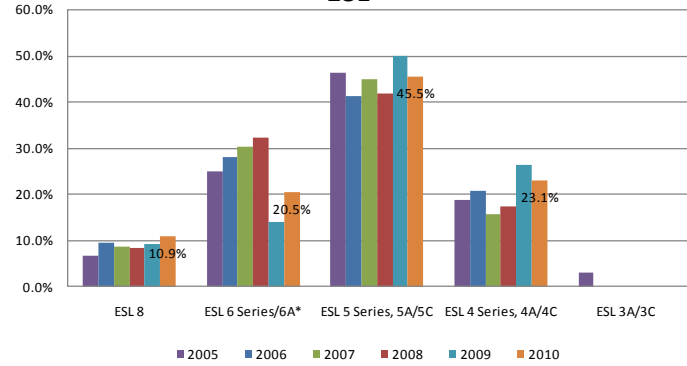
*Source: The Los Angeles Community College District Office Student Information System (SIS).*

### Assessment and Placement Summary Math, English, and ESL 2005-2010

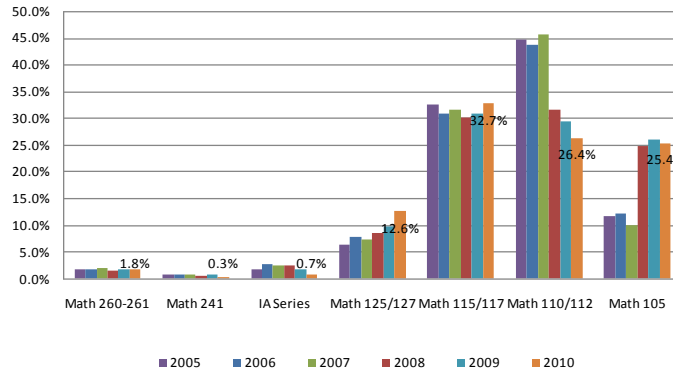
**English**



**ESL**



**Math**



		MATH PLACEMENT															
Course Level	Recommended Placement	2003		2004		2005		2006		2007		2008		2009		2010	
College Level	Math 260-261	39	1.6%	44	2.0%	44	1.9%	39	1.8%	54	2.0%	44	1.5%	51	1.7%	50	1.8%
College Level	Math 241	19	0.8%	25	1.2%	20	0.9%	17	0.8%	23	0.9%	17	0.6%	21	0.7%	9	0.3%
Pre-College Level	IA Series	69	2.8%	59	2.7%	44	1.9%	60	2.8%	63	2.4%	75	2.5%	49	1.7%	21	0.7%
Pre-College Level	Math 125/127	164	6.7%	137	6.3%	148	6.3%	168	7.7%	192	7.3%	260	8.6%	287	9.7%	360	12.6%
Pre-College Level	Math 115/117	759	31.1%	688	31.8%	763	32.6%	672	30.9%	836	31.6%	914	30.3%	916	30.9%	933	32.7%
Basic Skills	Math 110/112	1,090	44.6%	957	44.2%	1,046	44.7%	955	43.9%	1,207	45.7%	954	31.6%	872	29.4%	752	26.4%
Basic Skills	Math 105	304	12.4%	255	11.8%	277	11.8%	265	12.2%	267	10.1%	752	24.9%	771	26.0%	725	25.4%
<b>Total</b>		<b>2,444</b>	<b>100%</b>	<b>2,165</b>	<b>100%</b>	<b>2,342</b>	<b>100%</b>	<b>2,176</b>	<b>100%</b>	<b>2,642</b>	<b>100%</b>	<b>3,016</b>	<b>100%</b>	<b>2,967</b>	<b>100%</b>	<b>2,850</b>	<b>100%</b>
		ENGLISH PLACEMENT															
Course Level	Recommended Placement	2003		2004		2005		2006		2007		2008		2009		2010	
College Level	English 101	637	25.7%	511	25.3%	612	32.2%	583	30.3%	652	28.7%	689	25.6%	606	23.4%	653	25.2%
Pre-College Level	English 28	984	39.6%	808	40.0%	770	40.5%	700	36.3%	884	38.9%	1,114	41.3%	1,068	41.3%	1,032	39.8%
Basic Skills	Eng 21 or 73	780	31.4%	639	31.6%	419	22.1%	411	21.3%	574	25.3%	803	29.8%	840	32.4%	814	31.4%
Basic Skills	English 20A	82	3.3%	64	3.2%	58	3.1%	60	3.1%	53	2.3%	64	2.4%	75	2.9%	92	3.6%
Basic Skills	ESL Referral					41	2.2%	172	8.9%	109	4.8%	26	1.0%				
<b>Total</b>		<b>2,483</b>	<b>100%</b>	<b>2,022</b>	<b>100%</b>	<b>1,900</b>	<b>100%</b>	<b>1,926</b>	<b>100%</b>	<b>2,272</b>	<b>100%</b>	<b>2,696</b>	<b>100%</b>	<b>2,589</b>	<b>100%</b>	<b>2,591</b>	<b>100%</b>
		ESL PLACEMENT															
Course Level	Recommended Placement	2003		2004		2005		2006		2007		2008		2009		2010	
ESL	ESL 8					27	6.8%	40	9.7%	40	8.7%	22	8.4%	16	9.4%	17	10.9%
ESL	ESL 6 Series/6A*	67	25.5%	50	24.6%	99	25.1%	116	28.2%	140	30.4%	85	32.3%	24	14.1%	32	20.5%
ESL	ESL 5 Series, 5A/5C	116	44.1%	102	50.2%	183	46.3%	170	41.3%	208	45.1%	110	41.8%	85	50.0%	71	45.5%
ESL	ESL 4 Series, 4A/4C	67	25.5%	42	20.7%	74	18.7%	86	20.9%	73	15.8%	46	17.5%	45	26.5%	36	23.1%
ESL	ESL 3A/3C	13	4.9%	9	4.4%	12	3.0%										
<b>Total</b>		<b>263</b>	<b>100%</b>	<b>203</b>	<b>100%</b>	<b>395</b>	<b>100%</b>	<b>412</b>	<b>100%</b>	<b>461</b>	<b>100%</b>	<b>263</b>	<b>100%</b>	<b>170</b>	<b>100%</b>	<b>156</b>	<b>100%</b>

Source: The Los Angeles Community College District Student Information System (SIS)