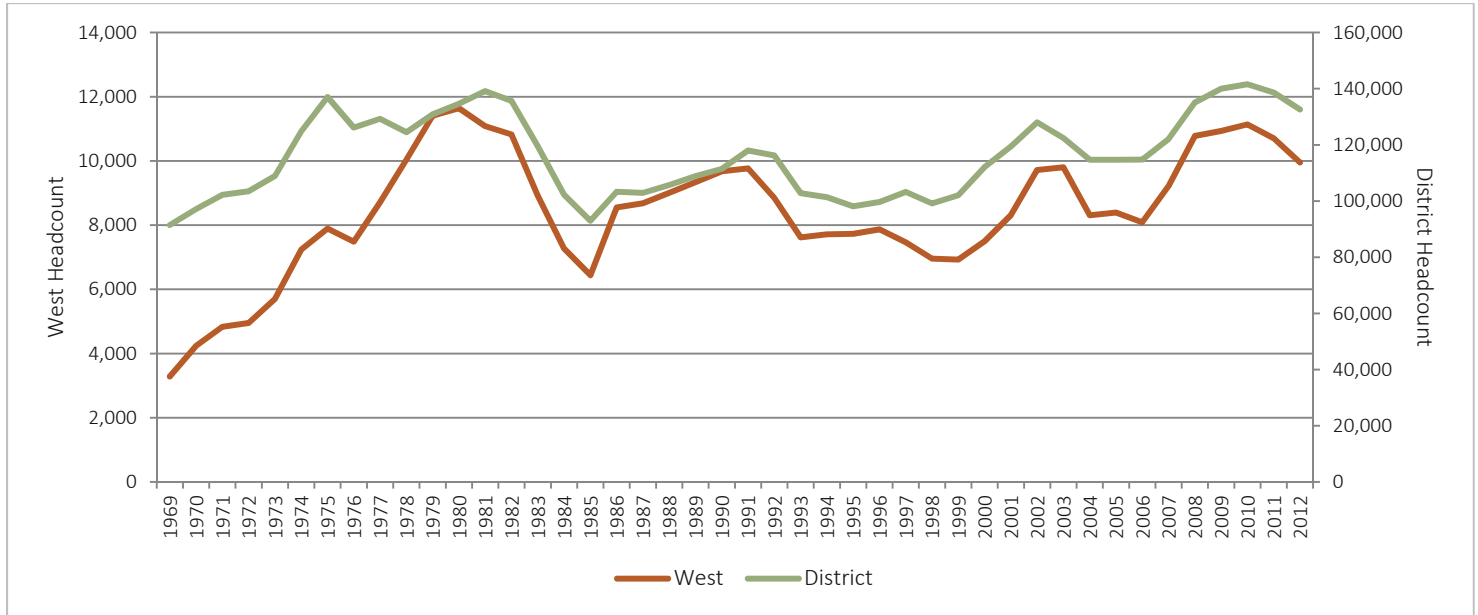


Credit Census Headcount

Fall 1969 - Fall 2012



Fall Term	West	Percent Change	District
1969	3,282		91,469
1970	4,239	29.2%	97,176
1971	4,832	14.0%	102,256
1972	4,954	2.5%	103,456
1973	5,700	15.1%	108,922
1974	7,240	27.0%	124,839
1975	7,893	9.0%	137,031
1976	7,483	-5.2%	126,143
1977	8,712	16.4%	129,296
1978	10,041	15.3%	124,523
1979	11,407	13.6%	130,896
1980	11,640	2.0%	134,622
1981	11,085	-4.8%	139,168
1982	10,825	-2.3%	135,644
1983	8,921	-17.6%	119,569
1984	7,268	-18.5%	102,313
1985	6,436	-11.4%	93,026
1986	8,553	32.9%	103,336
1987	8,682	1.5%	102,912
1988	9,003	3.7%	105,678
1989	9,341	3.8%	108,880
1990	9,677	3.6%	111,485

Fall Term	West	Percent Change	District
1991	9,768	0.9%	117,994
1992	8,852	-9.4%	116,251
1993	7,617	-14.0%	102,800
1994	7,716	1.3%	101,378
1995	7,727	0.1%	98,104
1996	7,869	1.8%	99,654
1997	7,466	-5.1%	103,251
1998	6,955	-6.8%	99,165
1999	6,927	-0.4%	102,075
2000	7,499	8.3%	112,155
2001	8,313	10.9%	119,433
2002	9,718	16.9%	128,013
2003	9,804	0.9%	122,441
2004	8,305	-15.3%	114,681
2005	8,390	1.0%	114,701
2006	8,088	-3.6%	114,777
2007	9,216	13.9%	122,060
2008	10,780	17.0%	135,103
2009	10,932	1.4%	139,990
2010	11,140	1.9%	141,586
2011	10,703	-3.9%	138,652
2012	9,954	-7.0%	132,601

Note: Headcount is the number of individual students (unduplicated).
Source: The Los Angeles Community College District Office Student Information System (SIS).

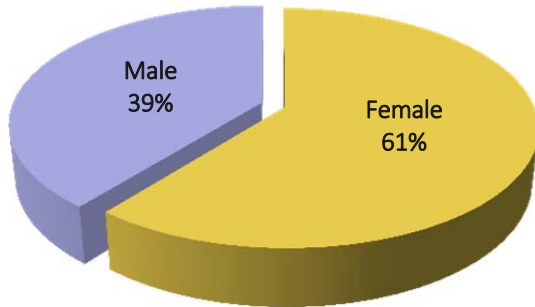


Student Profile

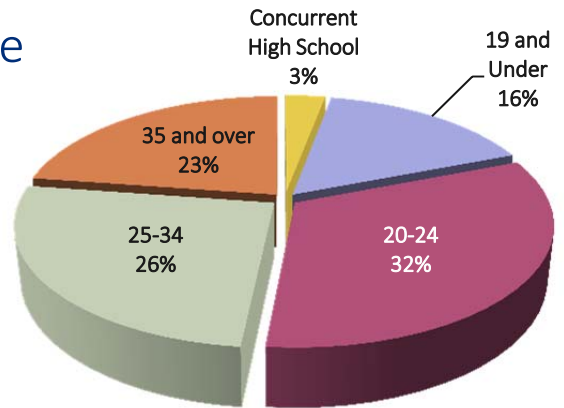
Fall 2012

Headcount 9,954

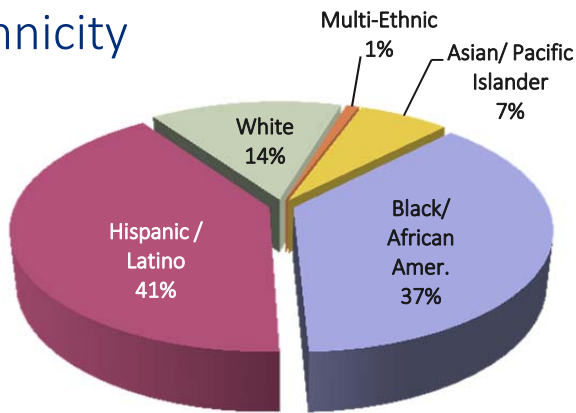
Gender



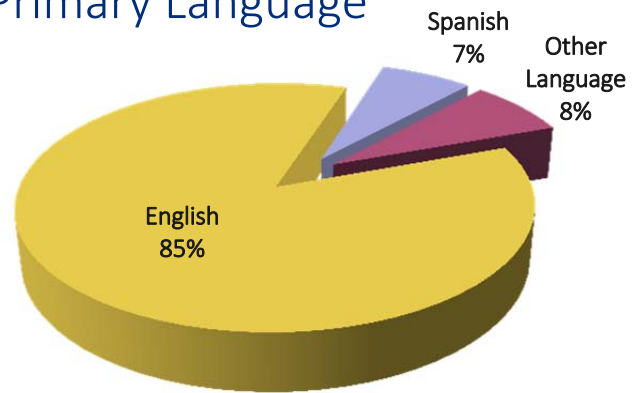
Age



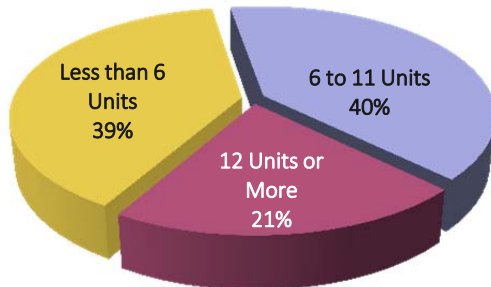
Ethnicity



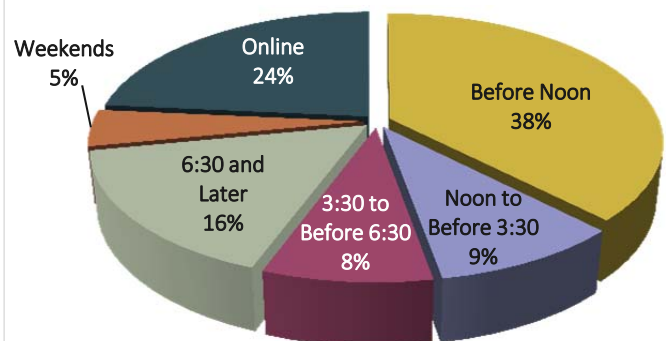
Primary Language



Full Time-Part Time Student Enrollment (Unit Load)



Enrollment by Time of Day



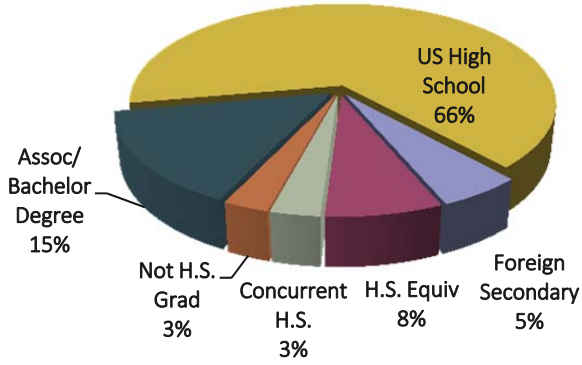
Source: The Los Angeles Community College District Office Student Information System (SIS).

Student Profile

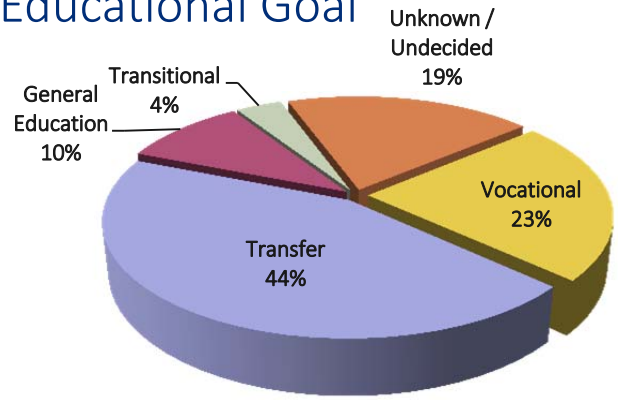
Fall 2012

Headcount 9,954

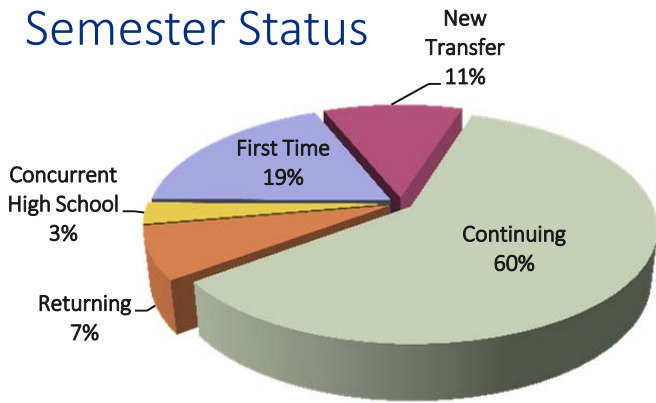
Prior Education



Educational Goal



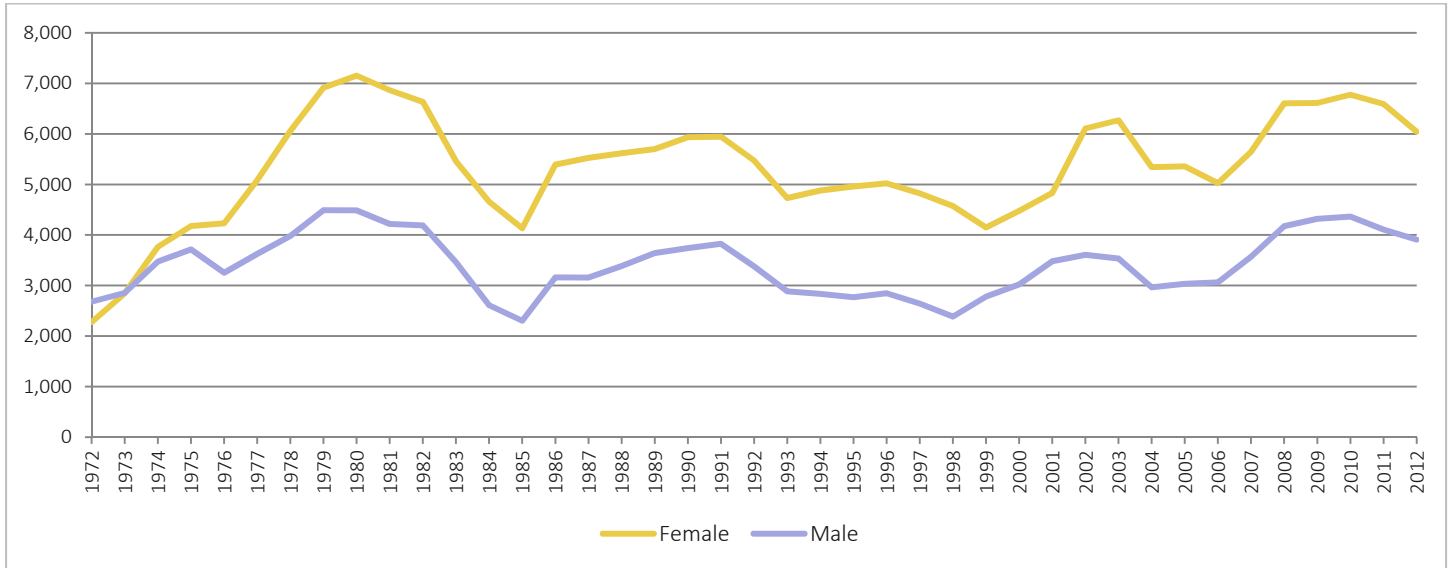
Semester Status



Source: The Los Angeles Community College District Office Student Information System (SIS).

Demographics

Gender Distribution



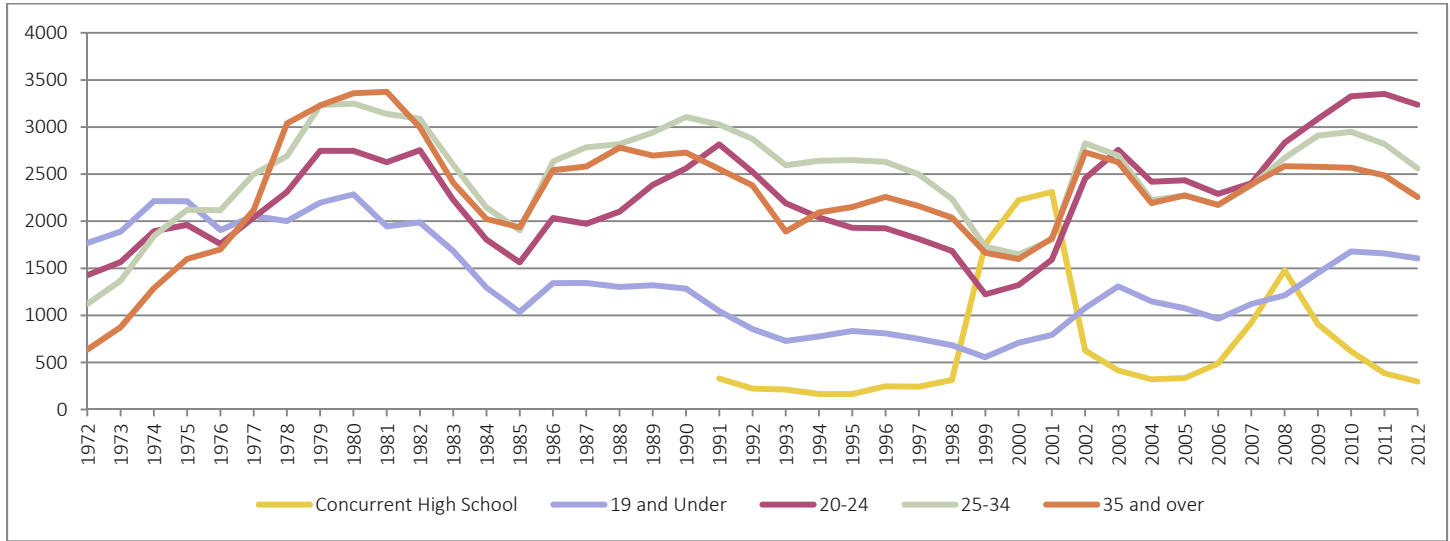
Fall	Female		Male		Total
1972	2,273	45.88%	2,681	54.12%	4,954
1975	4,177	52.92%	3,716	47.08%	7,893
1980	7,153	61.45%	4,487	38.55%	11,640
1985	4,134	64.23%	2,302	35.77%	6,436
1990	5,936	61.34%	3,741	38.66%	9,677
1991	5,943	60.84%	3,825	39.16%	9,768
1992	5,472	61.82%	3,380	38.18%	8,852
1993	4,731	62.12%	2,886	37.88%	7,617
1994	4,880	63.25%	2,836	36.75%	7,716
1995	4,959	64.17%	2,768	35.83%	7,727
1996	5,023	63.83%	2,846	36.17%	7,869
1997	4,823	64.60%	2,643	35.40%	7,466
1998	4,572	65.73%	2,383	34.27%	6,955
1999	4,147	59.87%	2,780	40.13%	6,927
2000	4,478	59.71%	3,021	40.29%	7,499
2001	4,832	58.12%	3,481	41.88%	8,313
2002	6,110	62.88%	3,608	37.12%	9,718
2003	6,271	63.96%	3,533	36.04%	9,804
2004	5,342	64.32%	2,963	35.68%	8,305
2005	5,357	63.85%	3,033	36.15%	8,390
2006	5,025	62.13%	3,063	37.87%	8,088
2007	5,646	61.26%	3,570	38.74%	9,216
2008	6,606	61.28%	4,174	38.72%	10,780
2009	6,611	60.50%	4,321	39.50%	10,932
2010	6,777	60.80%	4,363	39.20%	11,140
2011	6,595	61.60%	4,108	38.40%	10,703
2012	6,046	60.70%	3,908	39.30%	9,954

Source: The Los Angeles Community College District Office Student Information System (SIS).



Demographics

Age Distribution



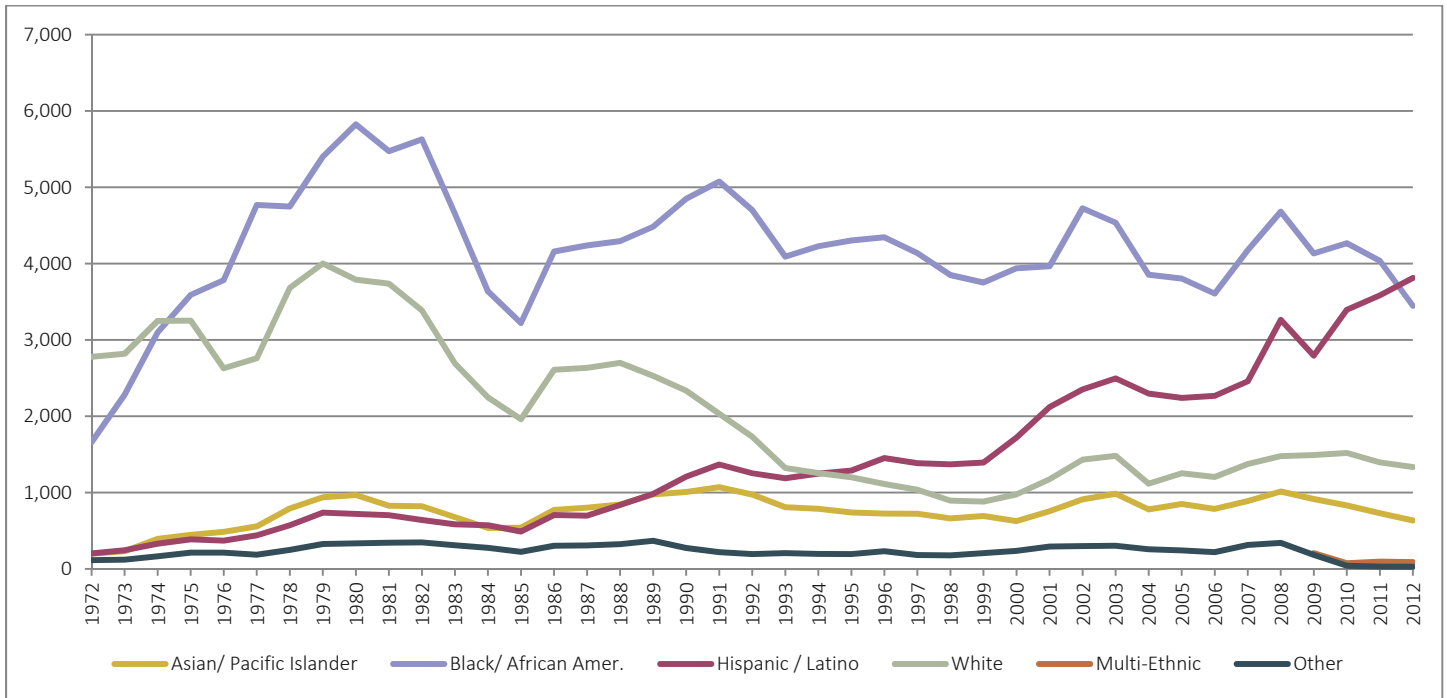
Fall	Concurrent High School*		19 and Under*		20-24		25-34		35 and over		Total
1972			1,768	35.7%	1,428	28.8%	1,121	22.6%	638	12.9%	4,954
1975			2,213	28.0%	1,960	24.8%	2,121	26.9%	1,599	20.3%	7,893
1980			2,285	19.6%	2,748	23.6%	3,248	27.9%	3,359	28.9%	11,640
1985			1,036	16.1%	1,562	24.3%	1,902	29.6%	1,936	30.1%	6,436
1990			1,283	13.3%	2,560	26.5%	3,106	32.1%	2,728	28.2%	9,677
1991	329	3.4%	1,045	10.7%	2,815	28.8%	3,025	31.0%	2,553	26.1%	9,768
1992	222	2.5%	854	9.6%	2,524	28.5%	2,873	32.5%	2,380	26.9%	8,852
1993	213	2.8%	728	9.6%	2,190	28.8%	2,594	34.1%	1,891	24.8%	7,617
1994	165	2.1%	776	10.1%	2,039	26.4%	2,642	34.2%	2,093	27.1%	7,716
1995	164	2.1%	834	10.8%	1,930	25.0%	2,649	34.3%	2,150	27.8%	7,727
1996	247	3.1%	809	10.3%	1,925	24.5%	2,630	33.4%	2,259	28.7%	7,869
1997	243	3.3%	751	10.1%	1,812	24.3%	2,498	33.5%	2,161	29.0%	7,466
1998	315	4.5%	683	9.8%	1,684	24.2%	2,236	32.1%	2,037	29.3%	6,955
1999	1,757	25.4%	555	8.0%	1,223	17.7%	1,728	25.0%	1,664	24.0%	6,927
2000	2,223	29.7%	708	9.4%	1,321	17.6%	1,647	22.0%	1,599	21.3%	7,499
2001	2,310	27.8%	791	9.5%	1,591	19.1%	1,803	21.7%	1,818	21.9%	8,313
2002	627	6.5%	1,079	11.1%	2,454	25.3%	2,827	29.1%	2,732	28.1%	9,718
2003	415	4.2%	1,308	13.3%	2,758	28.1%	2,696	27.5%	2,627	26.8%	9,804
2004	321	3.9%	1,148	13.8%	2,420	29.1%	2,223	26.8%	2,192	26.4%	8,305
2005	334	4.0%	1,075	12.8%	2,435	29.0%	2,273	27.1%	2,273	27.1%	8,390
2006	489	6.0%	963	11.9%	2,291	28.3%	2,173	26.9%	2,173	26.9%	8,088
2007	922	10.0%	1,121	12.2%	2,405	26.1%	2,378	25.8%	2,391	25.9%	9,216
2008	1,478	13.7%	1,212	11.3%	2,833	26.3%	2,672	24.8%	2,585	24.0%	10,780
2009	906	8.3%	1,451	13.3%	3,088	28.2%	2,909	26.6%	2,578	23.6%	10,932
2010	618	5.5%	1,679	15.1%	3,326	29.9%	2,949	26.5%	2,568	23.1%	11,140
2011	386	3.6%	1,658	15.5%	3,353	31.3%	2,820	26.3%	2,486	23.2%	10,703
2012	297	3.0%	1,605	16.1%	3,236	32.5%	2,560	25.7%	2,256	22.7%	9,954

Source: The Los Angeles Community College District Office Student Information System (SIS).

* Before 1991, Concurrent High School students were included in "19 and under" counts.



Ethnicity Distribution



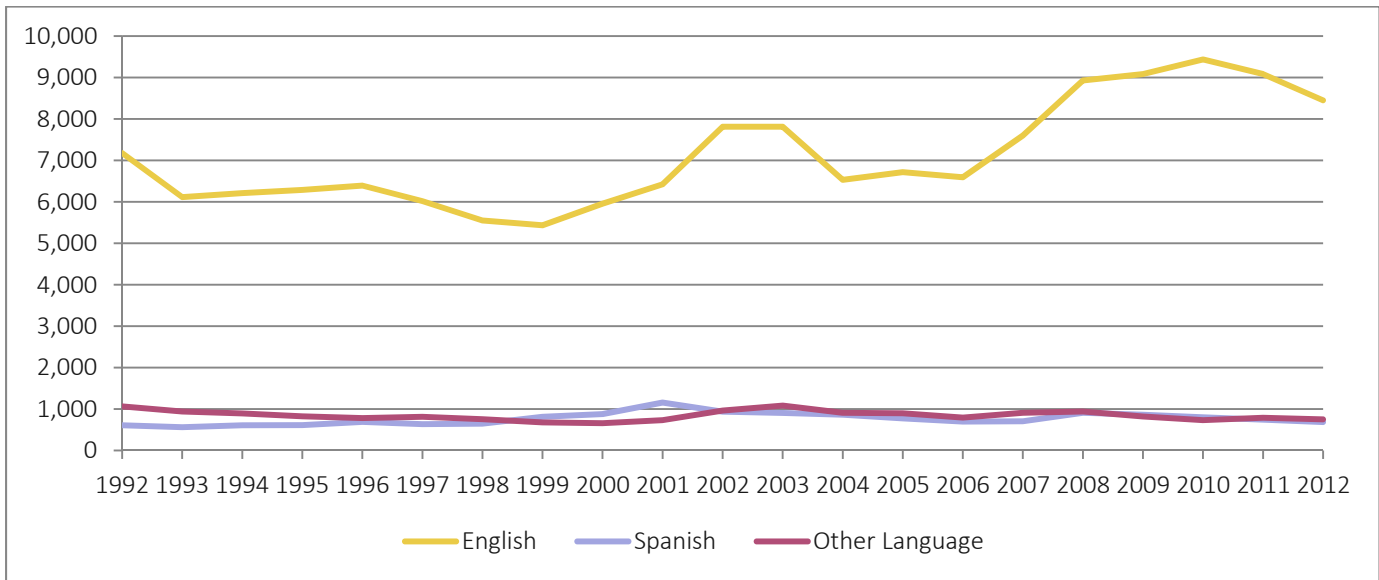
Fall Term	Asian/ Pacific Islander		Black/ African American		Hispanic / Latino		White		Multi-Ethnic		Other		Total
1972	198	4.0%	1,660	33.5%	203	4.1%	2,779	56.1%			114	2.3%	4,954
1975	447	5.7%	3,591	45.5%	388	4.9%	3,254	41.2%			213	2.7%	7,893
1980	969	8.3%	5,825	50.0%	720	6.2%	3,791	32.6%			335	2.9%	11,640
1985	539	8.4%	3,221	50.0%	491	7.6%	1,962	30.5%			223	3.5%	6,436
1990	1,008	10.4%	4,851	50.1%	1,209	12.5%	2,336	24.1%			273	2.8%	9,677
1991	1,071	11.0%	5,076	52.0%	1,368	14.0%	2,034	20.8%			219	2.2%	9,768
1992	974	11.0%	4,699	53.1%	1,253	14.2%	1,731	19.6%			194	2.2%	8,852
1993	808	10.6%	4,092	53.7%	1,188	15.6%	1,321	17.3%			208	2.7%	7,617
1994	788	10.2%	4,227	54.8%	1,249	16.2%	1,255	16.3%			198	2.6%	7,716
1995	739	9.6%	4,303	55.7%	1,289	16.7%	1,201	15.5%			195	2.5%	7,727
1996	725	9.2%	4,345	55.2%	1,453	18.5%	1,113	14.1%			233	3.0%	7,869
1997	724	9.7%	4,138	55.4%	1,386	18.6%	1,037	13.9%			181	2.4%	7,466
1998	662	9.5%	3,852	55.4%	1,370	19.7%	894	12.9%			177	2.5%	6,955
1999	693	10.0%	3,753	54.2%	1,393	20.1%	882	12.7%			207	3.0%	6,927
2000	625	8.3%	3,938	52.5%	1,721	23.0%	977	13.0%			237	3.2%	7,499
2001	757	9.1%	3,967	47.7%	2,121	25.5%	1,175	14.1%			293	3.5%	8,313
2002	912	9.4%	4,724	48.6%	2,351	24.2%	1,432	14.7%			300	3.1%	9,718
2003	985	10.0%	4,537	46.3%	2,497	25.5%	1,481	15.1%			304	3.1%	9,804
2004	779	9.4%	3,855	46.4%	2,297	27.7%	1,117	13.4%			258	3.1%	8,305
2005	851	10.1%	3,804	45.3%	2,241	26.7%	1,252	14.9%			242	2.9%	8,390
2006	786	9.7%	3,607	44.6%	2,268	28.0%	1,206	14.9%			221	2.7%	8,088
2007	889	9.6%	4,178	45.3%	2,459	26.7%	1,375	14.9%			314	3.4%	9,216
2008	1,015	9.4%	4,682	43.4%	3,264	30.3%	1,477	13.7%			342	3.2%	10,780
2009	916	9.4%	4,133	42.5%	2,794	28.7%	1,492	15.3%	207	2.1%	184	1.9%	9,726
2010	831	8.2%	4,268	42.1%	3,396	33.5%	1,519	15.0%	74	0.7%	42	0.4%	10,130
2011	730	7.4%	4,038	40.9%	3,585	36.3%	1,395	14.1%	95	1.0%	32	0.3%	9,875
2012	634	6.8%	3,446	36.9%	3,814	40.8%	1,336	14.3%	89	1.0%	29	0.3%	9,348

Note: Totals exclude unknowns. The question about Ethnicity was modified starting Fall 2009.
Source: The Los Angeles Community College District Office Student Information System (SIS).



Demographics

Primary Language Distribution



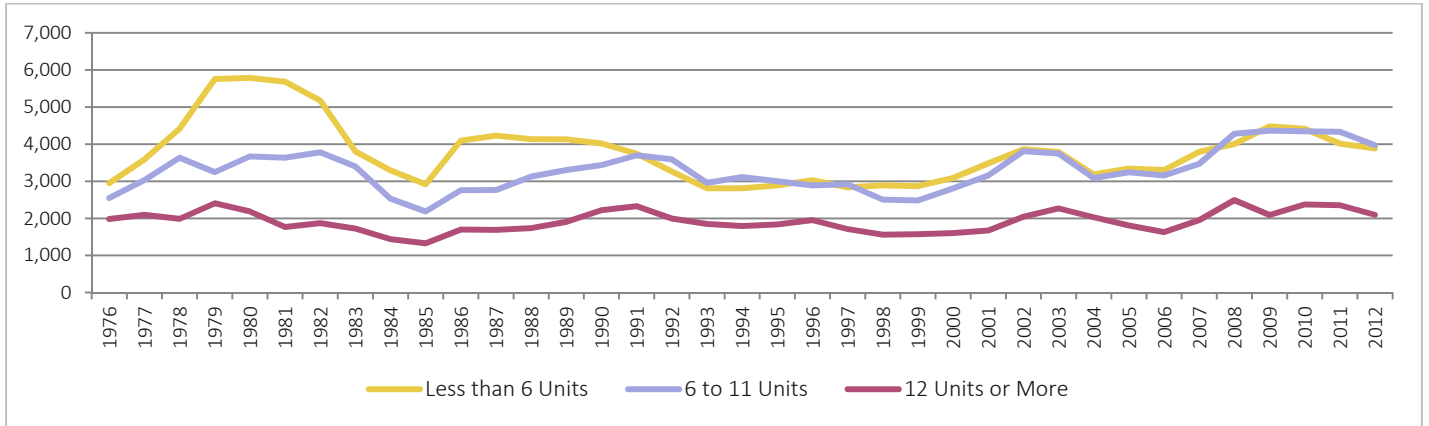
Fall	English		Spanish		Other Language		Total
1992	7,178	81.1%	609	6.9%	1,066	12.0%	8,852
1993	6,115	80.3%	562	7.4%	940	12.3%	7,617
1994	6,211	80.5%	610	7.9%	895	11.6%	7,716
1995	6,289	81.4%	613	7.9%	825	10.7%	7,727
1996	6,394	81.3%	692	8.8%	783	10.0%	7,869
1997	6,017	80.6%	635	8.5%	814	10.9%	7,466
1998	5,552	79.8%	646	9.3%	758	10.9%	6,955
1999	5,436	78.5%	813	11.7%	678	9.8%	6,927
2000	5,957	79.4%	881	11.7%	661	8.8%	7,499
2001	6,425	77.3%	1,156	13.9%	732	8.8%	8,313
2002	7,815	80.4%	938	9.6%	966	9.9%	9,718
2003	7,813	79.7%	907	9.2%	1,084	11.1%	9,804
2004	6,532	78.7%	863	10.4%	910	11.0%	8,305
2005	6,716	80.0%	774	9.2%	900	10.7%	8,390
2006	6,594	81.5%	700	8.6%	794	9.8%	8,088
2007	7,601	82.5%	705	7.7%	910	9.9%	9,216
2008	8,929	82.8%	910	8.4%	941	8.7%	10,780
2009	9,084	84.4%	864	8.0%	820	7.6%	10,768
2010	9,435	86.0%	804	7.3%	732	6.7%	10,971
2011	9,085	85.6%	743	7.0%	790	7.4%	10,618
2012	8,452	85.4%	687	6.9%	753	7.6%	9,892

Note: Totals exclude unknowns. The question about Primary Language was added to the application for Admission in Fall 1992.
Source: The Los Angeles Community College District Office Student Information System (SIS).



Demographics

Unit Load Student Enrollment Distribution



Fall	Less than 6 Units		6 to 11 Units		12 Units or More		Total
1980	5,786	49.7%	3,668	31.5%	2,185	18.8%	11,640
1985	2,920	45.4%	2,188	34.0%	1,328	20.6%	6,436
1990	4,020	41.5%	3,437	35.5%	2,221	22.9%	9,677
1991	3,744	38.3%	3,698	37.9%	2,326	23.8%	9,768
1992	3,264	36.9%	3,590	40.6%	1,998	22.6%	8,852
1993	2,811	36.9%	2,959	38.8%	1,848	24.3%	7,617
1994	2,811	36.4%	3,112	40.3%	1,794	23.2%	7,716
1995	2,889	37.4%	3,001	38.8%	1,837	23.8%	7,727
1996	3,026	38.5%	2,888	36.7%	1,955	24.8%	7,869
1997	2,836	38.0%	2,918	39.1%	1,711	22.9%	7,466
1998	2,890	41.6%	2,505	36.0%	1,560	22.4%	6,955
1999	2,868	41.4%	2,484	35.9%	1,575	22.7%	6,927
2000	3,086	41.2%	2,808	37.4%	1,605	21.4%	7,499
2001	3,482	41.9%	3,158	38.0%	1,673	20.1%	8,313
2002	3,863	39.8%	3,812	39.2%	2,043	21.0%	9,718
2003	3,790	38.7%	3,745	38.2%	2,268	23.1%	9,804
2004	3,185	38.3%	3,089	37.2%	2,031	24.5%	8,305
2005	3,343	39.8%	3,241	38.6%	1,806	21.5%	8,390
2006	3,304	40.8%	3,157	39.0%	1,627	20.1%	8,088
2007	3,794	41.2%	3,469	37.6%	1,953	21.2%	9,216
2008	4,005	37.2%	4,281	39.7%	2,494	23.1%	10,780
2009	4,480	41.0%	4,363	39.9%	2,089	19.1%	10,932
2010	4,417	39.6%	4,348	39.0%	2,375	21.3%	11,140
2011	4,015	37.5%	4,333	40.5%	2,355	22.0%	10,703
2012	3,887	39.0%	3,971	39.9%	2,096	21.1%	9,954

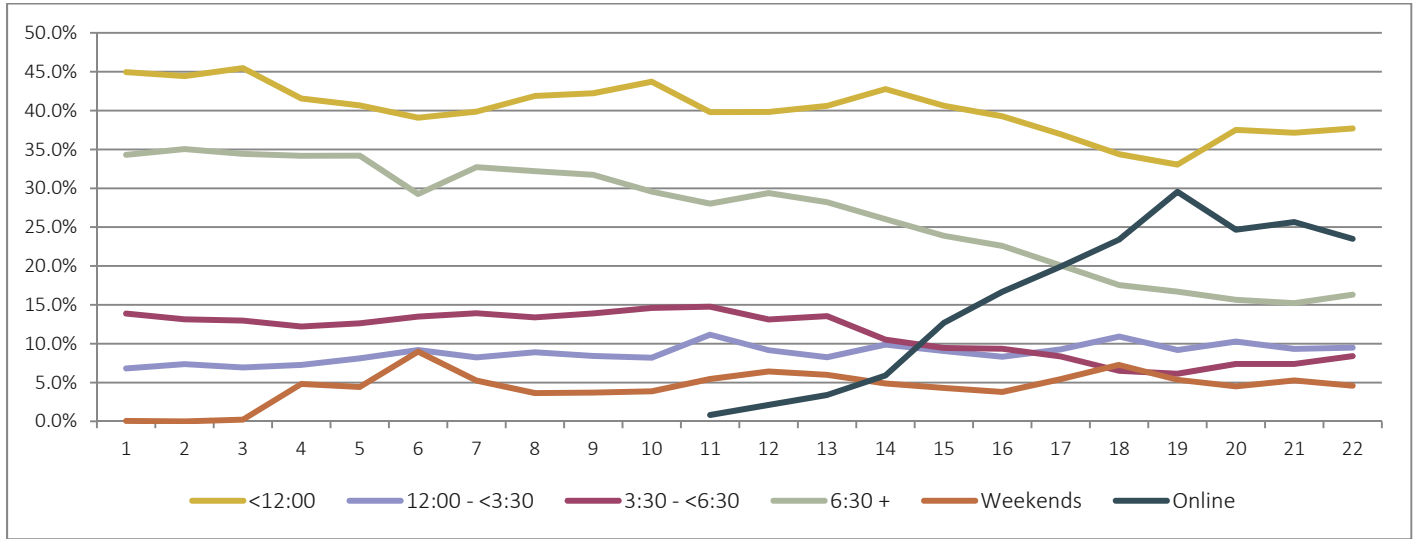
Note: Student course load is the number of units in which a student is enrolled; used for determining full-time/part-time status.

Source: The Los Angeles Community College District Office Student Information System (SIS).



Demographics

Enrollment Distribution by Time of Day



Fall	<12:00	12:00 - <3:30	3:30 - <6:30	6:30 +	Weekends	Online
1991	45.0%	6.8%	13.9%	34.3%	0.1%	
1992	44.4%	7.4%	13.1%	35.1%	0.0%	
1993	45.5%	6.9%	13.0%	34.4%	0.2%	
1994	41.5%	7.3%	12.2%	34.2%	4.8%	
1995	40.7%	8.1%	12.6%	34.2%	4.4%	
1996	39.1%	9.2%	13.5%	29.3%	9.0%	
1997	39.9%	8.2%	13.9%	32.7%	5.3%	
1998	41.9%	8.9%	13.4%	32.2%	3.6%	
1999	42.2%	8.4%	13.9%	31.7%	3.7%	
2000	43.7%	8.2%	14.6%	29.6%	3.9%	
2001	39.8%	11.2%	14.8%	28.0%	5.4%	0.8%
2002	39.8%	9.2%	13.1%	29.4%	6.4%	2.1%
2003	40.6%	8.3%	13.6%	28.2%	6.0%	3.4%
2004	42.8%	9.9%	10.5%	26.0%	4.9%	5.9%
2005	40.6%	9.1%	9.5%	23.9%	4.3%	12.7%
2006	39.3%	8.3%	9.3%	22.6%	3.8%	16.7%
2007	37.0%	9.3%	8.4%	20.1%	5.4%	19.9%
2008	34.4%	10.9%	6.5%	17.5%	7.3%	23.4%
2009	33.0%	9.2%	6.1%	16.7%	5.4%	29.5%
2010	37.5%	10.3%	7.4%	15.7%	4.5%	24.7%
2011	37.1%	9.3%	7.4%	15.2%	5.3%	25.7%
2012	37.7%	9.5%	8.4%	16.3%	4.6%	23.5%

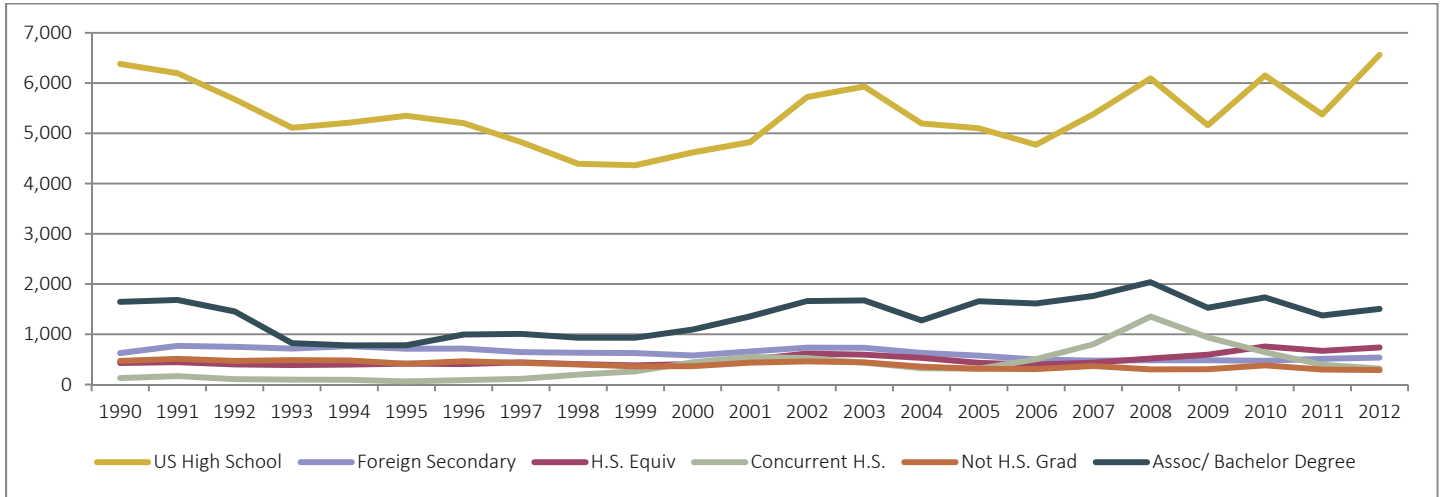
Note: Totals exclude TBAs.

Source: The Los Angeles Community College District Office Student Information System (SIS).



Demographics

Prior Education



Fall	US High School		Foreign Secondary		H.S. Equiv		Concurrent H.S.		Not H.S. Grad		Assoc/ Bachelor Degree		Total
1990	6,381	65.9%	625	6.5%	428	4.4%	129	1.3%	469	4.8%	1,645	17.0%	9,677
1991	6,197	63.4%	769	7.9%	445	4.6%	166	1.7%	510	5.2%	1,682	17.2%	9,768
1992	5,676	64.1%	750	8.5%	399	4.5%	105	1.2%	469	5.3%	1,453	16.4%	8,852
1993	5,111	67.1%	715	9.4%	388	5.1%	96	1.3%	485	6.4%	822	10.8%	7,617
1994	5,211	67.5%	762	9.9%	395	5.1%	93	1.2%	478	6.2%	777	10.1%	7,716
1995	5,348	69.2%	710	9.2%	416	5.4%	61	0.8%	412	5.3%	781	10.1%	7,727
1996	5,203	66.1%	715	9.1%	406	5.2%	86	1.1%	464	5.9%	995	12.6%	7,869
1997	4,828	64.7%	646	8.6%	440	5.9%	111	1.5%	432	5.8%	1,009	13.5%	7,466
1998	4,394	63.2%	630	9.1%	404	5.8%	196	2.8%	400	5.8%	931	13.4%	6,955
1999	4,366	63.0%	625	9.0%	381	5.5%	263	3.8%	360	5.2%	932	13.5%	6,927
2000	4,619	61.6%	577	7.7%	408	5.4%	440	5.9%	362	4.8%	1,093	14.6%	7,499
2001	4,825	58.0%	657	7.9%	494	5.9%	550	6.6%	433	5.2%	1,355	16.3%	8,313
2002	5,723	58.9%	735	7.6%	615	6.3%	526	5.4%	460	4.7%	1,659	17.1%	9,718
2003	5,933	60.5%	729	7.4%	593	6.0%	434	4.4%	442	4.5%	1,674	17.1%	9,804
2004	5,197	62.6%	629	7.6%	530	6.4%	321	3.9%	353	4.3%	1,274	15.3%	8,305
2005	5,100	60.8%	575	6.9%	430	5.1%	312	3.7%	314	3.7%	1,658	19.8%	8,390
2006	4,772	59.0%	499	6.2%	394	4.9%	504	6.2%	305	3.8%	1,614	20.0%	8,088
2007	5,381	58.4%	475	5.1%	432	4.7%	801	8.7%	366	4.0%	1,761	19.1%	9,216
2008	6,095	56.5%	482	4.5%	518	4.8%	1,351	12.5%	299	2.8%	2,035	18.9%	10,780
2009	5,162	57.3%	481	5.3%	594	6.6%	938	10.4%	302	3.4%	1,528	17.0%	9,005
2010	6,151	60.7%	473	4.7%	756	7.5%	641	6.3%	379	3.7%	1,734	17.1%	10,134
2011	5,375	62.4%	511	5.9%	668	7.8%	391	4.5%	298	3.5%	1,375	16.0%	8,618
2012	6,564	66.0%	535	5.4%	737	7.4%	316	3.2%	288	2.9%	1,503	15.1%	9,943

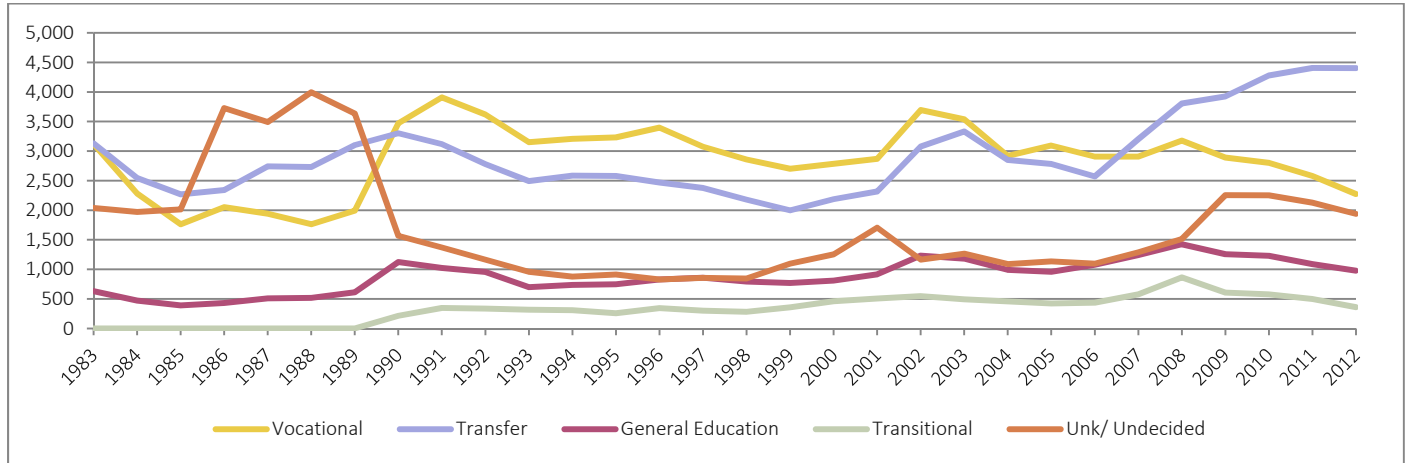
Note: Totals exclude unknowns.

Source: The Los Angeles Community College District Office Student Information System (SIS).



Demographics

Educational Goal



Fall	Vocational		Transfer		General Education		Transitional		Unk/ Undecided		Total
1985	1,763	27.4%	2,269	35.3%	391	6.1%	0	0.0%	2,013	31.3%	6,436
1990	3,471	35.9%	3,303	34.1%	1,122	11.6%	214	2.2%	1,566	16.2%	9,677
1991	3,909	40.0%	3,119	31.9%	1,024	10.5%	347	3.5%	1,369	14.0%	9,768
1992	3,620	40.9%	2,779	31.4%	955	10.8%	335	3.8%	1,163	13.1%	8,852
1993	3,150	41.4%	2,494	32.7%	699	9.2%	316	4.1%	959	12.6%	7,617
1994	3,209	41.6%	2,585	33.5%	736	9.5%	308	4.0%	878	11.4%	7,716
1995	3,232	41.8%	2,579	33.4%	746	9.7%	258	3.3%	912	11.8%	7,727
1996	3,397	43.2%	2,470	31.4%	829	10.5%	344	4.4%	829	10.5%	7,869
1997	3,075	41.2%	2,378	31.8%	857	11.5%	301	4.0%	855	11.5%	7,466
1998	2,859	41.1%	2,178	31.3%	793	11.4%	281	4.0%	843	12.1%	6,955
1999	2,702	39.0%	1,999	28.9%	770	11.1%	358	5.2%	1,097	15.8%	6,927
2000	2,786	37.2%	2,188	29.2%	811	10.8%	461	6.1%	1,253	16.7%	7,499
2001	2,869	34.5%	2,317	27.9%	915	11.0%	506	6.1%	1,706	20.5%	8,313
2002	3,695	38.0%	3,079	31.7%	1,232	12.7%	547	5.6%	1,165	12.0%	9,718
2003	3,537	36.1%	3,332	34.0%	1,179	12.0%	493	5.0%	1,263	12.9%	9,804
2004	2,917	35.1%	2,851	34.3%	990	11.9%	458	5.5%	1,089	13.1%	8,305
2005	3,094	36.9%	2,781	33.2%	957	11.4%	423	5.0%	1,135	13.5%	8,390
2006	2,906	35.9%	2,571	31.8%	1,079	13.3%	435	5.4%	1,097	13.6%	8,088
2007	2,906	31.5%	3,203	34.8%	1,242	13.5%	576	6.2%	1,289	14.0%	9,216
2008	3,177	29.5%	3,805	35.3%	1,423	13.2%	863	8.0%	1,512	14.0%	10,780
2009	2,891	26.4%	3,924	35.9%	1,255	11.5%	606	5.5%	2,256	20.6%	10,932
2010	2,801	25.1%	4,280	38.4%	1,230	11.0%	577	5.2%	2,252	20.2%	11,140
2011	2,581	24.1%	4,408	41.2%	1,088	10.2%	498	4.7%	2,128	19.9%	10,703
2012	2,274	22.8%	4,404	44.2%	977	9.8%	360	3.6%	1,939	19.5%	9,954

Note: The Major Goal Categories tallied above are inclusive of the following responses to the goal question on the Application for Admission:
Vocational includes: Preparing New Career (Old Category = Job Skills); Advance in Job/Career; Discover Career Goals Maintain License, Vocational Degree without Transfer; and Vocational Certificate without Transfer.
Transfer includes: Transfer with Degree and Transfer without Degree.
General Education includes: Associate Degree without Transfer and Personal Enrichment.
Transitional includes: Improve Basic Skills and Complete High School Diploma.

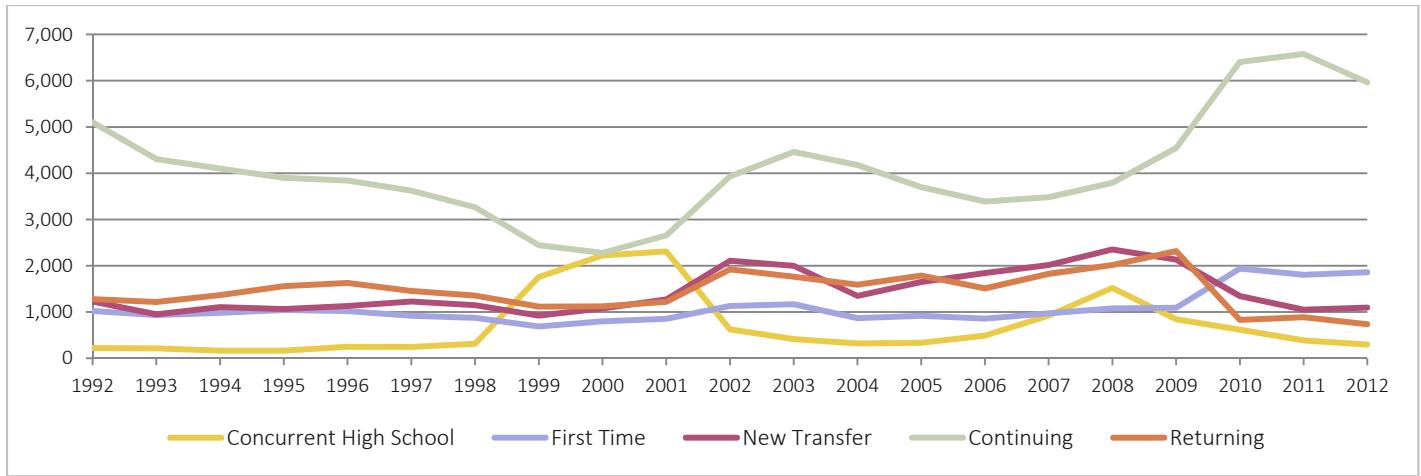
Source: The Los Angeles Community College District Office Student Information System (SIS).



Demographics

Semester Status

Fall 1972 - Fall 2012



Fall	Concurrent High School		First Time		New Transfer		Continuing		Returning		Total
1992	222	2.5%	1,024	11.6%	1,227	13.9%	5,102	57.6%	1,278	14.4%	8,852
1993	213	2.8%	932	12.2%	951	12.5%	4,306	56.5%	1,215	15.9%	7,617
1994	165	2.1%	981	12.7%	1,104	14.3%	4,101	53.2%	1,364	17.7%	7,716
1995	164	2.1%	1,043	13.5%	1,063	13.8%	3,899	50.5%	1,558	20.2%	7,727
1996	247	3.1%	1,020	13.0%	1,131	14.4%	3,843	48.8%	1,628	20.7%	7,869
1997	243	3.3%	918	12.3%	1,226	16.4%	3,625	48.5%	1,454	19.5%	7,466
1998	315	4.5%	873	12.6%	1,146	16.5%	3,265	46.9%	1,357	19.5%	6,955
1999	1,757	25.4%	688	9.9%	921	13.3%	2,445	35.3%	1,116	16.1%	6,927
2000	2,223	29.6%	797	10.6%	1,078	14.4%	2,279	30.4%	1,121	15.0%	7,499
2001	2,310	27.8%	853	10.3%	1,272	15.3%	2,657	32.0%	1,221	14.7%	8,313
2002	627	6.4%	1,129	11.6%	2,110	21.7%	3,932	40.5%	1,921	19.8%	9,718
2003	415	4.2%	1,168	11.9%	1,999	20.4%	4,460	45.5%	1,762	18.0%	9,804
2004	321	3.9%	867	10.4%	1,348	16.2%	4,177	50.3%	1,591	19.2%	8,305
2005	334	4.0%	921	11.0%	1,649	19.6%	3,701	44.1%	1,786	21.3%	8,390
2006	489	6.0%	857	10.6%	1,842	22.8%	3,389	41.9%	1,511	18.7%	8,088
2007	922	10.0%	970	10.5%	2,016	21.9%	3,483	37.8%	1,826	19.8%	9,216
2008	1,520	14.1%	1,078	10.0%	2,350	21.8%	3,795	35.2%	2,016	18.7%	10,780
2009	842	7.7%	1,093	10.0%	2,132	19.5%	4,548	41.6%	2,318	21.2%	10,932
2010	618	5.5%	1,939	17.4%	1,344	12.1%	6,406	57.5%	830	7.5%	11,137
2011	386	3.6%	1,804	16.9%	1,049	9.8%	6,577	61.5%	887	8.3%	10,703
2012	297	3.0%	1,859	18.7%	1,096	11.0%	5,965	59.9%	735	7.4%	9,954

Note: Totals exclude unknowns.

Source: The Los Angeles Community College District Office Student Information System (SIS).

