

WEST LOS ANGELES COLLEGE - FALL 2014
MATH 105 - SYLLABUS - SECTIONS 1454

Math is fun 😊

ARITHMETIC
Instructor: Manushak Movsisyan

TIME & ROOM: MW: 1:00 PM–2:25 PM, MSA 202

REQUIRED MATERIALS

- Textbook: *Basic College Mathematics: An Applied Approach*, by Aufmann, Barker & Lockwood, 7th edition. ISBN 10: [0618202854](#) / ISBN 13: [9780618202850](#). You should be able to rent it from the bookstore for about \$7 (with a credit or debit card, even if you pay cash). You might be able to buy a used copy online at about the same cost.
- Your math notebook (with graph paper), pencils, and the textbook to class each day.
- No Calculator (no cells or graphing calculators are allowed on any assessments in class)

COUSE DESCRIPTIONS: This course is designed to give the student an understanding of and a competency in the basic operations of elementary arithmetic. Topics include operations with whole numbers, common and decimal fractions, percentages, and simplified calculations.

IMPORTANT DATES:

Refund and Add Deadline, September 12th
Last days to drop without a “W”, September 12th
Last day to drop with a “W”, November 21th
Final Exam, December 18th



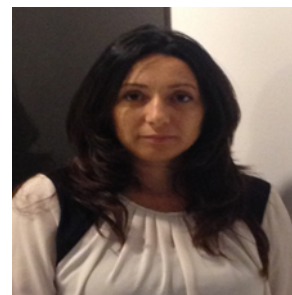
HOMEWORK

be graded on apparent effort with two hours per day as the standard. You must show your work. The odd answers can be found at the back of your text. You are encouraged to collaborate with one another on the homework.

Homework will be assigned daily, and it is expected to be completed daily. However, it will be collected on exam days before you begin the exam. A reasonably complete assignment will be given 10 points. Your homework will

Welcome to Math 105 Class!

My teaching philosophy is that with hard work, determination, and discipline all students can succeed. I am committed to offer all students the proper tools to be successful in this course! I am excited to be your instructor for the next 16 weeks.



What to contact me?

Feel free to drop by my office to ask questions or just chat. You are guaranteed to find me at **MSB 203**.

MW: 2:30 PM-3:30 PM

Th: 1:00 PM-2:30 PM

and

T: 1:00 PM-2:30 PM in the Learning Resource Center

Email: movsism@wla.edu

Phone: 310-287-4235

ATTENDANCE: We have a lot of material to cover and understand, so regular attendance is crucial to your success in the class. Please come on time and stay for the duration of the class. If you cannot attend regularly, on time, and stay for the entire class; you should take this class at another time that fits your schedule. Students arriving late or leaving early, without authorization from the instructor may be marked tardy. Three recorded tardies will count as one absence. Excessive absences (3 or more prior to the drop deadline) may result in being dropped from the class. However, it is your responsibility to drop the class if you stop attending.

GROUPWORK POLICY: Group problem solving is a method of instruction for this class. You will work in groups of 2 or 3 each class meeting on an assignment. At the end of the class all of the papers will be collected, but only one paper from each group will be graded. Everyone in the group will receive the same score. Each group-work assignment is worth up to 10 points. If you have to leave class early, you will receive a zero for that day's work. You must work in a group, or your paper will not be graded. There will be no make-ups for group work. I reserve the right to break up groups for any reason.

EXAMS: There will be 4 tests worth 55% of your grade in the class. Don't miss them! NO MAKE-UP TESTS WILL BE GIVEN! If you know in advance that you will miss an exam, then it is possible to arrange to take it in advance, but no exam will be given after the class has taken it. The final exam score may replace the first missed exam.

QUIZZES:

- Quizzes will be given weekly throughout the semester. Roughly 2-5 problems from previously discussed lecture and/or homework will be on each quiz.
- *Do not miss them! No makeup quizzes will be given under any circumstances*

CLASSROOM CONDUCT:

- I like my classes to have a fun, encouraging environment. I expect you to come to class with a commitment to learn, take good notes and participate in discussions and classwork. I like group learning in my class. I expect my students to work together and encourage each other.



**Please
Turn off Your
Mobile Phones**

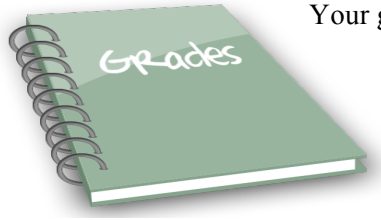
- Phones cannot be used during class even as a calculator to check your answer.



**NO
FOOD/DRINK**
Sorry for the inconvenience.

(except bottled water)

- All students are expected to arrive on time and stay for the duration of the class period. Late arrivals are disruptive to both the lecturer and students.
- Do not talk in class while lecture is in progress. Talking to the person next to you disrupts the whole class. Respect other students who have questions.
- Penalties for cheating range from a zero on an exam to dismissal from the course and/or the College. You should review College's policy on academic dishonesty outlined in the schedule of classes.
- No guests are allowed in class.



Your grade will be computed the following way:

Test scores	55%
Homework assignments	10%
Classwork and daily quizzes	10%
Final Exam	25%

GRADING SCALE:

90%-100%	A
80%-89%	B
70%-79%	C
60%-69%	D
59% and below	F

MATH LAB/GETTING HELP: I would like to encourage you to take advantage of my office hours. Learning Resource Center offers daily free tutoring and is located in the Library. To enhance your chances of success in this course make a commitment to spend at least 8 hours on course material per week outside class time, come to class daily, participate, keep an open mind, and stay positive.

STUDENTS WITH DISABILITIES: Students with disabilities who believe they may need accommodations in this class are encouraged to contact Disabled Students Programs and Services located in SSB 320 (phone 310-287-4450) immediately to improve the chances that such accommodations can be implemented in a timely manner. The instructor will do everything possible to comply with ADA and all other mandates.

STUDENT LEARNING OUTCOMES:

- Use rounding and estimation in applications of arithmetic.
- Add, subtract, multiply, and divide fractions and mixed numbers and decimal numbers.

Lecture OUTLINE

-----Fall 2014-----

SUBJECT: Math 105

INSTRUCTOR: Manushak Movsisyan

This schedule is tentative. It is subject to change.

Week 1	9/1 <i>LABOR DAY</i>	9/2	9/3 Introduction; 1.1	9/5
Week 2	9/8 1.2-1.3	9/9	9/10 1.4-1.5	9/11
Week 3	9/15 1.6-1.7	9/16	9/17 Review	9/18
Week 4	9/22 Test-1/ CH 1	9/23	9/24 2.1-2.2	9/25
Week 5	9/29 2.2-2.3	9/30	10/1 2.4	10/2
Week 6	10/6 2.5-2.6	10/7	10/8 2.7	10/9
Week 7	10/13 2.8	10/14	10/15 Review	10/16
Week 8	10/20 Test-2/ CH 2	10/21	10/22 3.1-3.3	10/23
Week 9	10/27 3.4-3.5	10/28	10/29 3.6	10/30
Week 10	11/3 Review	11/4	11/5 Test-3/ CH 3	11/6
Week 11	11/10 4.1-4.2	11/11	11/12 4.3	11/13
Week 12	11/17 Review	11/18	11/19 5.1-5.2	11/20
Week 13	11/24 5.3-5.4	11/25	11/26 5.5 & 6.1	11/27 <i>THANKSGIVING</i>
Week 14	12/1 Test-4/ CH 4,5&6	12/2	12/3 Review	12/4
Week 15	12/8 Review for Final	12/9	12/10 Review for Final	12/11
Week 16	12/15 FINAL EXAM 1:45pm-3:45pm	12/16	12/17	12/18