



S. AISHA CORNEAL, MIT



Interpreter

Contact Information:  
E-Mail: corneas@lattc.edu  
V-Mail: 323-682-4000  
Drop In: 15 Minutes after class

Course: Section 3246,  
Tuesday / Thursday  
Class Hours: 6:45 pm—9:20 pm  
Room: FA 306

COURSE DESCRIPTION: Prerequisite – NONE.

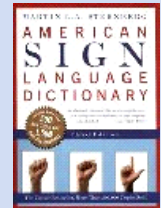
This is an introductory course designed to develop basic vocabulary and grammar towards the development of conversational skills. Students will use the manual alphabet, learn grammatical rules of American Sign Language, and use basic sign language to communicate. Emphasis is placed on receptive and comprehension skills, beginning conversational skills, and incorporates vital aspects of the Deaf culture and community. Over the course of the semester, students will complete 18 - 21 hours of lab/homework for this course.



REQUIRED RESOURCES



- ▶ Textbook: *Signing Naturally: Student Workbook, Units 1-6 (Book & DVDs)* by Smith, Lentz, and Mikos - Paperback 2008, Dawn Sign Press ISBN: 978-1-58121-210-5
- ▶ Dictionary: *American Sign Language – Abridged Edition* Author: Martin L.A. Sternberg ISBN: 0-06-273634-5
- ▶ Two Scantrons - 882-E, Number 2 Pencil, DVD Player and Video capabilities



STUDENT LEARNING OUTCOMES

The Student Will:

As Measured By:

Distinguish between Deaf and Hearing Culture through observations, quizzes, Deaf Culture Reflection Paper

70 % expected minimum level of competency demonstrated through Mid-Term and Final Exam.

Student will prepare and present a Formal ASL Presentation incorporating expressive and receptive ASL language skills.

The Presentation and Analysis Rubric. 70 % expected minimum level of competency demonstrated through expressive demonstration of language skills.



ACCOMODATIONS: Students with disabilities must self-identify by contacting the Disabled Students Program Services (DSPS) office. The DSPS is office is available for Students who need assistance or accommodations. Register and bring the accommodations letter to the instructor.

LAST DATE TO . . .

Add: 09/06; Drop - w/Refund & no "W": 09/06; Drop w/ "W": 11/15

## STANDARDS OF STUDENT CONDUCT

Students are expected to adhere to the Standards of Student Conduct – Board Rules - adopted by LACCD as printed in the schedule of classes and the college catalog. As a reminder, no children/visitors, recording – audio, photo, video, cell phones or laptop devices (i.e., PC, tablet, Galaxy, iPad, iPhone, etc.) shall be used by students during class without express permission from the instructor. Usage of these technological tools during class, prohibit sign language communication activities/behaviors, and prevent you and others from acquiring the lessons during class. These devices, especially phones, are to be placed on vibrate and put away - out of sight. Students who have phones that ring, disrupting class, will be warned once. Use of phones and other devices during class will incur the user a loss of 5 points each occurrence and/or dismissal from class. If it is important to take a call during class, please step outside of the classroom.

## PARTICIPATION

Participation in class activities is crucial to your success in this class. The class forms a small community and your effort or lack of, impacts the success of the group. Be prepared to participate in your learning process.

**Please, make every effort to come to and participate in each class session.**

**GRADING:** Grades are based on a GRADING POINT SCALE. Students earn points for completing quizzes, tests, assignments, observations, and for class participation. At the discretion of the instructor, “bonus opportunities” may be made available for students to earn additional points. The Student is responsible for maintaining copies of all assignments, and keeping their own Grade Log to calculate points to ensure all grades are posted.

## ASSIGNMENTS AND FILENAME CONVENTIONS

Assignments are to be submitted neat, complete, and follow outlined format. There will be homework following every class, anywhere from 1 to 2 hours of work, and it is not to be completed during class. It is important that you do each homework assignment because each assignment builds on the material covered and on the next session.

All assignments are due on the date designated whether reviewed in class, handed in or requested as an online submission. Homework that is to be brought to class, will be submitted and/or reviewed at the beginning of class, and will not accepted thereafter. If an assignment is requested to be submitted online, it is due (time-stamped) no less than one-hour prior to class, but may be submitted earlier. Please submit these assignments as an MSWord document, or as a video (whichever is most appropriate). Submit these assignments as ATTACHMENTS to the instructor’s email address using the Filename convention is as follows:

**COLLEGE-LASTNAME\_FIRSTNAME-FILENAME**

Example: **LASC-Corneal\_Aisha-PreUnit.doc**

Students are responsible for maintaining the Point Log with all graded assignments until the Final Exam is administered. This syllabus is a guide, and every attempt is made to provide an accurate overview of the course. However, circumstances and events may make it necessary for modification of the Course Syllabus and/or the *Schedule of Unit Sessions* during the semester. Announcements regarding changes to these documents will be made in class. If changes are required, Students will be responsible for updating these documents.

## NO LATE OR MAKE-UP ASSIGNMENTS

***Because the skills in this course build, one assignment on the next...***

***LATE or MAKE-UP ASSIGNMENTS***

***WILL NOT BE ACCEPTED.***

Homework follows each session’s lesson. The *Schedule of Unit Sessions* outlines the units and lessons that this class will cover. To avoid receiving a zero for arriving after the homework is collected/reviewed (at the beginning of class) or by being absent and not submitting homework, it is acceptable to ask your class Study Buddy to submit your assignment so that they will be accepted on time.

***MAKE-UP EXAMS***

The Written portions of the MID- TERM and/or FINAL EXAMS may only be made-up if the absence is due to extraordinary circumstances (i.e., obituary, medical note, or school administrator). Appropriate documentation must be provided.

## GRADING AND ASSIGNMENTS

Students are expected to arrive to class on-time and remain until the end of class. Arriving 15 minutes after class begins or leaving prior to the end of class, without excuse or prior arrangements; equals one tardy. Four tardies is equivalent to one absence. Students that arrive late, during quizzes or tests, will be allowed to join the testing, but will not be provided with an opportunity to make-up information missed due to their tardiness. Absence due to family emergency (i.e., death, illness) must be verified with documentation, and may be excused for a Student to do/submit an allowable make-up assignment.

# ASSIGNMENTS AND POINTS

**GRADING POINT SCALE: Points Possible: 310**

**A = 310 – 298**

**B = 297 – 283**

**C = 282 – 266**

**D = 265 – 250**

**F = 249 - Below**

| Assignment  | Comments   | Possible   | Grade Log |  |     |  |
|---|--|------------|-----------|--|-----|--|
|   | Bonus Opportunities                                  | TBD        |           |  |     |  |
| <b>Pre-Unit</b>   | Deaf Culture Quiz                                    | 6.25       |           |  |     |  |
| <b>Deaf Culture</b>   | Deaf Reflection                                      | 9.00       |           |  |     |  |
|   | Observation Journal                                  | 15.00      |           |  |     |  |
| <b>Lessons/Sessions</b>   | <b>Unit 1</b>  | 0.00       |           |  |     |  |
| (Possible Points:<br>Sessions: .25 per question<br>Assignments: 1 per question) | 1.1 Strategies for Learning: First Month             | 4.00       |           |  | 1.1 |  |
|   | 1.2 Write the Number; 1.3 Circle the Letter          | 5.00       | 1.2       |  | 1.3 |  |
|   | 1.6 Write the Number; 1.7 Write the Name             | 5.25       | 1.6       |  | 1.7 |  |
|   | 1.8 Mini-dialogues; 1.9 See and Draw                 | 8.25       | 1.8       |  | 1.9 |  |
|   | 1.11 Picture It                                      | 3.00       | 1.11      |  |     |  |
|   | <b>Unit 2</b>  | 0.00       |           |  |     |  |
|   | 1.1 Strategies for Learning – Second Month           | 4.00       |           |  |     |  |
|   | 2.1 Mini-dialogues; 2.2 Write the Number             | 5.25       |           |  |     |  |
|   | 2.4 Language Background 2; 2.6 Who Enjoys What       | 2.5        |           |  |     |  |
|   | 2.7 Write the Number; 2.8 Describing Shapes          | 4.5        |           |  |     |  |
|   | 2.9 Mini-dialogues; 2.9 Names and Tidbits            | 3.5        |           |  |     |  |
|   | 2.10 Write the Name                                  | 2          |           |  |     |  |
|   | <b>Unit 3</b>  | 0.00       |           |  |     |  |
|   | 1.1 Strategies for Learning – Third Month            | 4.00       |           |  |     |  |
|   | 3.2 ASSIGNMENT: Two Commands                         | 2.00       |           |  |     |  |
|   | 3.5 Mini-dialogues; 3.7 Identify and Draw            | 3.5        |           |  |     |  |
|   | 3.8 How Many of What; 3.9 Mini-dialogues             | 6.75       |           |  |     |  |
|   | 3.10 Expressing Needs; 3.12 Mini-dialogues           | 6.75       |           |  |     |  |
|   | 3.15 What is the Sign;                               | 1.5        |           |  |     |  |
|   | <b>Unit 4</b>  | 0.00       |           |  |     |  |
|   | 1.1 Strategies for Learning – Fourth Month           | 4.00       |           |  |     |  |
|   | 4.1 Mini-dialogues; 4.3 Write the Number             | 5.25       |           |  |     |  |
|   | 4.5 Mini-dialogues; 4.7 How Old                      | 9.75       |           |  |     |  |
|   | 4.8 Mini-dialogues; 4.9 What's the Relationship      | 5.25       |           |  |     |  |
|   | 4.10 ASSIGNMENT: Six Negative Questions              | 6          |           |  |     |  |
|   | 4.13 David's Keys; 4.14 Commenting on Family Matters | 7.75       |           |  |     |  |
| <b>MID-TERM</b>   | Comprehensive  | 50         |           |  |     |  |
| <b>FINAL EXAM</b>   | Video Presentation                                   | 30         |           |  |     |  |
|   | Comprehensive  | 70         |           |  |     |  |
| <b>Participation</b>  | Class/Group Participation                            | 20         |           |  |     |  |
|   | <b>TOTAL POSSIBLE POINTS</b>                         | <b>310</b> |           |  |     |  |