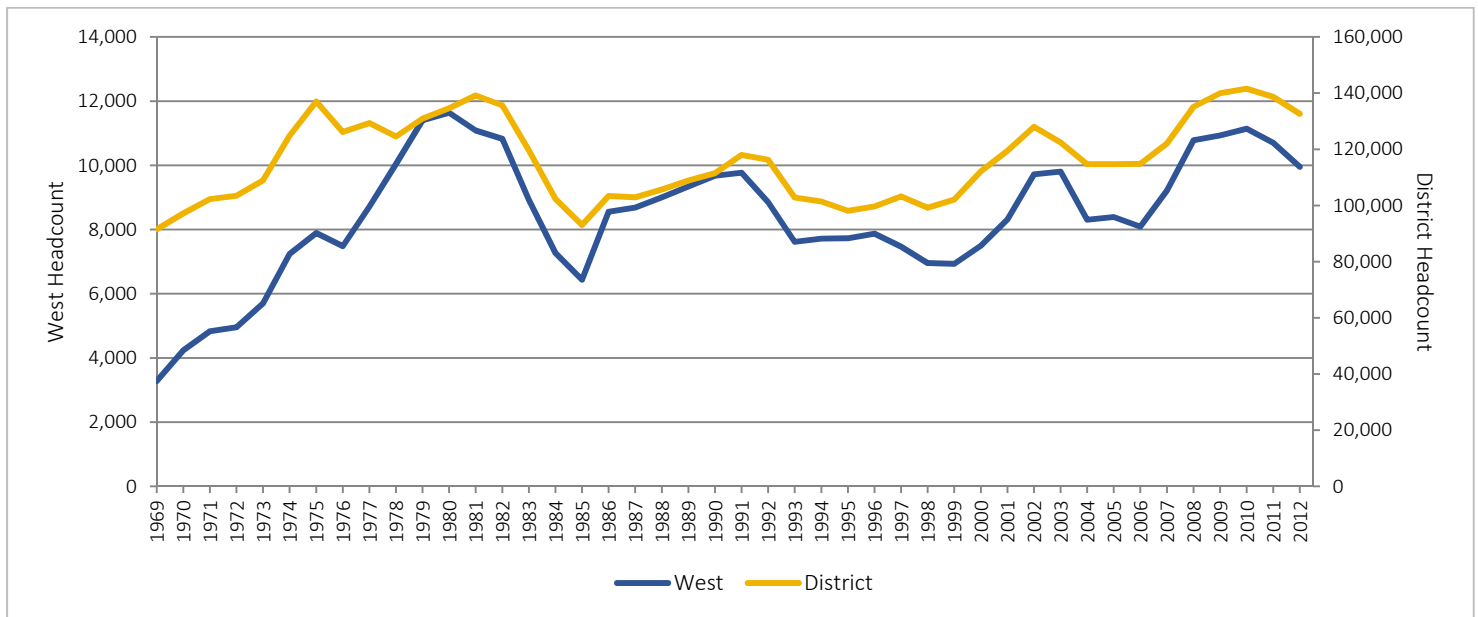




Student Demographics & Enrollment

Credit Census Headcount, Fall 1969 - Fall 2014



Fall Term	West	Percent Change	District
1969	3,282		91,469
1970	4,239	29.2%	97,176
1971	4,832	14.0%	102,256
1972	4,954	2.5%	103,456
1973	5,700	15.1%	108,922
1974	7,240	27.0%	124,839
1975	7,893	9.0%	137,031
1976	7,483	-5.2%	126,143
1977	8,712	16.4%	129,296
1978	10,041	15.3%	124,523
1979	11,407	13.6%	130,896
1980	11,640	2.0%	134,622
1981	11,085	-4.8%	139,168
1982	10,825	-2.3%	135,644
1983	8,921	-17.6%	119,569
1984	7,268	-18.5%	102,313
1985	6,436	-11.4%	93,026
1986	8,553	32.9%	103,336
1987	8,682	1.5%	102,912
1988	9,003	3.7%	105,678
1989	9,341	3.8%	108,880
1990	9,677	3.6%	111,485
1991	9,768	0.9%	117,994

Fall Term	West	Percent Change	District
1992	8,852	-9.4%	116,251
1993	7,617	-14.0%	102,800
1994	7,716	1.3%	101,378
1995	7,727	0.1%	98,104
1996	7,869	1.8%	99,654
1997	7,466	-5.1%	103,251
1998	6,955	-6.8%	99,165
1999	6,927	-0.4%	102,075
2000	7,499	8.3%	112,155
2001	8,313	10.9%	119,433
2002	9,718	16.9%	128,013
2003	9,804	0.9%	122,441
2004	8,305	-15.3%	114,681
2005	8,390	1.0%	114,701
2006	8,088	-3.6%	114,777
2007	9,261	13.9%	122,060
2008	10,780	17.0%	135,103
2009	10,932	1.4%	139,990
2010	11,140	1.9%	141,586
2011	10,703	-3.9%	138,652
2012	9,954	-7.0%	132,601
2013	10,284	3.32%	135,960
2014	10,032	-2.45%	135,599

Note: Headcount is the number of individual students (unduplicated).
Source: The Los Angeles Community College District Office Student Information System (SIS).

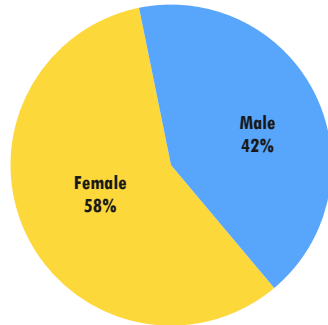


Student Profile

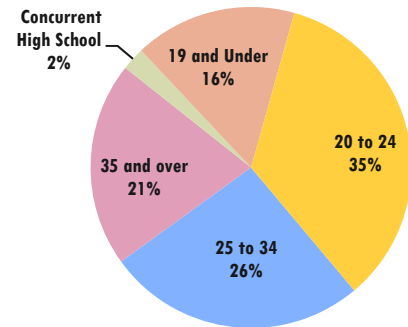
Fall 2014 Student Characteristics

Headcount 10,032

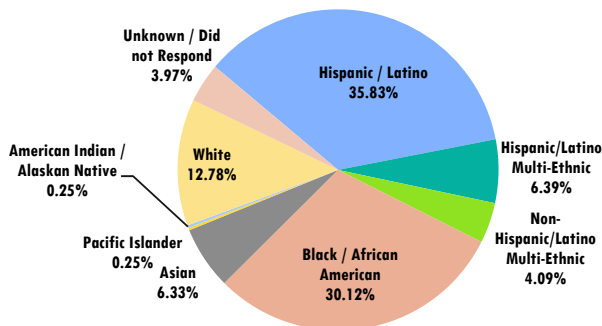
Gender



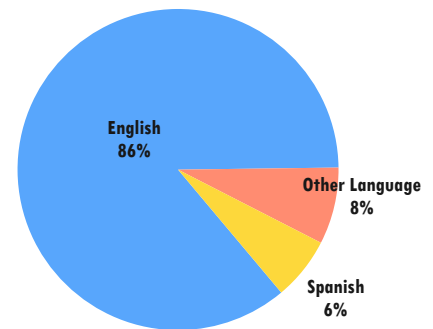
Age



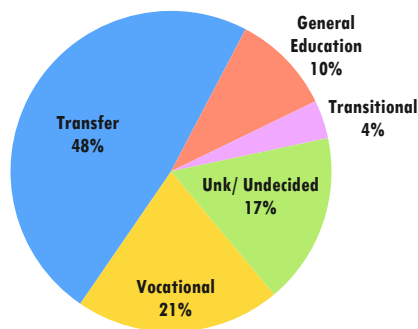
Race / Ethnicity



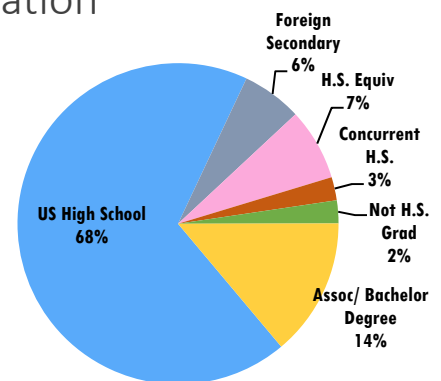
Primary Language



Educational Goal



Prior Education

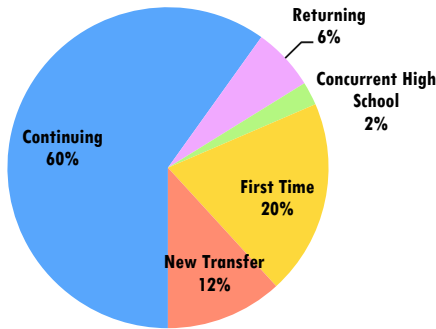


Source: The Los Angeles Community College District Office Student Information System (SIS).

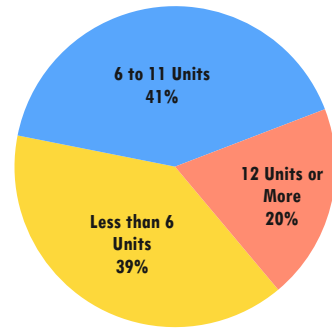
Fall 2014 Student Characteristics

Headcount 10,032

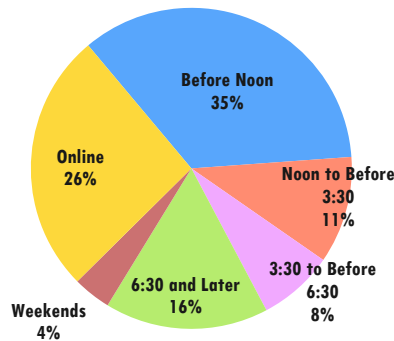
Semester Status



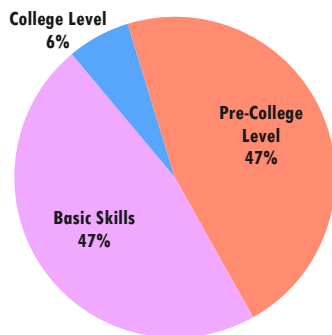
Full Time-Part Time Student Enrollment (Unit Load)



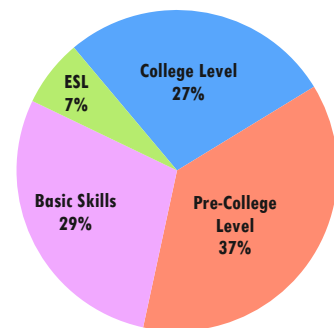
Enrollment by Time of Day



Math Placement Level



English/ESL Placement Level



Source: The Los Angeles Community College District Office Student Information System (SIS).



Student Profile

Fall 2014 Student Demographic Cross-Tabulations

Number of Students
Percentage of Row Category
Percentage of Column Category
Percentage of All

Gender by Age *Largest Subgroup: Females, 20 to 24 years of age (1,864 students, 18.6% of Grand Total)*

	Concurrent High School	19 and Under	20 to 24	25 to 34	35 to 49	50 and Over	Total
Female	109	819	1,864	1,649	921	448	5,810
	1.90%	14.10%	32.10%	28.40%	15.90%	7.70%	100.00%
	46.40%	49.90%	53.80%	62.90%	67.60%	63.30%	57.90%
Male	126	822	1,600	973	441	260	4,222
	3.00%	19.50%	37.90%	23.00%	10.40%	6.20%	100.00%
	53.60%	50.10%	46.20%	37.10%	32.40%	36.70%	42.10%
Total	235	1,641	3,464	2,622	1,362	708	10,032
	2.30%	16.40%	34.50%	26.10%	13.60%	7.10%	100.00%
	100.00%	100.00%	100.00%	100.00%	100.00%	100.00%	100.00%
	2.3%	16.4%	34.5%	26.1%	13.6%	7.1%	100.0%

Gender by Ethnicity *Largest Subgroup: Hispanic/Latina Females (2,064 students, 20.6% of Grand Total)*

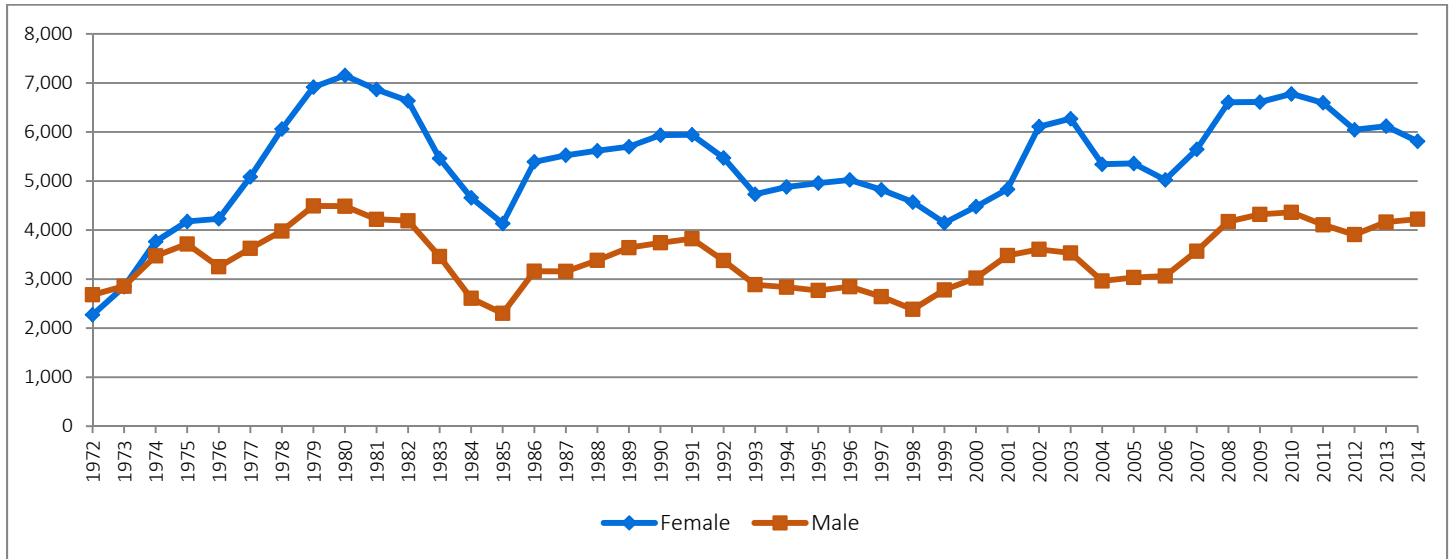
	American Indian / Alaskan Native	Asian	Black / African American	Hispanic / Latino	Hispanic / Latino Multi-Ethnic	Non-Hispanic / Latino Multi-Ethnic	Pacific Islander	Unknown / Did not Respond	White	Total
Female	15	326	1,816	2,064	354	259	10	242	724	5,810
	0.3%	5.6%	31.3%	35.5%	6.1%	4.5%	0.2%	4.2%	12.5%	100.0%
	60.0%	51.3%	60.1%	57.4%	55.2%	63.2%	40.0%	60.8%	56.5%	57.9%
Male	10	309	1,206	1,530	287	151	15	156	558	4,222
	0.2%	7.3%	28.6%	36.2%	6.8%	3.6%	0.4%	3.7%	13.2%	100.0%
	40.0%	48.7%	39.9%	42.6%	44.8%	36.8%	60.0%	39.2%	43.5%	42.1%
Total	25	635	3,022	3,594	641	410	25	398	1,282	10,032
	0.3%	6.3%	30.1%	35.8%	6.4%	4.1%	0.3%	4.0%	12.8%	100.0%
	100.0%	100.0%	100.0%	100.0%	100.0%	100.0%	100.0%	100.0%	100.0%	100.0%
	0.3%	6.3%	30.1%	35.8%	6.4%	4.1%	0.3%	4.0%	12.8%	100.0%

Age by Ethnicity *Largest Subgroup: Hispanic/Latino/a students, 20 to 24 years of age (1,437 students, 14.3% of Grand Total)*

	American Indian / Alaskan Native	Asian	Black / African American	Hispanic / Latino	Hispanic / Latino Multi-Ethnic	Non-Hispanic / Latino Multi-Ethnic	Pacific Islander	Unknown / Did not Respond	White	Total
Concurrent High School	1	8	63	116	4	8	1	5	29	235
	0.4%	3.4%	26.8%	49.4%	1.7%	3.4%	0.4%	2.1%	12.3%	100.0%
	4.0%	1.3%	2.1%	3.2%	0.6%	2.0%	4.0%	1.3%	2.3%	2.3%
	0.0%	0.1%	0.6%	1.2%	0.0%	0.1%	0.0%	0.1%	0.3%	2.3%
19 and Under	2	54	487	768	108	62	4	30	126	1,641
	0.1%	3.3%	29.7%	46.8%	6.6%	3.8%	0.2%	1.8%	7.7%	100.0%
	8.0%	8.5%	16.1%	21.4%	16.9%	15.1%	16.0%	7.5%	9.8%	16.4%
	0.0%	0.5%	4.9%	7.7%	1.1%	0.6%	0.0%	0.3%	1.3%	16.4%
20 to 24	6	243	883	1,437	251	160	8	110	366	3,464
	0.2%	7.0%	25.5%	41.5%	7.3%	4.6%	0.2%	3.2%	10.6%	100.0%
	24.0%	38.3%	29.2%	40.0%	39.2%	39.0%	32.0%	27.6%	28.6%	34.5%
	0.1%	2.4%	8.8%	14.3%	2.5%	1.6%	0.1%	1.1%	3.7%	34.5%
25 to 34	9	199	724	883	194	120	6	96	391	2,622
	0.3%	7.6%	27.6%	33.7%	7.4%	4.6%	0.2%	3.7%	14.9%	100.0%
	36.0%	31.3%	24.0%	24.6%	30.3%	29.3%	24.0%	24.1%	30.5%	26.1%
	0.1%	2.0%	7.2%	8.8%	1.9%	1.2%	0.1%	1.0%	3.9%	26.1%
35 to 49	5	90	532	316	66	42	4	78	229	1,362
	0.4%	6.6%	39.1%	23.2%	4.9%	3.1%	0.3%	5.7%	16.8%	100.0%
	20.0%	14.2%	17.6%	8.8%	10.3%	10.2%	16.0%	19.6%	17.9%	13.6%
	0.1%	0.9%	5.3%	3.2%	0.7%	0.4%	0.0%	0.8%	2.3%	13.6%
50 and Over	2	41	333	74	18	18	2	79	141	708
	0.3%	5.8%	47.0%	10.5%	2.5%	2.5%	0.3%	11.2%	19.9%	100.0%
	8.0%	6.5%	11.0%	2.1%	2.8%	4.4%	8.0%	19.9%	11.0%	7.1%
	0.0%	0.4%	3.3%	0.7%	0.2%	0.2%	0.0%	0.8%	1.4%	7.1%
Total	25	635	3,022	3,594	641	410	25	398	1,282	10,032
	0.3%	6.3%	30.1%	35.8%	6.4%	4.1%	0.3%	4.0%	12.8%	100.0%
	100.0%	100.0%	100.0%	100.0%	100.0%	100.0%	100.0%	100.0%	100.0%	100.0%
	0.3%	6.3%	30.1%	35.8%	6.4%	4.1%	0.3%	4.0%	12.8%	100.0%

Source: The Los Angeles Community College District Office Student Information System (SIS).

Gender Distribution



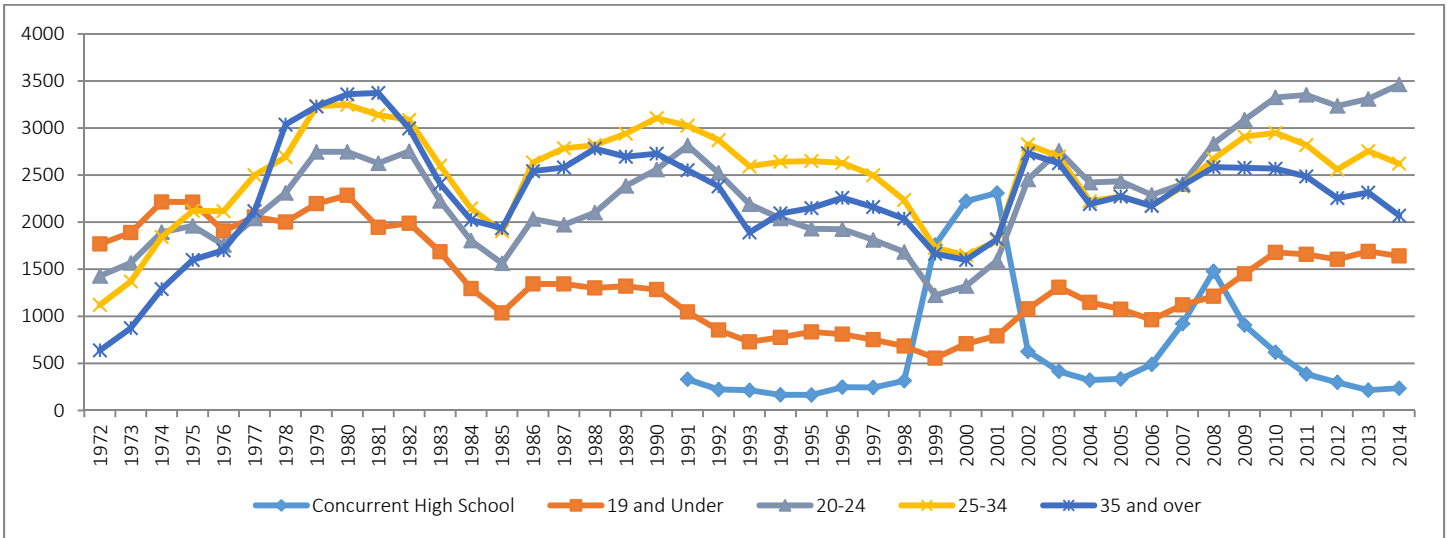
Fall	Female		Male		Total
1972	2,273	45.88%	2,681	54.12%	4,954
1975	4,177	52.92%	3,716	47.08%	7,893
1980	7,153	61.45%	4,487	38.55%	11,640
1985	4,134	64.23%	2,302	35.77%	6,436
1990	5,936	61.34%	3,741	38.66%	9,677
1991	5,943	60.84%	3,825	39.16%	9,768
1992	5,472	61.82%	3,380	38.18%	8,852
1993	4,731	62.12%	2,886	37.88%	7,617
1994	4,880	63.25%	2,836	36.75%	7,716
1995	4,959	64.17%	2,768	35.83%	7,727
1996	5,023	63.83%	2,846	36.17%	7,869
1997	4,823	64.60%	2,643	35.40%	7,466
1998	4,572	65.73%	2,383	34.27%	6,955
1999	4,147	59.87%	2,780	40.13%	6,927
2000	4,478	59.71%	3,021	40.29%	7,499
2001	4,832	58.12%	3,481	41.88%	8,313
2002	6,110	62.88%	3,608	37.12%	9,718
2003	6,271	63.96%	3,533	36.04%	9,804
2004	5,342	64.32%	2,963	35.68%	8,305
2005	5,357	63.85%	3,033	36.15%	8,390
2006	5,025	62.13%	3,063	37.87%	8,088
2007	5,646	61.26%	3,570	38.74%	9,216
2008	6,606	61.28%	4,174	38.72%	10,780
2009	6,611	60.50%	4,321	39.50%	10,932
2010	6,777	60.80%	4,363	39.20%	11,140
2011	6,595	61.60%	4,108	38.40%	10,703
2012	6,046	60.70%	3,908	39.30%	9,954
2013	6,120	60.00%	4,163	40.00%	10,284
2014	5,810	58.00%	4,222	42.00%	10,032

Source: The Los Angeles Community College District Office Student Information System (SIS).



Demographic Trends

Age Distribution

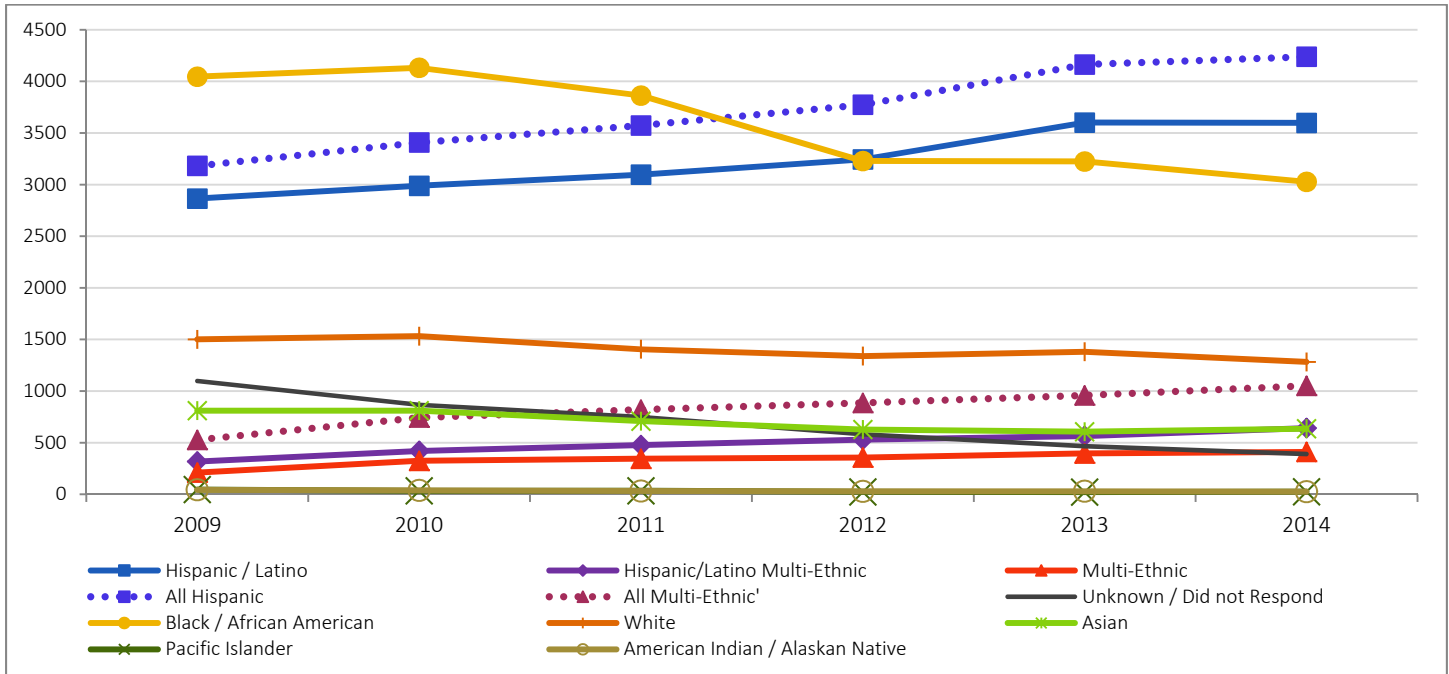


Fall	Concurrent High School*		19 and Under*		20-24		25-34		35 and over		Total
1972			1,768	35.7%	1,428	28.8%	1,121	22.6%	638	12.9%	4,954
1975			2,213	28.0%	1,960	24.8%	2,121	26.9%	1,599	20.3%	7,893
1980			2,285	19.6%	2,748	23.6%	3,248	27.9%	3,359	28.9%	11,640
1985			1,036	16.1%	1,562	24.3%	1,902	29.6%	1,936	30.1%	6,436
1990			1,283	13.3%	2,560	26.5%	3,106	32.1%	2,728	28.2%	9,677
1991	329	3.4%	1,045	10.7%	2,815	28.8%	3,025	31.0%	2,553	26.1%	9,768
1992	222	2.5%	854	9.6%	2,524	28.5%	2,873	32.5%	2,380	26.9%	8,852
1993	213	2.8%	728	9.6%	2,190	28.8%	2,594	34.1%	1,891	24.8%	7,617
1994	165	2.1%	776	10.1%	2,039	26.4%	2,642	34.2%	2,093	27.1%	7,716
1995	164	2.1%	834	10.8%	1,930	25.0%	2,649	34.3%	2,150	27.8%	7,727
1996	247	3.1%	809	10.3%	1,925	24.5%	2,630	33.4%	2,259	28.7%	7,869
1997	243	3.3%	751	10.1%	1,812	24.3%	2,498	33.5%	2,161	29.0%	7,466
1998	315	4.5%	683	9.8%	1,684	24.2%	2,236	32.1%	2,037	29.3%	6,955
1999	1,757	25.4%	555	8.0%	1,223	17.7%	1,728	25.0%	1,664	24.0%	6,927
2000	2,223	29.7%	708	9.4%	1,321	17.6%	1,647	22.0%	1,599	21.3%	7,499
2001	2,310	27.8%	791	9.5%	1,591	19.1%	1,803	21.7%	1,818	21.9%	8,313
2002	627	6.5%	1,079	11.1%	2,454	25.3%	2,827	29.1%	2,732	28.1%	9,718
2003	415	4.2%	1,308	13.3%	2,758	28.1%	2,696	27.5%	2,627	26.8%	9,804
2004	321	3.9%	1,148	13.8%	2,420	29.1%	2,223	26.8%	2,192	26.4%	8,305
2005	334	4.0%	1,075	12.8%	2,435	29.0%	2,273	27.1%	2,273	27.1%	8,390
2006	489	6.0%	963	11.9%	2,291	28.3%	2,173	26.9%	2,173	26.9%	8,088
2007	922	10.0%	1,121	12.2%	2,405	26.1%	2,378	25.8%	2,391	25.9%	9,216
2008	1,478	13.7%	1,212	11.3%	2,833	26.3%	2,672	24.8%	2,585	24.0%	10,780
2009	906	8.3%	1,451	13.3%	3,088	28.2%	2,909	26.6%	2,578	23.6%	10,932
2010	618	5.5%	1,679	15.1%	3,326	29.9%	2,949	26.5%	2,568	23.1%	11,140
2011	386	3.6%	1,658	15.5%	3,353	31.3%	2,820	26.3%	2,486	23.2%	10,703
2012	297	3.0%	1,605	16.1%	3,236	32.5%	2,560	25.7%	2,256	22.7%	9,954
2013	215	2.09%	1,689	16.42%	3,310	32.19%	2,755	26.79%	2,315	22.51%	10,284
2014	235	2.34%	1,641	16.36%	3,464	34.53%	2,622	26.14%	2,070	20.63%	10,032

Source: The Los Angeles Community College District Office Student Information System (SIS).

* Before 1991, Concurrent High School students were included in "19 and under" counts.

Ethnicity Distribution



	Hispanic / Latino		Hispanic/Latino Multi-Ethnic		Non-Hispanic/Latino Multi-Ethnic		Black / African American		White		Asian		Pacific Islander		American Indian / Alaskan Native		Unknown / Did not Respond		Total
2009	2,864	26.20%	317	2.90%	210	1.92%	4,045	37.00%	1,500	13.72%	810	7.41%	46	0.42%	43	0.39%	1,097	10.03%	10,932
2010	2,988	26.82%	419	3.76%	324	2.91%	4,131	37.08%	1,531	13.74%	810	7.27%	33	0.30%	37	0.33%	867	7.78%	11,140
2011	3,096	28.93%	476	4.45%	344	3.21%	3,862	36.08%	1,405	13.13%	708	6.61%	34	0.32%	31	0.29%	747	6.98%	10,703
2012	3,244	32.59%	529	5.31%	356	3.58%	3,228	32.43%	1,338	13.44%	627	6.30%	23	0.23%	28	0.28%	581	5.84%	9,954
2013	3,600	35.01%	563	5.47%	395	3.84%	3,224	31.35%	1,380	13.42%	606	5.89%	21	0.20%	29	0.28%	466	4.53%	10,284
2014	3,597	35.86%	641	6.39%	410	4.09%	3,027	30.17%	1,282	12.78%	635	6.33%	25	0.25%	25	0.25%	390	3.89%	10,032

Note: The question about Ethnicity was modified starting Fall 2009.

Ethnic Groups presented are aggregations of various categories into which students self-identify.

HISPANIC/LATINO Cluster includes students who self-identify as Mexican, Mexican-American, Chicano, Central American, South American, Other Hispanic, Hispanic, Latino or any combination.

ASIAN Cluster includes students who self-identify as Indian, Chinese, Japanese, Korean, Laotian, Cambodian, Vietnamese, Filipino, Other Asian, or any combination.

PACIFIC ISLANDER Cluster includes students who identify as Guamanian, Hawaiian, Samoan, Pacific Islander Other, or any combination.

BLACK/AFRICAN AMERICAN, WHITE, and AMERICAN INDIAN/ALASKAN NATIVE includes students who self-identify only in those respective categories.

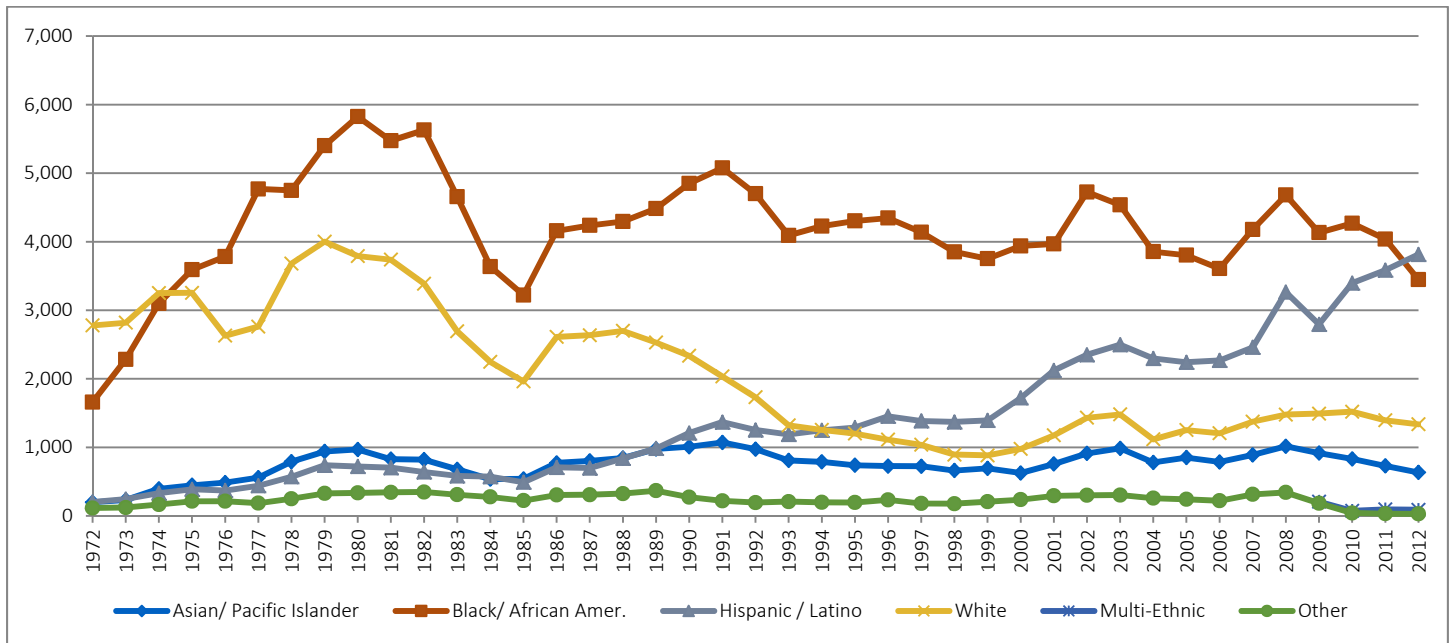
HISPANIC/LATINO MULTI-ETHNIC includes students who self-identify into the Hispanic/Latino cluster and any other cluster.

Source: The Los Angeles Community College District Office Student Information System (SIS).



Demographic Trends

Historical Ethnicity Distribution

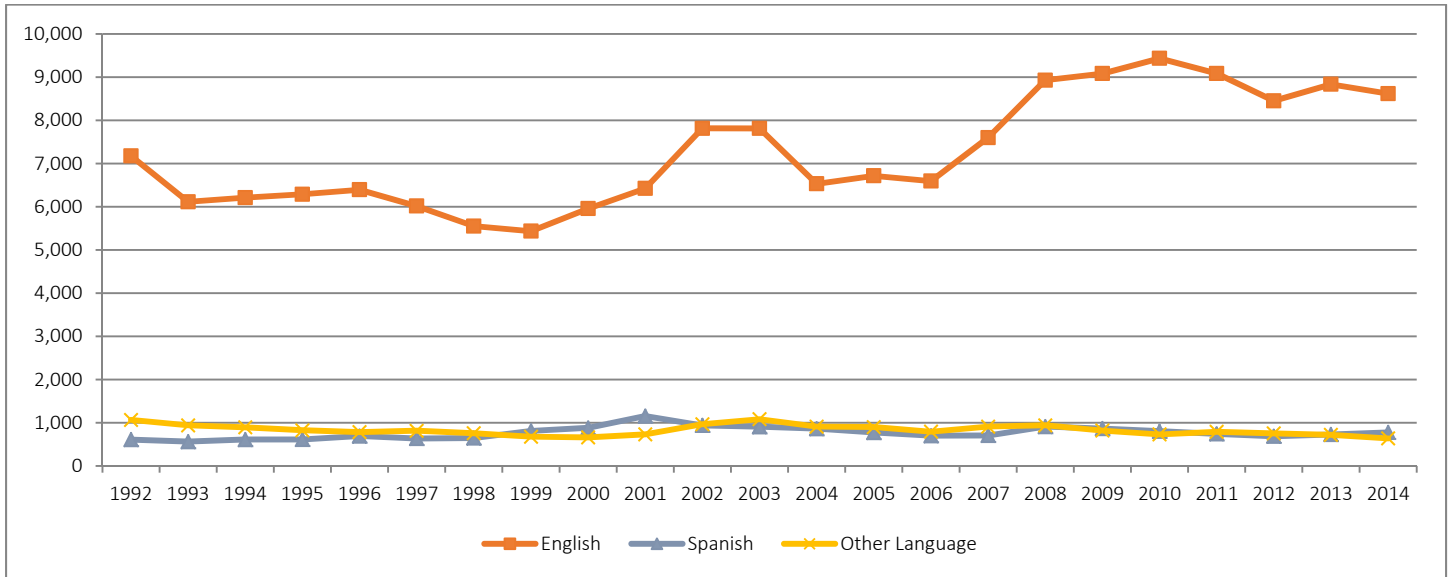


Fall Term	Asian/ Pacific Islander	Black/ African American	Hispanic / Latino	White	Other	Total
1972	198 4.0%	1,660 33.5%	203 4.1%	2,779 56.1%	114 2.3%	4,954
1975	447 5.7%	3,591 45.5%	388 4.9%	3,254 41.2%	213 2.7%	7,893
1980	969 8.3%	5,825 50.0%	720 6.2%	3,791 32.6%	335 2.9%	11,640
1985	539 8.4%	3,221 50.0%	491 7.6%	1,962 30.5%	223 3.5%	6,436
1990	1,008 10.4%	4,851 50.1%	1,209 12.5%	2,336 24.1%	273 2.8%	9,677
1991	1,071 11.0%	5,076 52.0%	1,368 14.0%	2,034 20.8%	219 2.2%	9,768
1992	974 11.0%	4,699 53.1%	1,253 14.2%	1,731 19.6%	194 2.2%	8,852
1993	808 10.6%	4,092 53.7%	1,188 15.6%	1,321 17.3%	208 2.7%	7,617
1994	788 10.2%	4,227 54.8%	1,249 16.2%	1,255 16.3%	198 2.6%	7,716
1995	739 9.6%	4,303 55.7%	1,289 16.7%	1,201 15.5%	195 2.5%	7,727
1996	725 9.2%	4,345 55.2%	1,453 18.5%	1,113 14.1%	233 3.0%	7,869
1997	724 9.7%	4,138 55.4%	1,386 18.6%	1,037 13.9%	181 2.4%	7,466
1998	662 9.5%	3,852 55.4%	1,370 19.7%	894 12.9%	177 2.5%	6,955
1999	693 10.0%	3,753 54.2%	1,393 20.1%	882 12.7%	207 3.0%	6,927
2000	625 8.3%	3,938 52.5%	1,721 23.0%	977 13.0%	237 3.2%	7,499
2001	757 9.1%	3,967 47.7%	2,121 25.5%	1,175 14.1%	293 3.5%	8,313
2002	912 9.4%	4,724 48.6%	2,351 24.2%	1,432 14.7%	300 3.1%	9,718
2003	985 10.0%	4,537 46.3%	2,497 25.5%	1,481 15.1%	304 3.1%	9,804
2004	779 9.4%	3,855 46.4%	2,297 27.7%	1,117 13.4%	258 3.1%	8,305
2005	851 10.1%	3,804 45.3%	2,241 26.7%	1,252 14.9%	242 2.9%	8,390
2006	786 9.7%	3,607 44.6%	2,268 28.0%	1,206 14.9%	221 2.7%	8,088
2007	889 9.6%	4,178 45.3%	2,459 26.7%	1,375 14.9%	314 3.4%	9,216
2008	1,015 9.4%	4,682 43.4%	3,264 30.3%	1,477 13.7%	342 3.2%	10,780

Note: The question about Ethnicity was modified starting Fall 2009.

Source: The Los Angeles Community College District Office Student Information System (SIS).

Primary Language Distribution



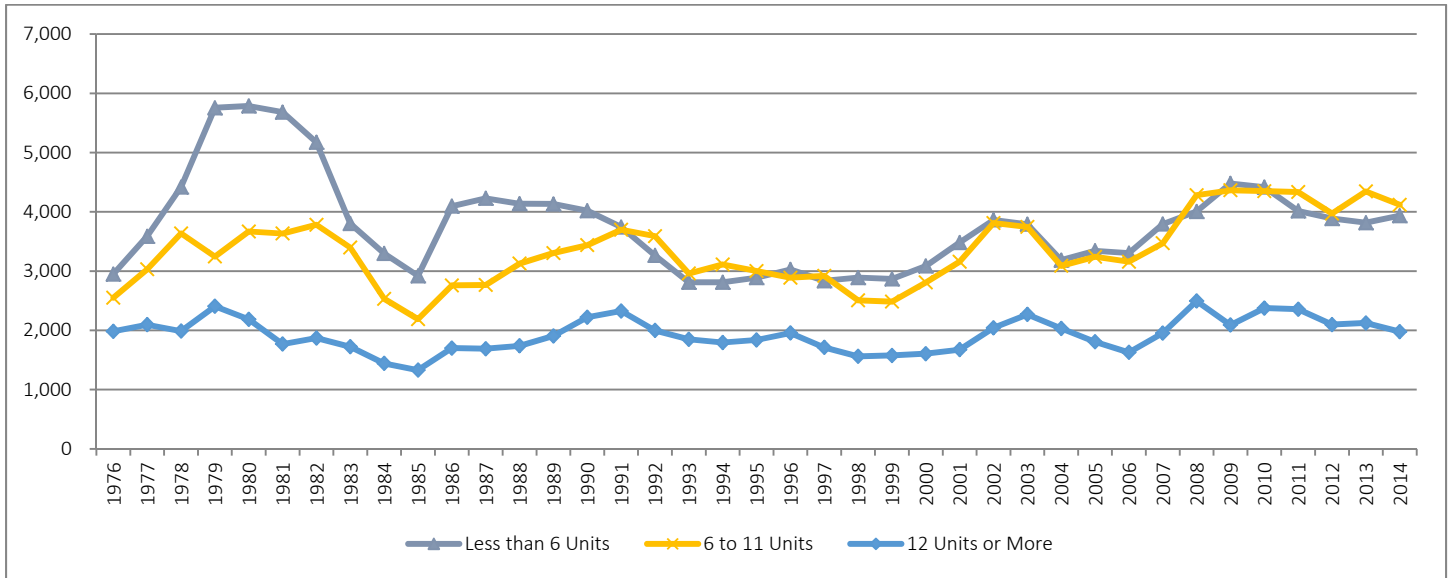
Fall	English		Spanish		Other Language		Total
1992	7,178	81.1%	609	6.9%	1,066	12.00%	8,852
1993	6,115	80.3%	562	7.4%	940	12.30%	7,617
1994	6,211	80.5%	610	7.9%	895	11.60%	7,716
1995	6,289	81.4%	613	7.9%	825	10.70%	7,727
1996	6,394	81.3%	692	8.8%	783	10.00%	7,869
1997	6,017	80.6%	635	8.5%	814	10.90%	7,466
1998	5,552	79.8%	646	9.3%	758	10.90%	6,955
1999	5,436	78.5%	813	11.7%	678	9.80%	6,927
2000	5,957	79.4%	881	11.7%	661	8.80%	7,499
2001	6,425	77.3%	1,156	13.9%	732	8.80%	8,313
2002	7,815	80.4%	938	9.6%	966	9.90%	9,718
2003	7,813	79.7%	907	9.2%	1,084	11.10%	9,804
2004	6,532	78.7%	863	10.4%	910	11.00%	8,305
2005	6,716	80.0%	774	9.2%	900	10.70%	8,390
2006	6,594	81.5%	700	8.6%	794	9.80%	8,088
2007	7,601	82.5%	705	7.7%	910	9.90%	9,216
2008	8,929	82.8%	910	8.4%	941	8.70%	10,780
2009	9,084	84.4%	864	8.0%	820	7.60%	10,768
2010	9,435	86.0%	804	7.3%	732	6.70%	10,971
2011	9,085	85.6%	743	7.0%	790	7.40%	10,618
2012	8,452	85.4%	687	6.9%	753	7.60%	9,892
2013	8,835	85.9%	728	7.1%	721	7.01%	10,284
2014	8,618	85.9%	776	7.7%	638	6.36%	10,032

Note: Totals exclude unknowns. The question about Primary Language was added to the application for Admission in Fall 1992.
Source: The Los Angeles Community College District Office Student Information System (SIS).



Demographic Trends

Unit Load Student Enrollment Distribution

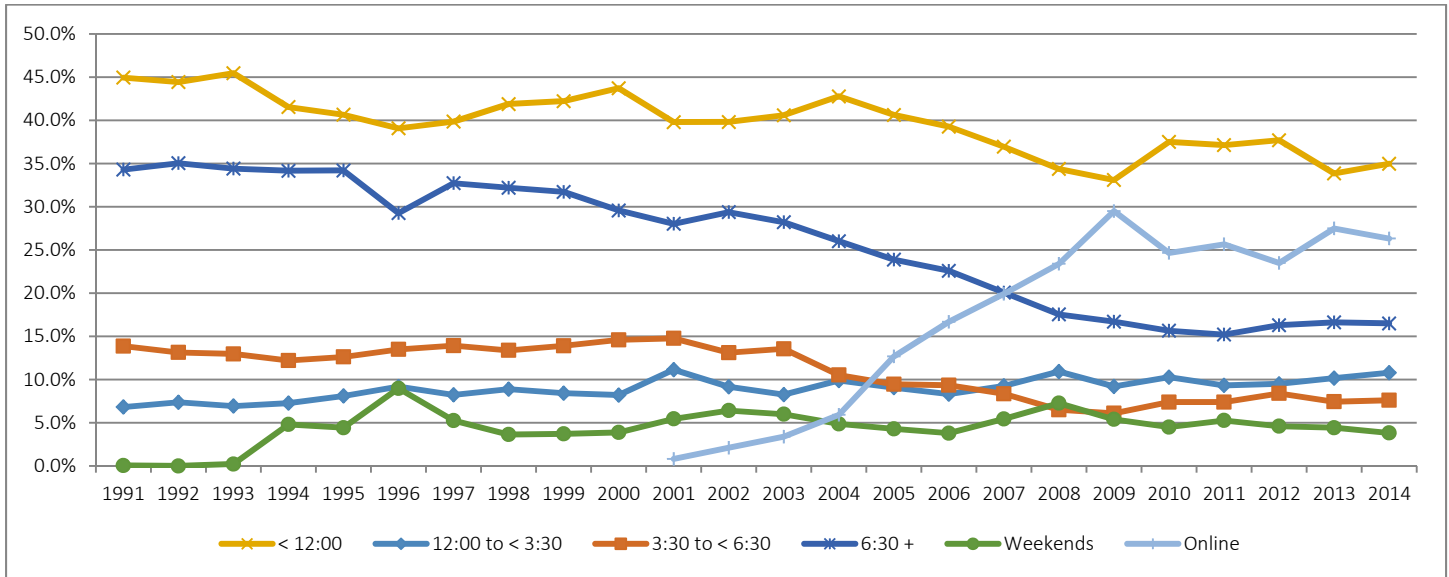


Fall	Less than 6 Units		6 to 11 Units		12 Units or More		Total
1980	5,786	49.7%	3,668	31.5%	2,185	18.8%	11,640
1985	2,920	45.4%	2,188	34.0%	1,328	20.6%	6,436
1990	4,020	41.5%	3,437	35.5%	2,221	22.9%	9,677
1991	3,744	38.3%	3,698	37.9%	2,326	23.8%	9,768
1992	3,264	36.9%	3,590	40.6%	1,998	22.6%	8,852
1993	2,811	36.9%	2,959	38.8%	1,848	24.3%	7,617
1994	2,811	36.4%	3,112	40.3%	1,794	23.2%	7,716
1995	2,889	37.4%	3,001	38.8%	1,837	23.8%	7,727
1996	3,026	38.5%	2,888	36.7%	1,955	24.8%	7,869
1997	2,836	38.0%	2,918	39.1%	1,711	22.9%	7,466
1998	2,890	41.6%	2,505	36.0%	1,560	22.4%	6,955
1999	2,868	41.4%	2,484	35.9%	1,575	22.7%	6,927
2000	3,086	41.2%	2,808	37.4%	1,605	21.4%	7,499
2001	3,482	41.9%	3,158	38.0%	1,673	20.1%	8,313
2002	3,863	39.8%	3,812	39.2%	2,043	21.0%	9,718
2003	3,790	38.7%	3,745	38.2%	2,268	23.1%	9,804
2004	3,185	38.3%	3,089	37.2%	2,031	24.5%	8,305
2005	3,343	39.8%	3,241	38.6%	1,806	21.5%	8,390
2006	3,304	40.8%	3,157	39.0%	1,627	20.1%	8,088
2007	3,794	41.2%	3,469	37.6%	1,953	21.2%	9,216
2008	4,005	37.2%	4,281	39.7%	2,494	23.1%	10,780
2009	4,480	41.0%	4,363	39.9%	2,089	19.1%	10,932
2010	4,417	39.6%	4,348	39.0%	2,375	21.3%	11,140
2011	4,015	37.5%	4,333	40.5%	2,355	22.0%	10,703
2012	3,887	39.0%	3,971	39.9%	2,096	21.1%	9,954
2013	3,816	37.0%	4,344	42.0%	2,124	21.0%	10,284
2014	3,935	39.0%	4,119	41.0%	1,978	20.0%	10,032

Note: Student course load is the number of units in which a student is enrolled; used for determining full-time/part-time status.

Source: The Los Angeles Community College District Office Student Information System (SIS).

Enrollment Distribution by Time of Day



Fall	<12:00	12:00 to <3:30	3:30 to <6:30	6:30 +	Weekends	Online
1991	45.0%	6.8%	13.9%	34.3%	0.1%	
1992	44.4%	7.4%	13.1%	35.1%	0.0%	
1993	45.5%	6.9%	13.0%	34.4%	0.2%	
1994	41.5%	7.3%	12.2%	34.2%	4.8%	
1995	40.7%	8.1%	12.6%	34.2%	4.4%	
1996	39.1%	9.2%	13.5%	29.3%	9.0%	
1997	39.9%	8.2%	13.9%	32.7%	5.3%	
1998	41.9%	8.9%	13.4%	32.2%	3.6%	
1999	42.2%	8.4%	13.9%	31.7%	3.7%	
2000	43.7%	8.2%	14.6%	29.6%	3.9%	
2001	39.8%	11.2%	14.8%	28.0%	5.4%	0.8%
2002	39.8%	9.2%	13.1%	29.4%	6.4%	2.1%
2003	40.6%	8.3%	13.6%	28.2%	6.0%	3.4%
2004	42.8%	9.9%	10.5%	26.0%	4.9%	5.9%
2005	40.6%	9.1%	9.5%	23.9%	4.3%	12.7%
2006	39.3%	8.3%	9.3%	22.6%	3.8%	16.7%
2007	37.0%	9.3%	8.4%	20.1%	5.4%	19.9%
2008	34.4%	10.9%	6.5%	17.5%	7.3%	23.4%
2009	33.0%	9.2%	6.1%	16.7%	5.4%	29.5%
2010	37.5%	10.3%	7.4%	15.7%	4.5%	24.7%
2011	37.1%	9.3%	7.40%	15.2%	5.30%	25.7%
2012	37.7%	9.5%	8.40%	16.3%	4.60%	23.5%
2013	33.9%	10.2%	7.43%	16.6%	4.43%	27.5%
2014	35.0%	10.8%	7.60%	16.5%	3.82%	26.3%

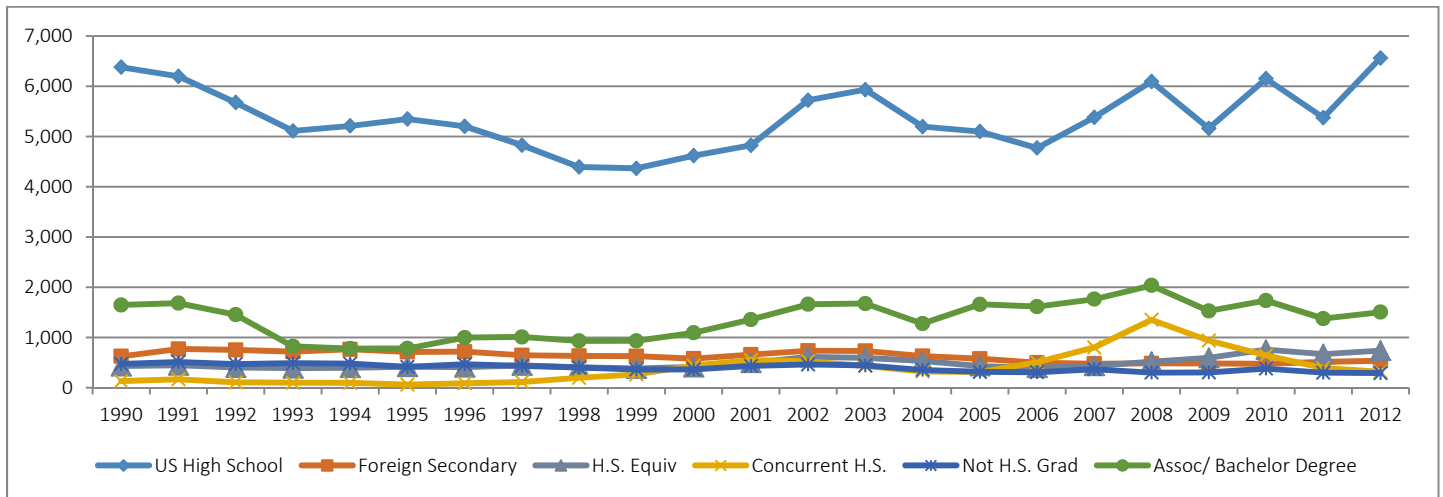
Note: Totals exclude TBAs.

Source: The Los Angeles Community College District Office Student Information System (SIS).



Demographic Trends

Prior Education

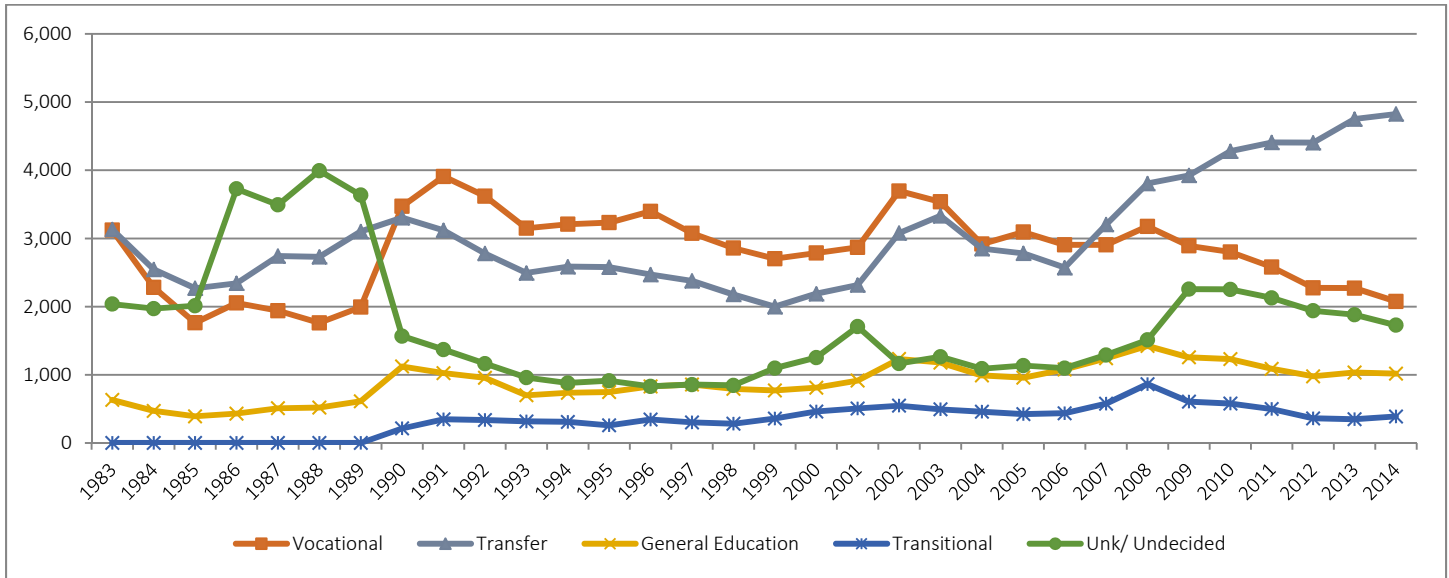


Fall	US High School		Foreign Secondary		H.S. Equiv		Concurrent H.S.		Not H.S. Grad		Assoc/ Bachelor Degree		Total
1990	6,381	65.9%	625	6.5%	428	4.4%	129	1.3%	469	4.8%	1,645	17.0%	9,677
1991	6,197	63.4%	769	7.9%	445	4.6%	166	1.7%	510	5.2%	1,682	17.2%	9,768
1992	5,676	64.1%	750	8.5%	399	4.5%	105	1.2%	469	5.3%	1,453	16.4%	8,852
1993	5,111	67.1%	715	9.4%	388	5.1%	96	1.3%	485	6.4%	822	10.8%	7,617
1994	5,211	67.5%	762	9.9%	395	5.1%	93	1.2%	478	6.2%	777	10.1%	7,716
1995	5,348	69.2%	710	9.2%	416	5.4%	61	0.8%	412	5.3%	781	10.1%	7,727
1996	5,203	66.1%	715	9.1%	406	5.2%	86	1.1%	464	5.9%	995	12.6%	7,869
1997	4,828	64.7%	646	8.6%	440	5.9%	111	1.5%	432	5.8%	1,009	13.5%	7,466
1998	4,394	63.2%	630	9.1%	404	5.8%	196	2.8%	400	5.8%	931	13.4%	6,955
1999	4,366	63.0%	625	9.0%	381	5.5%	263	3.8%	360	5.2%	932	13.5%	6,927
2000	4,619	61.6%	577	7.7%	408	5.4%	440	5.9%	362	4.8%	1,093	14.6%	7,499
2001	4,825	58.0%	657	7.9%	494	5.9%	550	6.6%	433	5.2%	1,355	16.3%	8,313
2002	5,723	58.9%	735	7.6%	615	6.3%	526	5.4%	460	4.7%	1,659	17.1%	9,718
2003	5,933	60.5%	729	7.4%	593	6.0%	434	4.4%	442	4.5%	1,674	17.1%	9,804
2004	5,197	62.6%	629	7.6%	530	6.4%	321	3.9%	353	4.3%	1,274	15.3%	8,305
2005	5,100	60.8%	575	6.9%	430	5.1%	312	3.7%	314	3.7%	1,658	19.8%	8,390
2006	4,772	59.0%	499	6.2%	394	4.9%	504	6.2%	305	3.8%	1,614	20.0%	8,088
2007	5,381	58.4%	475	5.1%	432	4.7%	801	8.7%	366	4.0%	1,761	19.1%	9,216
2008	6,095	56.5%	482	4.5%	518	4.8%	1,351	12.5%	299	2.8%	2,035	18.9%	10,780
2009	5,162	57.3%	481	5.3%	594	6.6%	938	10.4%	302	3.4%	1,528	17.0%	9,005
2010	6,151	60.7%	473	4.7%	756	7.5%	641	6.3%	379	3.7%	1,734	17.1%	10,134
2011	5,375	62.40%	511	5.90%	668	7.80%	391	4.50%	298	3.50%	1,375	16.00%	8,618
2012	6,564	66.00%	535	5.40%	737	7.40%	316	3.20%	288	2.90%	1,503	15.10%	9,943
2013	6,947	67.6%	540	5.3%	781	7.6%	223	2.2%	260	2.5%	1,521	14.8%	10,284
2014	6,827	68.1%	606	6.0%	728	7.3%	235	2.3%	231	2.3%	1,395	13.9%	10,032

Note: Totals exclude unknowns.

Source: The Los Angeles Community College District Office Student Information System (SIS).

Educational Goal



Fall	Vocational		Transfer		General Education		Transitional		Unk/ Undecided		Total
1985	1,763	27.4%	2,269	35.3%	391	6.1%	0	0.0%	2,013	31.3%	6,436
1990	3,471	35.9%	3,303	34.1%	1,122	11.6%	214	2.2%	1,566	16.2%	9,677
1991	3,909	40.0%	3,119	31.9%	1,024	10.5%	347	3.5%	1,369	14.0%	9,768
1992	3,620	40.9%	2,779	31.4%	955	10.8%	335	3.8%	1,163	13.1%	8,852
1993	3,150	41.4%	2,494	32.7%	699	9.2%	316	4.1%	959	12.6%	7,617
1994	3,209	41.6%	2,585	33.5%	736	9.5%	308	4.0%	878	11.4%	7,716
1995	3,232	41.8%	2,579	33.4%	746	9.7%	258	3.3%	912	11.8%	7,727
1996	3,397	43.2%	2,470	31.4%	829	10.5%	344	4.4%	829	10.5%	7,869
1997	3,075	41.2%	2,378	31.8%	857	11.5%	301	4.0%	855	11.5%	7,466
1998	2,859	41.1%	2,178	31.3%	793	11.4%	281	4.0%	843	12.1%	6,955
1999	2,702	39.0%	1,999	28.9%	770	11.1%	358	5.2%	1,097	15.8%	6,927
2000	2,786	37.2%	2,188	29.2%	811	10.8%	461	6.1%	1,253	16.7%	7,499
2001	2,869	34.5%	2,317	27.9%	915	11.0%	506	6.1%	1,706	20.5%	8,313
2002	3,695	38.0%	3,079	31.7%	1,232	12.7%	547	5.6%	1,165	12.0%	9,718
2003	3,537	36.1%	3,332	34.0%	1,179	12.0%	493	5.0%	1,263	12.9%	9,804
2004	2,917	35.1%	2,851	34.3%	990	11.9%	458	5.5%	1,089	13.1%	8,305
2005	3,094	36.9%	2,781	33.2%	957	11.4%	423	5.0%	1,135	13.5%	8,390
2006	2,906	35.9%	2,571	31.8%	1,079	13.3%	435	5.4%	1,097	13.6%	8,088
2007	2,906	31.5%	3,203	34.8%	1,242	13.5%	576	6.2%	1,289	14.0%	9,216
2008	3,177	29.5%	3,805	35.3%	1,423	13.2%	863	8.0%	1,512	14.0%	10,780
2009	2,891	26.4%	3,924	35.9%	1,255	11.5%	606	5.5%	2,256	20.6%	10,932
2010	2,801	25.1%	4,280	38.4%	1,230	11.0%	577	5.2%	2,252	20.2%	11,140
2011	2,581	24.1%	4,408	41.2%	1,088	10.2%	498	4.7%	2,128	19.9%	10,703
2012	2,274	22.8%	4,404	44.2%	977	9.8%	360	3.6%	1,939	19.5%	9,954
2013	2,271	22.1%	4,751	46.2%	1,034	10.1%	347	3.4%	1,881	18.3%	10,284
2014	2,076	20.7%	4,825	48.1%	1,016	10.1%	388	3.9%	1,727	17.2%	10,032

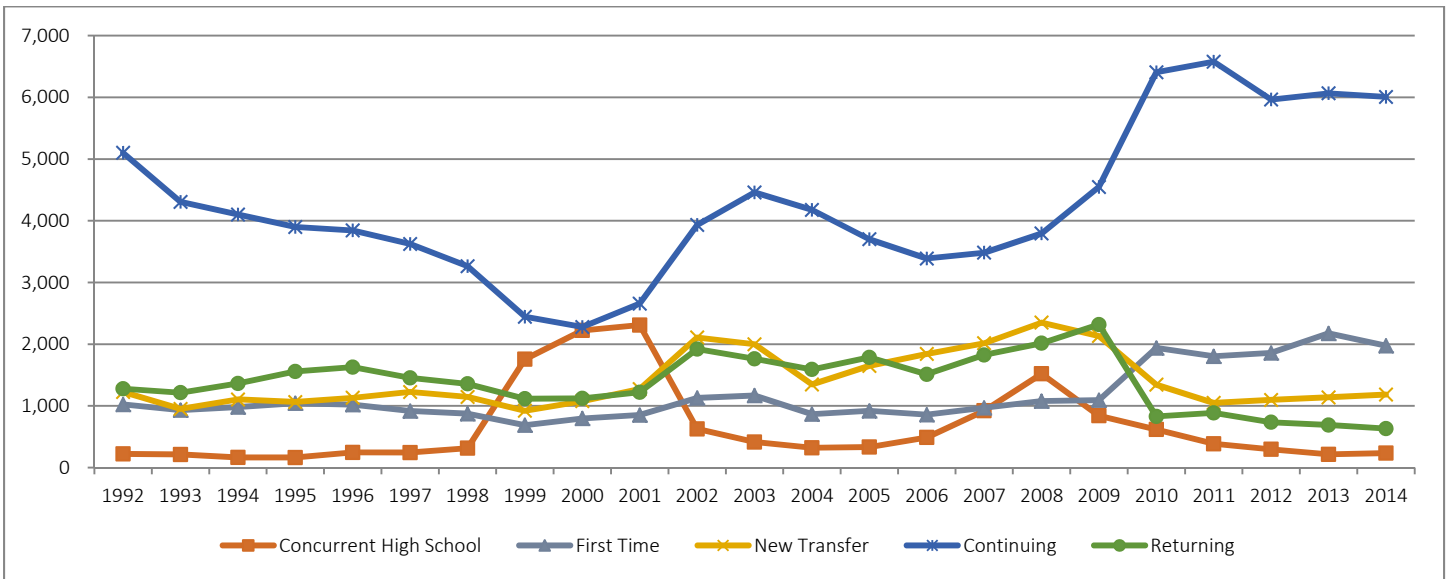
Note: The Major Goal Categories tallied above are inclusive of the following responses to the goal question on the Application for Admission:
Vocational includes: Preparing New Career (Old Category = Job Skills); Advance in Job/Career; Discover Career Goals Maintain License, Vocational Degree without Transfer; and Vocational Certificate without Transfer.
Transfer includes: Transfer with Degree and Transfer without Degree.
General Education includes: Associate Degree without Transfer and Personal Enrichment.
Transitional includes: Improve Basic Skills and Complete High School Diploma..

Source: The Los Angeles Community College District Office Student Information System (SIS).



Demographic Trends

Semester Status Fall 1992 - Fall 2014



Fall	Concurrent High School		First Time		New Transfer		Continuing		Returning		Total
1992	222	2.5%	1,024	11.6%	1,227	13.9%	5,102	57.6%	1,278	14.4%	8,852
1993	213	2.8%	932	12.2%	951	12.5%	4,306	56.5%	1,215	15.9%	7,617
1994	165	2.1%	981	12.7%	1,104	14.3%	4,101	53.2%	1,364	17.7%	7,716
1995	164	2.1%	1,043	13.5%	1,063	13.8%	3,899	50.5%	1,558	20.2%	7,727
1996	247	3.1%	1,020	13.0%	1,131	14.4%	3,843	48.8%	1,628	20.7%	7,869
1997	243	3.3%	918	12.3%	1,226	16.4%	3,625	48.5%	1,454	19.5%	7,466
1998	315	4.5%	873	12.6%	1,146	16.5%	3,265	46.9%	1,357	19.5%	6,955
1999	1,757	25.4%	688	9.9%	921	13.3%	2,445	35.3%	1,116	16.1%	6,927
2000	2,223	29.6%	797	10.6%	1,078	14.4%	2,279	30.4%	1,121	15.0%	7,499
2001	2,310	27.8%	853	10.3%	1,272	15.3%	2,657	32.0%	1,221	14.7%	8,313
2002	627	6.4%	1,129	11.6%	2,110	21.7%	3,932	40.5%	1,921	19.8%	9,718
2003	415	4.2%	1,168	11.9%	1,999	20.4%	4,460	45.5%	1,762	18.0%	9,804
2004	321	3.9%	867	10.4%	1,348	16.2%	4,177	50.3%	1,591	19.2%	8,305
2005	334	4.0%	921	11.0%	1,649	19.6%	3,701	44.1%	1,786	21.3%	8,390
2006	489	6.0%	857	10.6%	1,842	22.8%	3,389	41.9%	1,511	18.7%	8,088
2007	922	10.0%	970	10.5%	2,016	21.9%	3,483	37.8%	1,826	19.8%	9,216
2008	1,520	14.1%	1,078	10.0%	2,350	21.8%	3,795	35.2%	2,016	18.7%	10,780
2009	842	7.7%	1,093	10.0%	2,132	19.5%	4,548	41.6%	2,318	21.2%	10,932
2010	618	5.5%	1,939	17.4%	1,344	12.1%	6,406	57.5%	830	7.5%	11,137
2011	386	3.6%	1,804	16.9%	1,049	9.8%	6,577	61.5%	887	8.3%	10,703
2012	297	3.0%	1,859	18.7%	1,096	11.0%	5,965	59.9%	735	7.4%	9,954
2013	215	2.1%	2,175	21.1%	1,138	11.1%	6,065	59.0%	690	6.7%	10,284
2014	235	2.3%	1,975	19.7%	1,183	11.8%	6,007	59.9%	632	6.3%	10,032

Note: Totals exclude unknowns.

Source: The Los Angeles Community College District Office Student Information System (SIS).