



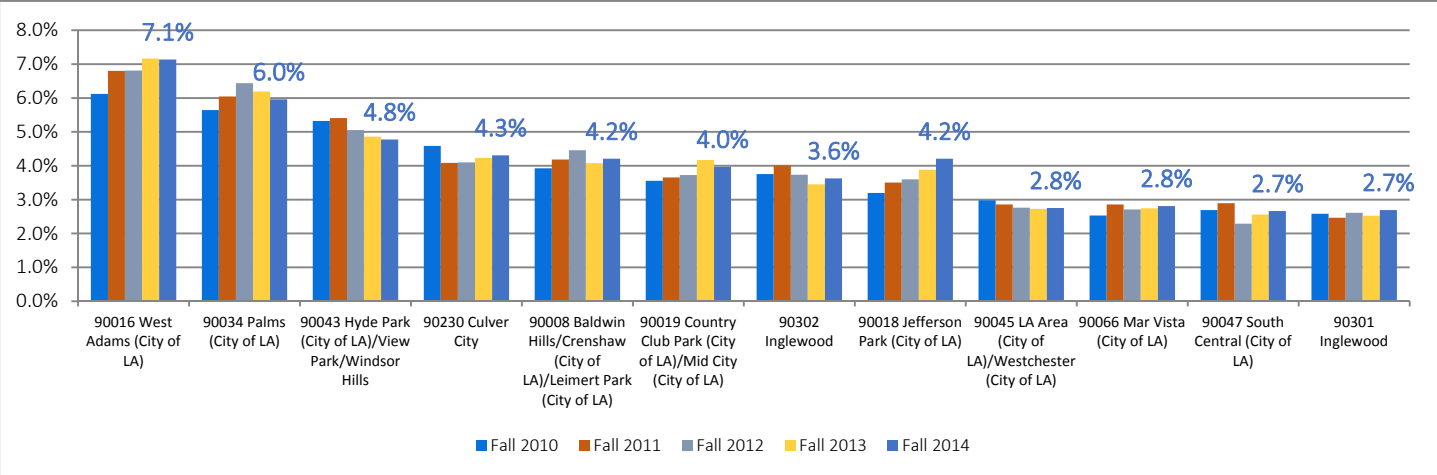
# Student Access

Enrollment Sources and Placement

## Enrollment Sources

### Sources of Students: Zip Code, Fall 2010 to Fall 2014

	Fall 2010		Fall 2011		Fall 2012		Fall 2013		Fall 2014	
	% of All Students		% of All Students		% of All Students		% of All Students		% of All Students Cumulative%	
90016 West Adams (City of LA)	682	6.12%	728	6.80%	678	6.81%	737	7.17%	716	7.14%
90034 Palms (City of LA)	629	5.65%	647	6.05%	641	6.44%	637	6.19%	598	5.96%
90043 Hyde Park (City of LA)/View Park/Windsor Hills	593	5.32%	579	5.41%	503	5.05%	500	4.86%	479	4.77%
90230 Culver City	511	4.59%	437	4.08%	408	4.10%	435	4.23%	432	4.31%
90008 Baldwin Hills/Crenshaw (City of LA)/Leimert Park (City of LA)	437	3.92%	448	4.19%	444	4.46%	419	4.07%	422	4.21%
90019 Country Club Park (City of LA)/Mid City (City of LA)	396	3.55%	391	3.65%	371	3.73%	429	4.17%	398	3.97%
90302 Inglewood	418	3.75%	429	4.01%	372	3.74%	355	3.45%	364	3.63%
90018 Jefferson Park (City of LA)	356	3.20%	375	3.50%	358	3.60%	399	3.88%	422	4.21%
90045 LA Area (City of LA)/Westchester (City of LA)	332	2.98%	306	2.86%	275	2.76%	280	2.72%	276	2.75%
90066 Mar Vista (City of LA)	282	2.53%	306	2.86%	270	2.71%	282	2.74%	282	2.75%
90047 South Central (City of LA)	300	2.69%	310	2.90%	228	2.29%	263	2.56%	267	2.66%
90301 Inglewood	288	2.59%	264	2.47%	260	2.61%	260	2.53%	270	2.69%
90062 South Central (City of LA)	250	2.24%	229	2.14%	216	2.17%	240	2.33%	244	2.43%
90232 Culver City	261	2.34%	219	2.05%	212	2.13%	170	1.65%	184	1.83%
90044 Athens	232	2.08%	213	1.99%	201	2.02%	179	1.74%	188	1.87%
90250 Hawthorne (Holly Park)	216	1.94%	179	1.67%	182	1.83%	168	1.63%	163	1.62%
90037 South Central (City of LA)	171	1.54%	168	1.57%	167	1.68%	179	1.74%	202	2.01%
90035 West Fairfa (City of LA)	137	1.23%	130	1.21%	118	1.19%	149	1.45%	131	1.31%
90056 Ladera Heights (City of LA)	121	1.09%	123	1.15%	114	1.15%	122	1.19%	123	1.23%
90305 Inglewood	136	1.22%	112	1.05%	101	1.01%	98	0.95%	97	0.97%
90025 Sawtelle (City of LA)/West Los Angeles (City of LA)	115	1.03%	120	1.12%	108	1.08%	100	0.97%	100	1.00%
90003 South Central (City of LA)	95	0.85%	109	1.02%	114	1.15%	90	0.88%	89	0.89%
90011 South Central (City of LA)	86	0.77%	87	0.81%	85	0.85%	108	1.05%	116	1.16%
90064 Cheviot Hills (City of LA)/Rancho Park (City of LA)	114	1.02%	81	0.76%	73	0.73%	79	0.77%	93	0.93%
90007 South Central (City of LA)	70	0.63%	69	0.64%	79	0.79%	78	0.76%	87	0.87%
90006 Pico Heights (City of LA)	63	0.57%	63	0.59%	79	0.79%	82	0.80%	79	0.79%
90303 Inglewood	92	0.83%	76	0.71%	67	0.67%	65	0.63%	59	0.59%
90291 Venice (City of LA)	87	0.78%	79	0.74%	69	0.69%	60	0.58%	54	0.54%
90404 Santa Monica	75	0.67%	76	0.71%	74	0.74%	49	0.48%	66	0.66%
90036 Park La Brea (City of LA)	63	0.57%	73	0.68%	64	0.64%	66	0.64%	70	0.70%
90024 Westwood (City of LA) ( y	58	0.52%	60	0.56%	52	0.52%	60	0.58%	53	0.53%
90004 Hancock Park (City of LA)	52	0.47%	53	0.50%	61	0.61%	51	0.50%	52	0.52%
90292 Marina del Rey	54	0.48%	53	0.50%	57	0.57%	54	0.53%	45	0.45%
90304 Lenno	42	0.38%	53	0.50%	50	0.50%	52	0.51%	59	0.59%
90020 Hancock Park (City of LA)	62	0.56%	43	0.40%	44	0.44%	50	0.49%	41	0.41%
90260 Lawndale	56	0.50%	44	0.41%	46	0.46%	50	0.49%	40	0.40%
90405 Santa Monica	50	0.45%	53	0.50%	41	0.41%	43	0.42%	40	0.40%
90049 Bel Air Estates (City of LA)/Brentwood (City of LA)	67	0.60%	52	0.49%	33	0.33%	24	0.23%	40	0.40%
90046 Mount Olympus (City of LA) Page 2 of 10	48	0.43%	40	0.37%	32	0.32%	48	0.47%	45	0.45%
90059 Watts (City of LA)/Willowbrook	47	0.42%	44	0.41%	43	0.43%	37	0.36%	39	0.39%
<b>Subtotal</b>	<b>8,144</b>	<b>73.11%</b>	<b>7,921</b>	<b>74.01%</b>	<b>7,390</b>	<b>74.24%</b>	<b>7,547</b>	<b>73.39%</b>	<b>7,525</b>	<b>75.01%</b>
<b>OTHER ZIP CODES</b>	<b>2,996</b>	<b>26.89%</b>	<b>2,782</b>	<b>25.99%</b>	<b>2,564</b>	<b>25.76%</b>	<b>2,737</b>	<b>26.61%</b>	<b>2,507</b>	<b>24.99%</b>
<b>GRAND TOTAL</b>	<b>11,140</b>	<b>100.00%</b>	<b>10,703</b>	<b>100.00%</b>	<b>9,954</b>	<b>100.00%</b>	<b>10,284</b>	<b>100.00%</b>	<b>10,032</b>	<b>100.00%</b>



Source: Los Angeles Community College District Census Database; West Los Angeles College Student Access Report 2010 and 2012; County of Los Angeles Zip Code List (<http://ceo.lacounty.gov/forms/zipcodes/master%20zip%20codes.pdf>)

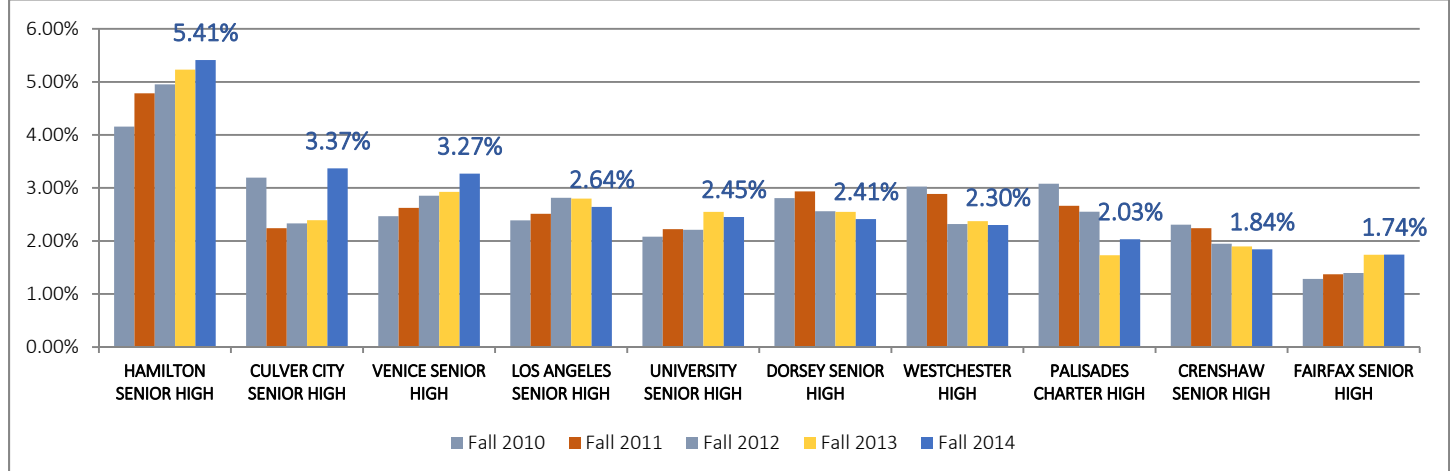
Note: Totals represent headcount of students at Census in the respective term. Zip Codes of student Mailing Addresses sorted by percentage makeup of Fall 2012 Census Headcount; Data is sorted by the top forty zip codes in Fall 2014



## Enrollment Sources

### Sources of Students: High School, Fall 2010 to Fall 2014

	Fall 2010		Fall 2011		Fall 2012		Fall 2013		Fall 2014	
	Headcount	% of All Students	Headcount	% of All Students	Headcount	% of All Students	Headcount	% of All Students	Headcount	% of All Students
HAMILTON SENIOR HIGH (LOS ANGELES)	463	4.16%	512	4.78%	493	4.95%	538	5.23%	543	5.41%
CULVER CITY SENIOR HIGH (CULVER CITY)	356	3.20%	240	2.24%	232	2.33%	246	2.39%	338	3.37%
VENICE SENIOR HIGH (LOS ANGELES)	275	2.47%	281	2.63%	284	2.85%	301	2.93%	328	3.27%
LOS ANGELES SENIOR HIGH (LOS ANGELES)	266	2.39%	269	2.51%	280	2.81%	288	2.80%	265	2.64%
UNIVERSITY SENIOR HIGH (LOS ANGELES)	232	2.08%	238	2.22%	220	2.21%	262	2.55%	246	2.45%
DORSEY SENIOR HIGH (LOS ANGELES)	313	2.81%	314	2.93%	255	2.56%	262	2.55%	242	2.41%
WESTCHESTER HIGH (LOS ANGELES)	337	3.03%	309	2.89%	231	2.32%	244	2.37%	231	2.30%
PALISADES CHARTER HIGH (PACIFIC PALISADES)	343	3.08%	285	2.66%	254	2.55%	178	1.73%	204	2.03%
CRENSHAW SENIOR HIGH (LOS ANGELES)	257	2.31%	240	2.24%	194	1.95%	195	1.90%	185	1.84%
FAIRFAX SENIOR HIGH (LOS ANGELES)	143	1.28%	147	1.37%	139	1.40%	179	1.74%	175	1.74%
MANUAL ARTS SENIOR HIGH (LOS ANGELES)	158	1.42%	168	1.57%	158	1.59%	162	1.58%	158	1.57%
SANTA MONICA HIGH (SANTA MONICA)	201	1.80%	203	1.90%	179	1.80%	171	1.66%	155	1.55%
INGLEWOOD HIGH (INGLEWOOD)	201	1.80%	181	1.69%	163	1.64%	146	1.42%	143	1.43%
PALOS VERDES HIGH (PALOS VERDES E)	213	1.91%	225	2.10%	243	2.44%	231	2.25%	132	1.32%
BEVERLY HILLS HIGH (BEVERLY HILLS)	99	0.89%	121	1.13%	132	1.33%	113	1.10%	94	0.94%
WASHINGTON SENIOR HIGH (LOS ANGELES)	120	1.08%	108	1.01%	101	1.01%	91	0.88%	69	0.69%
HAWTHORNE HIGH (HAWTHORNE)	68	0.61%	73	0.68%	70	0.70%	75	0.73%	68	0.68%
MORNINGSIDE HIGH SCHOOL (INGLEWOOD)	69	0.62%	58	0.54%	52	0.52%	52	0.51%	62	0.62%
HOLLYWOOD SENIOR HIGH (LOS ANGELES)	54	0.48%	59	0.55%	54	0.54%	47	0.46%	56	0.56%
EL SEGUNDO SENIOR HIGH (EL SEGUNDO)	36	0.32%	34	0.32%	31	0.31%	39	0.38%	51	0.51%
GARDENA SENIOR HIGH (GARDENA)	62	0.56%	61	0.57%	51	0.51%	63	0.61%	46	0.46%
L.A. CENTER FOR ENRICHED STUDIES (LOS ANGELES)	34	0.31%	30	0.28%	36	0.36%	35	0.34%	46	0.46%
FREMONT SENIOR HIGH (LOS ANGELES)	44	0.39%	60	0.56%	46	0.46%	44	0.43%	44	0.44%
LEUZINGER HIGH (LAWNDALE)	71	0.64%	56	0.52%	50	0.50%	40	0.39%	41	0.41%
LOCKE SENIOR HIGH (LOS ANGELES)	52	0.47%	42	0.39%	43	0.43%	40	0.39%	39	0.39%
JEFFERSON SENIOR HIGH (LOS ANGELES)	50	0.45%	46	0.43%	45	0.45%	34	0.33%	39	0.39%
EL CAMINO REAL SENIOR HIGH (WOODLAND HILLS)	35	0.31%	39	0.36%	34	0.34%	24	0.23%	38	0.38%
LOS ANGELES UNIFIED ALTERNATIVE EDU (LOS ANGELES)	31	0.28%	28	0.26%	25	0.25%	41	0.40%	36	0.36%
KING/DREW MEDICAL MAGNET HIGH (LOS ANGELES)	31	0.28%	34	0.32%	35	0.35%	33	0.32%	34	0.34%
MARSHALL SENIOR HIGH (LOS ANGELES)	40	0.36%	23	0.21%	22	0.22%	31	0.30%	34	0.34%
WEST ADAMS PREPARATORY HIGH (LOS ANGELES)							10	0.10%	34	0.34%
ST. MARY'S ACAD.-CATH. (INGLEWOOD)	47	0.42%	39	0.36%	39	0.39%	42	0.41%	32	0.32%
BIRMINGHAM SENIOR HIGH (VAN NUYS)	40	0.36%	33	0.31%	24	0.24%	33	0.32%	32	0.32%
BELMONT SENIOR HIGH (LOS ANGELES)	43	0.39%	37	0.35%	35	0.35%	41	0.40%	31	0.31%
ST. BERNARD HIGH-CATH. (PLAYA DEL REY)	70	0.63%	66	0.62%	53	0.53%	47	0.46%	31	0.31%
GRANADA HILLS HIGH (GRANADA HILLS)	30	0.27%	40	0.37%	26	0.26%	33	0.32%	30	0.30%
TAFT SENIOR HIGH (WOODLAND HILLS)	40	0.36%	34	0.32%	26	0.26%	36	0.35%	30	0.30%
BISHOP CONATY MEMORIAL HI-CATH (LOS ANGELES)	35	0.31%	39	0.36%	30	0.30%	32	0.31%	29	0.29%
FOSHAY LEARNING CENTER (LOS ANGELES)	23	0.21%	23	0.21%	30	0.30%	28	0.27%	29	0.29%
ST. MONICA HIGH-CATH. (SANTA MONICA)	37	0.33%	44	0.41%	45	0.45%	41	0.40%	27	0.27%
<b>Subtotal</b>	<b>5,019</b>	<b>45.05%</b>	<b>4,839</b>	<b>45.21%</b>	<b>4,460</b>	<b>44.81%</b>	<b>4,548</b>	<b>44.22%</b>	<b>4,447</b>	<b>44.33%</b>
OTHER CALIFORNIA HIGH SCHOOLS	4,127	37.05%	4,008	37.45%	3,771	37.88%	4,025	39.14%	3,884	38.72%
Other Country / Other State / Unknown	1,994	17.90%	1,856	17.34%	1,723	17.31%	1,710	16.63%	1,701	16.96%
<b>GRAND TOTAL</b>	<b>11,140</b>	<b>100.00%</b>	<b>10,703</b>	<b>100.00%</b>	<b>9,954</b>	<b>100.00%</b>	<b>10,284</b>	<b>100.00%</b>	<b>10,032</b>	<b>100.00%</b>



Source: Los Angeles Community College District Census Database

Note: Totals represent headcount of students at Census in the respective term. Data is sorted by the top forty high schools in Fall 2014

Enrollment Sources

2013 API Growth Report: Feeder Public High Schools

School	Number of Students at West, Fall 2014	3-year Weighted Average API (2011, 2012, 2013)	2013 API (Growth)	Statewide Rank (2013 Growth)	Similar Schools Rank (2013 Growth)	Participants in Free or Reduced Lunch	English Learner	Participated in Gifted and Talented Education Program	Parental Educational Level				
									Did Not Complete HS	HS Graduate	Some College	College Graduate	Graduate School
HAMILTON SENIOR HIGH (LOS ANGELES)	543	731	742	5	7	57	8	27	23	27	21	18	12
CULVER CITY SENIOR HIGH (CULVER CITY)	338	821	832	9	9	42	5	14	7	13	28	29	22
VENICE SENIOR HIGH (LOS ANGELES)	328	721	741	5	8	60	13	21	38	29	15	11	7
LOS ANGELES SENIOR HIGH (LOS ANGELES)	265	642	644	1	4	69	25	9	47	32	11	8	3
UNIVERSITY SENIOR HIGH (LOS ANGELES)	246	737	747	5	8	78	9	20	24	28	23	18	7
DORSEY SENIOR HIGH (LOS ANGELES)	242	609	611	1	4	63	16	5	32	39	20	7	2
WESTCHESTER HIGH (LOS ANGELES)	231	689	704	3	8	47	2	14	10	25	33	25	8
PALISADES CHARTER HIGH (PACIFIC PALISADES)	204	845	861	9	9	34	3	39	6	10	18	35	31
CRENSHAW SENIOR HIGH (LOS ANGELES)	185	557	550	1	2	61	8	6	31	34	24	8	4
FAIRFAX SENIOR HIGH (LOS ANGELES)	175	744	762	6	8	75	12	21	27	25	20	22	6
MANUAL ARTS SENIOR HIGH (LOS ANGELES)	158	592	627	1	5	76	30	6	51	30	12	5	2
SANTA MONICA HIGH (SANTA MONICA)	155	816	823	8	6	35	6	0	7	11	20	31	32
INGLEWOOD HIGH (INGLEWOOD)	143	612	600	1	3	88	18	5	29	40	20	8	3
PALOS VERDES HIGH (PALOS VERDES E)	132	893	884	10	5	3	2	13	0	2	11	41	46
BEVERLY HILLS HIGH (BEVERLY HILLS)	94	868	865	9	7	7	5	11	1	6	15	42	36
WASHINGTON SENIOR HIGH (LOS ANGELES)	69	572	590	1	3	82	17	5	35	31	27	5	3
HAWTHORNE HIGH (HAWTHORNE)	68	652	640	1	4	79	20	3	39	33	19	8	1
MORNINGSIDE HIGH SCHOOL (INGLEWOOD)	62	626	621	1	5	89	30	3	37	41	14	6	2
HOLLYWOOD SENIOR HIGH (LOS ANGELES)	56	751	762	6	7	71	13	21	30	29	19	16	6
EL SEGUNDO SENIOR HIGH (EL SEGUNDO)	51	883	880	10	8	10	2	6	1	11	25	34	28
GARDENA SENIOR HIGH (GARDENA)	46	630	641	1	3	68	16	12	39	26	24	7	3
L.A. CENTER FOR ENRICHED STUDIES (LOS ANGELES)	46	900	897	10	7	51	1	60	6	15	19	36	23
FREMONT SENIOR HIGH (LOS ANGELES)	44	587	623	1	4	68	32	6	65	22	10	2	2
LEUZINGER HIGH (LAWNDALE)	41	667	669	2	2	79	20	50	32	33	21	12	2
LOCKE SENIOR HIGH (LOS ANGELES)	39	*	531	1	2	78	21	0	44	33	19	3	0
JEFFERSON SENIOR HIGH (LOS ANGELES)	39	573	601	1	3	100	35	6	67	22	8	2	1
EL CAMINO REAL SENIOR HIGH (WOODLAND HILLS)	38	823	834	9	7	20	3	30	6	21	25	32	16
KING/DREW MEDICAL MAGNET HIGH (LOS ANGELES)	34	784	798	7	10	84	2	18	35	25	23	12	5
MARSHALL SENIOR HIGH (LOS ANGELES)	34	728	758	5	4	67	14	30	28	29	18	19	6
WEST ADAMS PREPARATORY HIGH (LOS ANGELES)	34	637	647	1	6	100	30	7	61	26	10	2	1
BIRMINGHAM SENIOR HIGH (VAN NUYS)	32	718	734	4	8	86	14	9	37	27	20	13	3
BELMONT SENIOR HIGH (LOS ANGELES)	31	653	671	2	7	100	31	9	59	27	9	4	1
GRANADA HILLS HIGH (GRANADA HILLS)	30	880	885	10	7	41	3	43	5	11	26	37	21
TAFT SENIOR HIGH (WOODLAND HILLS)	30	773	786	7	6	60	8	35	13	23	23	28	14
FOSHAY LEARNING CENTER (LOS ANGELES)	29	705	719	2	2	100	16	17	45	34	15	5	1

**About The Academic Performance Index (API)**

The Academic Performance Index (API) is the cornerstone of California's *Public Schools Accountability Act of 1999 (PSAA)*. The purpose of the API is to measure the academic performance and growth of schools. It is a numeric index (or scale) that ranges from a low of 200 to a high of 1000. A school's score on the API is an indicator of a school's performance level.

**API (Base)** – The API score summarizes the results of various indicators (i.e., statewide tests used in calculating the API).

**Statewide and Similar Schools Ranks** – API decile ranks are listed on the Base API reports. Schools are ranked in ten categories of equal size, called deciles, from one (lowest) to ten (highest). There are two types of API ranks: statewide rank and similar schools rank. The statewide rank compares a school to other schools of the same type statewide. The similar schools rank compares a school to 100 other schools of the same type and similar demographic characteristics. To calculate the statewide ranks, schools' API scores are first sorted separately within school type: elementary, middle, and high schools. For each of the three categories, schools' API scores are organized from lowest to highest statewide. This list of school APIs is divided into ten groups of equal size and numbered from one (lowest) to ten (highest). A school's rank is the decile where that school's API occurs compared to other schools statewide.

**Graduation Rate** – The graduation rate calculation corresponds to the National Center for Educational Statistics (NCES) four-year completion rate. This rate includes information on high school graduates and high school dropouts aggregated over a four-year period.

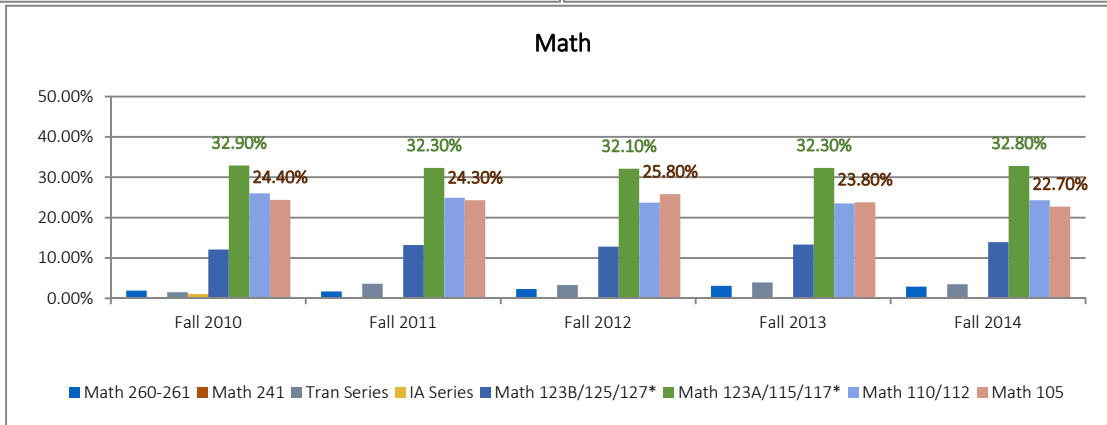
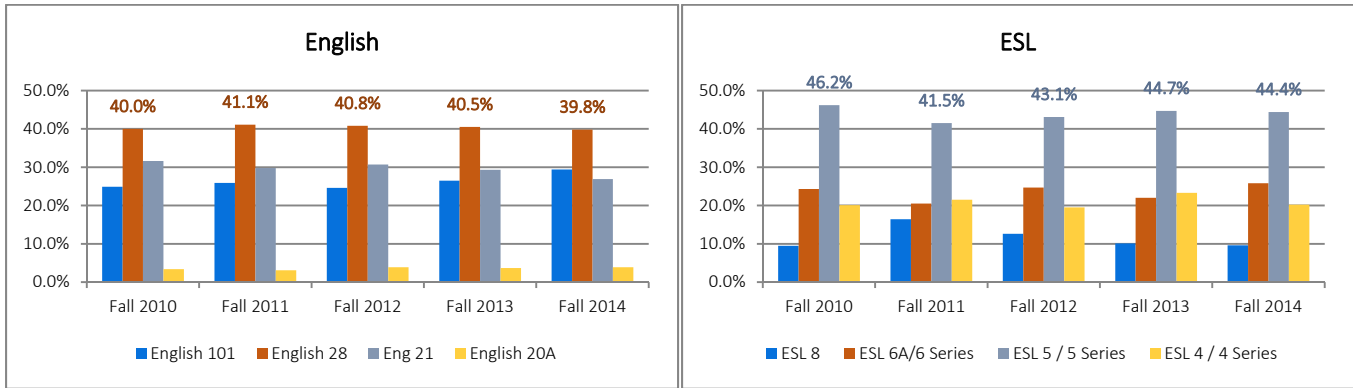
**Source:** California Department of Education: *School Level Reports*: <http://www.cde.ca.gov/ta/ac/ar/> *API Data Files*: <http://www.cde.ca.gov/ta/ac/ap/apidatafiles.asp>; Los Angeles Community College District Census Database

**Note:** Some data combined where appropriate. Data for schools for which 2013 API Growth scores were unavailable are not presented.



# Placement

## Assessment and Placement Summary, 2010 to 2014



Course Level	Recommended Placement	Fall 2010		Fall 2011		Fall 2012		Fall 2013		Fall 2014	
		#	%	#	%	#	%	#	%	#	%
College Level	English 101	644	24.9%	652	25.9%	560	24.6%	637	26.5%	720	29.4%
Pre-College Level	English 28	1033	40.0%	1032	41.1%	931	40.8%	972	40.5%	977	39.8%
Basic Skills	Eng 21	816	31.6%	750	29.8%	700	30.7%	704	29.3%	660	26.9%
	English 20A	89	3.4%	79	3.1%	89	3.9%	89	3.7%	96	3.9%
<b>Total</b>		<b>2,582</b>	<b>100.0%</b>	<b>2,513</b>	<b>100.0%</b>	<b>2,280</b>	<b>100.0%</b>	<b>2,402</b>	<b>100.0%</b>	<b>2,453</b>	<b>100.0%</b>

Course Level	Recommended Placement	Fall 2010		Fall 2011		Fall 2012		Fall 2013		Fall 2014	
		#	%	#	%	#	%	#	%	#	%
ESL	ESL 8	16	9.5%	32	16.4%	22	12.6%	16	10.1%	17	9.6%
	ESL 5 / 5 Series	78	46.2%	81	41.5%	75	43.1%	71	44.7%	79	44.4%
	ESL 4 / 4 Series	34	20.1%	42	21.5%	34	19.5%	37	23.3%	36	20.2%
	ESL 3A/3C										
	ESL 6A/6 Series	41	24.3%	40	20.5%	43	24.7%	35	22.0%	46	25.8%
<b>Total</b>		<b>169</b>	<b>100.0%</b>	<b>195</b>	<b>100.0%</b>	<b>174</b>	<b>100.0%</b>	<b>159</b>	<b>100.0%</b>	<b>178</b>	<b>100.0%</b>

Course Level	Recommended Placement	Fall 2010		Fall 2011		Fall 2012		Fall 2013		Fall 2014	
		#	%	#	%	#	%	#	%	#	%
College Level	Math 260-261	53	1.90%	49	1.70%	59	2.30%	85	3.10%	77	2.90%
	Math 241	11	0.40%								
	Tran Series	44	1.50%	100	3.60%	84	3.30%	106	3.90%	94	3.50%
Pre-College Level	IA Series	25	0.90%								
	Math 123B/125/127*	343	12.10%	370	13.20%	328	12.80%	360	13.30%	373	13.90%
	Math 123A/115/117*	935	32.90%	909	32.30%	823	32.10%	873	32.30%	880	32.80%
Basic Skills	Math 110/112	741	26.00%	699	24.90%	607	23.70%	635	23.50%	652	24.30%
	Math 105	693	24.40%	684	24.30%	662	25.80%	643	23.80%	611	22.70%
<b>Total</b>		<b>2,845</b>	<b>100.00%</b>	<b>2,811</b>	<b>100.00%</b>	<b>2,563</b>	<b>100.00%</b>	<b>2,702</b>	<b>100.00%</b>	<b>2,687</b>	<b>100.00%</b>

Source: The Los Angeles Community College District Office Student Information System (SIS).

Note: Year Categories reflect the calendar year of the date the assessment was processed.